



# Variability and Proper Motion of X-Ray Knots in the Jet of Centaurus A

Bradford Snios<sup>1</sup>, Sarka Wykes<sup>1,7</sup>, Paul E. J. Nulsen<sup>1,2</sup>, Ralph P. Kraft<sup>1</sup>, Eileen T. Meyer<sup>3</sup>, Mark Birkinshaw<sup>4</sup>,  
Diana M. Worrall<sup>4</sup>, Martin J. Hardcastle<sup>5</sup>, Elke Roediger<sup>6</sup>, William R. Forman<sup>1</sup>, and Christine Jones<sup>1</sup>

<sup>1</sup>Harvard-Smithsonian Center for Astrophysics, 60 Garden Street, Cambridge, MA 02138, USA

<sup>2</sup>ICRAR, University of Western Australia, 35 Stirling Highway, Crawley, WA 6009, Australia

<sup>3</sup>Department of Physics, University of Maryland Baltimore County, Baltimore, MD 21250, USA

<sup>4</sup>H. H. Wills Physics Laboratory, University of Bristol, Tyndall Avenue, Bristol BS8 1TL, UK

<sup>5</sup>School of Physics, Astronomy and Mathematics, University of Hertfordshire, College Lane, Hatfield, Hertfordshire AL10 9AB, UK

<sup>6</sup>E.A. Milne Centre for Astrophysics, School of Mathematics and Physical Sciences, University of Hull, Hull, HU6 7RX, UK

Received 2018 September 7; revised 2018 December 17; accepted 2018 December 24; published 2019 February 5

## Abstract

We report results from *Chandra* observations analyzed for evidence of variability and proper motion in the X-ray jet of Centaurus A. Using data spanning 15 yr, collective proper motion of  $11.3 \pm 3.3$  mas yr<sup>-1</sup>, or  $0.68 \pm 0.20c$ , is detected for the fainter X-ray knots and other substructure present within the jet. The three brightest knots (AX1A, AX1C, and BX2) are found to be stationary to an upper limit of 0.10c. Brightness variations up to 27% are detected for several X-ray knots in the jet. For the fading knots, BX2 and AX1C, the changes in spectral slope expected to accompany synchrotron cooling are not found, ruling it out and placing upper limits of  $\approx 80$   $\mu$ G for each of their magnetic field strengths. Adiabatic expansion can account for the observed decreases in brightness. Constraints on models for the origin of the knots are established. Jet plasma overrunning an obstacle is favored as the generator of stationary knots, while moving knots are likely produced either by internal differences in jet speed or the late stages of jet interaction with nebular or cloud material.

**Key words:** galaxies: active – galaxies: individual (Centaurus A) – galaxies: jets – X-rays: galaxies

## 1. Introduction

Kiloparsec-scale X-ray jets have been recognized as a hallmark of extragalactic radio sources for several decades (e.g., Feigelson et al. 1981; Harris et al. 1997; Turner et al. 1997; Hardcastle et al. 2001; Worrall et al. 2001). Radiation from lower-power, i.e., Fanaroff–Riley class I (FR I; Fanaroff & Riley 1974), jets is argued to be X-ray synchrotron in nature based on the monotonic decrease in spectral intensity with increasing frequency, high-levels of linear polarization, and the lack of the gamma-ray emission expected if inverse Compton is the dominant emission process (e.g., Hardcastle et al. 2001, 2006; Kraft et al. 2002; Marshall et al. 2002; Worrall et al. 2010; Meyer & Georganopoulos 2014; Gentry et al. 2015; Meyer et al. 2015; Breiding et al. 2017). The radiative lifetime of the X-ray-emitting electrons is only tens of years, assuming there are equipartition magnetic fields, which implies that particle acceleration must be local. This is useful when considering the likely scenario that the properties of extragalactic jet flows are dominated by their interactions with components of small volume-filling fractions (e.g., Alúzar et al. 2012; Wykes et al. 2015).

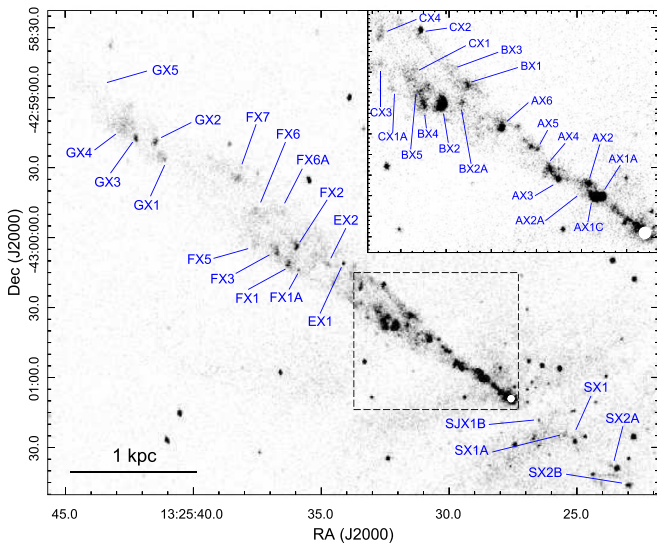
Proper motion studies provide us with a means of directly observing projected jet velocities or, at a minimum, the pattern speed of the jet. However, direct observations of jet motion on kiloparsec scales are scarce, with the optical study by Meyer et al. (2017) providing the largest sample to date. Their work has shown that FR I jets have a slowly increasing jet speed up to a distance of 100 pc from the nucleus, and decelerate on larger scales. There are a few reports of apparent jet acceleration on parsec scales, measured using very long baseline interferometry (VLBI), in other FR I sources (e.g., Cotton et al. 1999; Lister et al. 2013; Nagai et al. 2014;

Hada et al. 2016; Boccardi et al. 2017) and also in Centaurus A (e.g., Müller et al. 2014)—the target of our work. It remains to be determined whether in some sources this genuinely is an increase in speed on small scales, as one could be assessing speed in different jet layers if the jet has a spine-sheath structure. Gradual jet deceleration progressively over 0.1–15 kpc scales has been predicted and is now found in several FR I radio sources (e.g., Bicknell 1994; Laing et al. 1999; Laing & Bridle 2002; Canvin & Laing 2004; Canvin et al. 2005; Meyer et al. 2013; Perucho et al. 2014).

Due to its proximity, at  $3.8 \pm 0.1$  Mpc (Harris et al. 2010) Centaurus A (Cen A) is the only synchrotron jet where the *Chandra* imaging instrument can probe the distance traveled by electrons before synchrotron losses remove them from the X-ray band. Indeed, observations of Cen A have revealed a wealth of detail within the jet, reinforcing its X-ray synchrotron nature and placing constraints on the particle acceleration and the origin of the patchy surface brightness enhancements (knots) in the jet (Figure 1; Kraft et al. 2002; Hardcastle et al. 2003; Kataoka et al. 2006; Goodger et al. 2010). In studying how the X-ray spectra of the knots vary with distance from the jet axis, Worrall et al. (2008) demonstrated that the knots reside at a range of off-axis angles rather than being confined to a shear layer between faster and slower flows. Hardcastle et al. (2001) and Goodger et al. (2010) detected radio proper motion for 3 of the 40 knots identified in the jet. Those moving knots showed comparatively little X-ray emission, indicating that high-energy electron acceleration is less efficient in these structures than at those with zero apparent motion.

While the origin of the radio and X-ray bright knots in Cen A has been investigated in depth by Goodger et al. (2010), no single model for knot formation—including adiabatic compression, impulsive particle acceleration, collisions with stationary objects, and recollimation shocks—adequately explains all the observed features. Recollimation shocks provide a poor

<sup>7</sup> Independent Researcher.



**Figure 1.** 0.9–2.0 keV, exposure-corrected *Chandra* image of the Centaurus A jet and counterjet. ACIS-S observations listed in Table 1 were co-added for the image. Pixel size is  $0''.492$ , and the image has been smoothed with an 8 pixel rms Gaussian filter (inset smoothed with 5 pixel rms Gaussian). Shown are X-ray knot identifications, and the inset (top right) displays the knots of the “inner jet.” The active galactic nucleus (AGN) has been masked in the image.

description of the knots in Cen A, as they do not extend to the full width of the jet (Tingay & Lenc 2009; Goodger et al. 2010). Pure compressions in the synchrotron-emitting plasma have been argued against elsewhere (Hardcastle et al. 2003). Cen A shows a widening region in the jet at  $\sim 260$  pc (projected) near the most upstream and brightest X-ray knots AX1A and AX1C, suggesting that the abrupt increase in jet diameter associated with those knots are shocks at relatively large obstructions in the jet. Goodger et al. (2010) put forward collisions with stationary objects as the most likely scenario for the origin of the majority of the knots in Cen A, and they proposed compressions in the fluid flow that do not result in particle acceleration to X-ray-emitting energies as a feasible explanation for the few moving, radio-only knots. Hardcastle et al. (2003) and Wykes et al. (2015) proposed stars of NGC 5128 with high mass-loss rates as possible obstacles in the jet. Detailed numerical tests of interactions between the jet and winds from stars embedded within it, for 3 Gyr old asymptotic giant branch (AGB) stars at their highest mass-loss rates, will be discussed in a forthcoming paper (S. Wykes et al. 2019, in preparation).

In the present work, we use *Chandra* observations taken over 15 yr to investigate morphological evolution and proper motions of the A, B, and C knot complexes (Figure 1), which are located in the inner  $75''$  (1.38 kpc) of the jet (referred to as the “inner jet” in what follows). The remainder of the paper is structured as follows. In Section 2, we provide the details of the *Chandra* observations and data reduction. Section 3 is devoted to the construction of various maps, with an emphasis on difference maps and statistical uncertainties. Proper motion measurements are pursued in Section 4. Some physical consequences of our results are discussed in Section 5: results for the proper motion are compared with other FR I systems, and brightness changes of the knots are related to the magnetic field strengths and expansion rates to investigate the primary mechanism for fading. Lastly, the results are compared with predictions from various knot formation models.

**Table 1**  
*Chandra* Observations of Centaurus A Used

ObsID	Instrument	Date	$t_{\text{exp}}^a$ (ks)
02978	ACIS-S	2002 Sep 3	44.6
03965	ACIS-S	2003 Sep 14	48.9
10722	ACIS-S	2009 Sep 8	49.5
19521	ACIS-S	2017 Sep 17	14.8
20794	ACIS-S	2017 Sep 19	106.8

**Note.**

<sup>a</sup> Net exposure after background flare removal.

## 2. Data Acquisition and Reduction

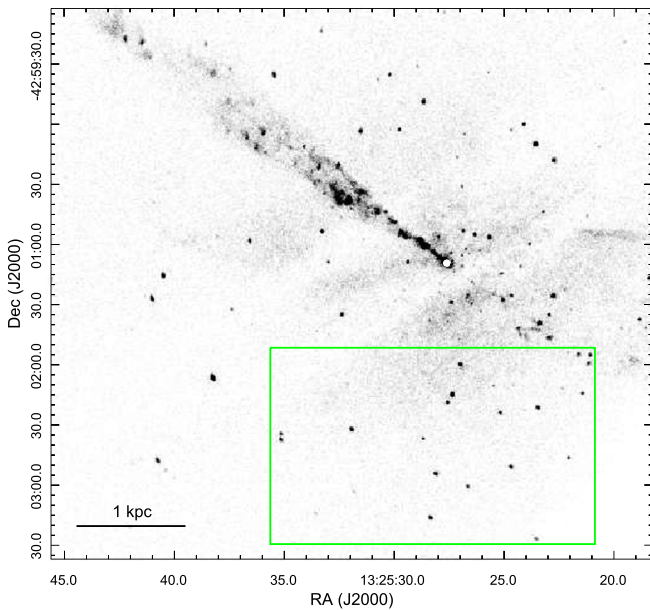
Prior analysis of X-ray emission from Cen A has shown it to be dominated by relatively low-temperature thermal and synchrotron emission that collectively peak at spectral energies below 1.0 keV (Goodger et al. 2010, and references therein). To optimize the count rates, we used *Chandra* observations taken with the S3 chip of the Advanced CCD Imaging Spectrometer (ACIS), as it provides the greatest soft X-ray spectral sensitivity available with the instrument. Utilizing the same instrument for all observations also reduces the systematic uncertainty of any derived quantities from the image set.

Since any proper motion within the jet of Cen A will be small relative to *Chandra*’s resolution, the inner jet must be at the best focus possible to minimize blurring due to the point-spread function (PSF). Cen A was observed with *Chandra* on 2002 September 03 with the inner jet centered on the S3 chip of ACIS in FAINT mode. Subsequent *Chandra* observations that used the same telescope configuration and aimpoint were performed in 2003 and 2009. Observations were also taken in 2017 using the same configuration for the express purpose of studying proper motions against the archival data. Our analysis relies mainly on the 2002/2003 and 2017 observations in order to investigate variability and proper motion over the largest available timespan, using the data with the best available spatial resolution. The 2009 observation was used to better sample variability detected from bright sources (Section 3). In a companion paper (Wykes et al. 2019), these observations are used to determine the pressure profile of the galactic atmosphere in the vicinity of the jet.

A complete list of the observations utilized in the analysis is provided in Table 1. All data were reprocessed using CIAO 4.9 with CALDB 4.7.6 (Fruscione et al. 2006). The CIAO task `deflare` was used with default settings to remove background flares from the observations. The resulting cleaned exposure times are also shown in Table 1. Readout streaks in the images caused by the bright nucleus were removed with `acisreadcorr`. The `readout_bkg` routine was employed to estimate the distribution of “out-of-time” events for each observation.

Contaminant build-up over time on the ACIS optical blocking filter has caused a significant reduction in throughput at photon energies below  $\sim 0.9$  keV.<sup>8</sup> To minimize the impact of this on the response, all images were binned with a lower-energy bound of 0.9 keV. An upper-energy bound of 2.0 keV was used to avoid PSF broadening that occurs at higher energies. The PSF for the selected energy range is well-characterized and

<sup>8</sup> See Section 6.5 of the “Proposers Observatory Guide”, [http://cxc.harvard.edu/proposer/POG/html/chap6.html#tth\\_sEc6.5](http://cxc.harvard.edu/proposer/POG/html/chap6.html#tth_sEc6.5).



**Figure 2.** 0.9–2.0 keV *Chandra* image of the Centaurus A jet and its surroundings. ACIS-S observations listed in Table 1 were co-added for the image. Pixel size is  $0''.492$ , and the image has been smoothed with an 8 pixel rms Gaussian filter. Overlaid is a rectangular region (green) used for the cross-correlation analysis (Section 2). The region was selected to be close to the detector aimpoint. Point sources in the region were used to correct for differences in astrometry between the various observations. The AGN has been masked in the image.

stable over time.<sup>9</sup> The average count rate for the 0.9–2.0 keV band of the 2017 data set was shown to be equivalent to the 2002/2003 count rate after correcting for minor differences in *Chandra*’s sensitivity.

Investigation of proper motion requires the images of Cen A to be co-aligned to high accuracy. Cross-correlation was used to determine and correct any residual astrometric offsets between the observations (Snios et al. 2018). A rectangular region of  $165'' \times 100''$  centered on the field of point sources to the south of Cen A was then defined (see Figure 2). This region was selected to be close to the detector aimpoint in order to minimize the PSF and provide the highest possible accuracy for the image co-alignment. No features intrinsic to the non-thermal jet/counterjet emission of Cen A were included in the region to avoid alignment biasing from potential temporal variations. In total, 24 unique point sources that were present in all observations were detected within the selected region. This provided adequate statistics to ensure accurate alignment of the data sets. The region was also varied by size, position, and orientation numerous times to ensure the resulting offsets were not biased by the region selection. All offsets reported in this work were found to be insensitive to these variations.

An image of the selected region was generated for each ObsID. For this method, ObsID 20794 was selected as a reference image for its high total exposure. A two-dimensional cross-correlation function between ObsID 20794 and each remaining image was generated. A least-squares fit of a two-dimensional Lorentzian was applied to the cross-correlation function to determine the relative offset of each image to the reference. The astrometric shift needed to correct this offset was applied to the data using the CIAO `wcs_update`

routine, requiring a root mean square translation of  $(\Delta x_{\text{rms}}, \Delta y_{\text{rms}}) = (0''.32, 0''.64)$ . Here, the directions of the angular offsets  $(\Delta x, \Delta y)$  correspond to the directions of R.A. and decl., respectively. The goodness of the alignment was tested by comparing positions of the surrounding point sources using the `dmstat` routine; pairs were found to agree within  $0''.01$ . The agreement is significantly more precise than the accuracy of the estimated proper motion (see Section 4).

Generation of accurate exposure map corrections for Cen A is difficult given the significant spectral variations over the system due to the presence of the dust lane near the central AGN. To avoid introducing uncertainties into the final images owing to assumptions of the spectral model, multiple exposure maps were created in 0.1 keV slices using the average effective area of each slice. Exposure maps were generated using a sub-pixel binning of  $0''.123 \text{ pix}^{-1}$  with the `mkexppmap` CIAO command. The exposure-corrected image slices were then co-added to produce a final, exposure-corrected image for each observation. The final images were binned over a 0.9–2.0 keV energy band, and the exposure-corrected images are in units of  $\text{photon cm}^{-2} \text{ s}^{-1}$ . A merged, exposure-corrected image of Cen A, with the knots labeled, is shown in Figure 1. Following Hardcastle et al. (2007), we define a knot as any compact feature in the jet that is distinguished (by a factor  $\gtrsim 2$ ) in surface brightness from its surroundings, and has a radius  $< 2''$ .

### 3. Difference Maps

The reprocessed images described in Section 2 were separated into 2002/2003 and 2017 epochs to probe the longest available timescale for variability and proper motion. ObsIDs 02978 and 03965 were merged with the CIAO routine `merge_obs` to create the 2002/2003 data set, while ObsIDs 19521 and 20794 were merged for the 2017 data set. A difference map of the two epochs was generated using `dmimgcalc`. The final images and difference maps are presented in Figures 3 and 4.

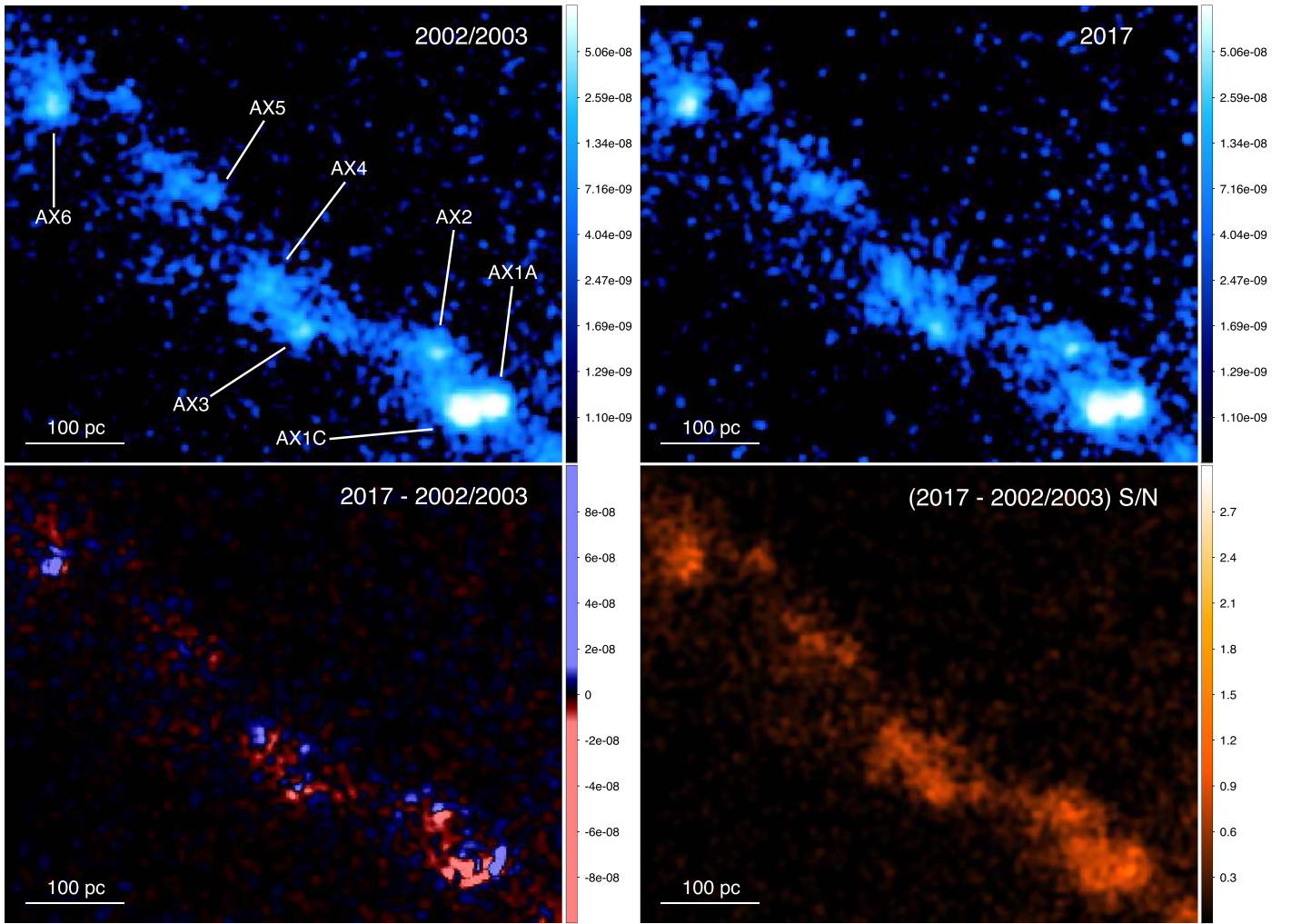
Inspection of those point sources adjacent to the jet of Cen A that remained constant in brightness over time reveals no notable morphological features in the difference maps, reaffirming that the astrometric and exposure corrections are accurate. Variations in brightness and morphology were observed throughout the Knot A, B, and C complexes. Variations in knots located further downstream and the counterjet knots were found to be consistent with the observed background fluctuations and are consequently not shown.

The uncertainty in the difference map must be quantified to determine the significance of any changes in the jet. If the raw counts for a pixel in the two 0.9–2.0 keV exposures are  $N_1$  and  $N_2$  and the corresponding exposure corrections are  $c_1$  and  $c_2$ , then the value in the difference image is  $c_2 N_2 - c_1 N_1$ . We estimate the signal-to-noise ratio (S/N) as

$$S/N = \frac{|c_2 N_2 - c_1 N_1|}{\sqrt{c_1^2 N_1 + c_2^2 N_2}}. \quad (1)$$

S/N maps computed from this method are shown in Figures 3 and 4. Regions were defined surrounding each knot based on the knot definition criteria from Section 2, and integrated S/Ns were subsequently calculated for each of these regions. The

<sup>9</sup> See Section 6.6 of the ‘‘Proposers Observatory Guide’’, [http://cxc.harvard.edu/proposer/POG/html/chap6.html#tth\\_sEc6.6](http://cxc.harvard.edu/proposer/POG/html/chap6.html#tth_sEc6.6).



**Figure 3.** Images at 0.9–2.0 keV (upper panels), difference map (lower left panel), and S/N map (lower right panel) are shown of the Knot A complex in the Centaurus A jet. The images are binned on a scale of  $0''.123 \text{ pix}^{-1}$  and smoothed with a 3 pixel rms Gaussian. The exposure-corrected images are in units of photon  $\text{cm}^{-2} \text{ s}^{-1}$ . In the difference map, the red regions are areas that are brighter in the 2002/2003 data set, while the blue regions are brighter in the 2017 data.

integrated  $\chi^2$  for a region is defined as

$$\sum_i^{N_p} (\text{S/N})_i^2, \quad (2)$$

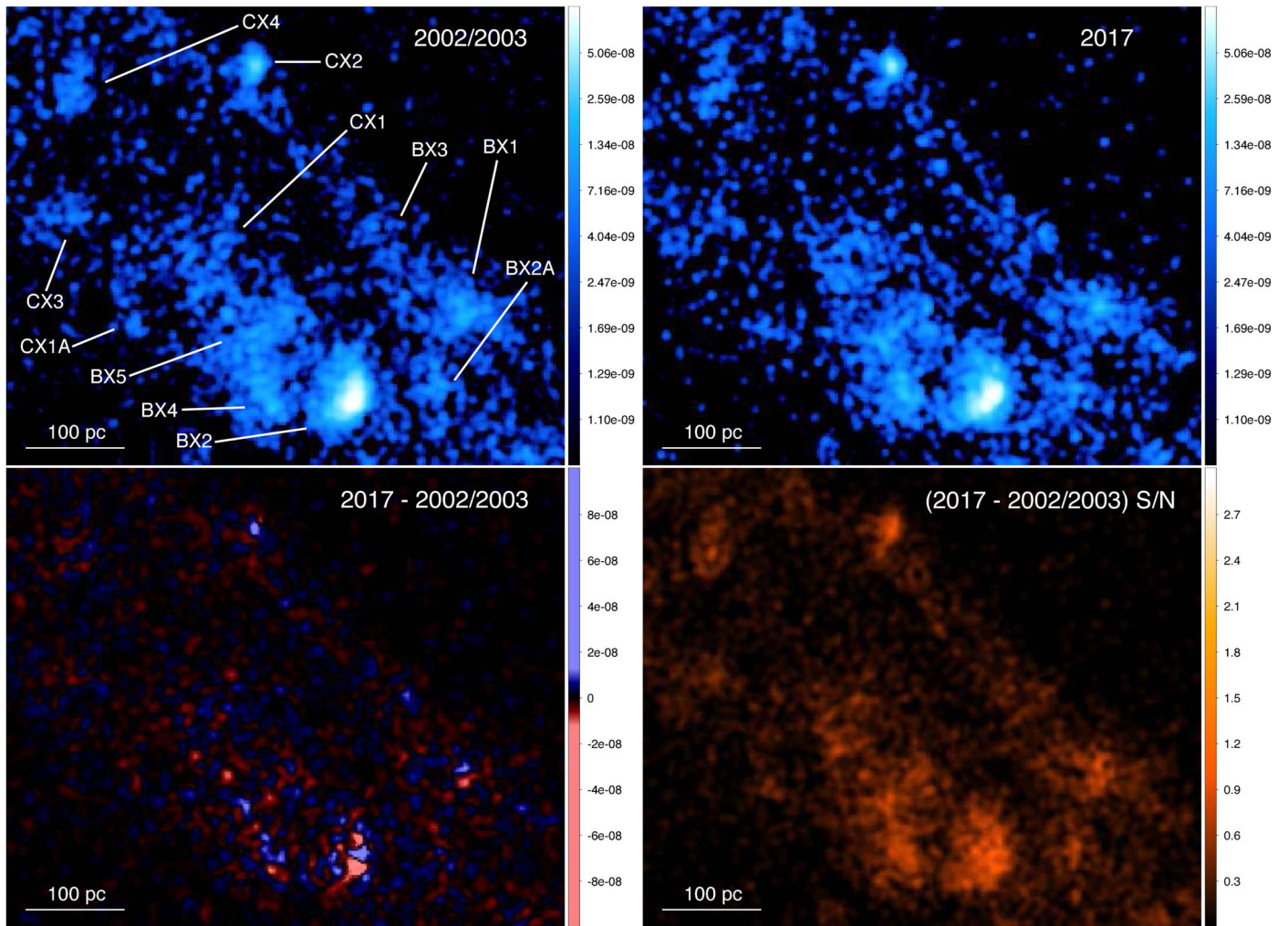
where  $(\text{S/N})_i$  is the S/N of a pixel and  $N_p$  refers to the total number of pixels within the region. Values of  $\chi^2$  and  $N_p$  for each region are shown in Table 2. In the absence of a signal, these values would have a  $\chi^2$  distribution with  $N_p$  degrees of freedom. Knots AX1A, AX1C, and BX2 each have  $\chi^2$  values that are inconsistent with zero difference above the  $3\sigma$  level. The remaining knots all lie below the  $3\sigma$  threshold, while variations throughout the diffuse emission of the jet lie below the  $1\sigma$  threshold.

Based on *Chandra* ACIS-S calibrations, the primary source of systematic error in the difference map is the growing amount of contaminant on the ACIS optical blocking filter. This contaminant layer is known to contribute a maximum systematic count rate error  $<5\%$ .<sup>10</sup> To determine which observed variations exceeded this uncertainty threshold, percentage changes in brightness

were estimated for each area of significant brightness change. Regions were again defined surrounding each knot, and the brightness was estimated for each knot in the 2002/2003, 2009, and 2017 epochs. On-source annular regions were used for background-subtraction to account for the diffuse jet emission. Brightness uncertainties were estimated from Poisson noise. An average brightness change was calculated by taking the difference of the 2017 and 2002/2003 epochs and then dividing the result with the 2002/2003 brightness. This method provides information on the change in brightness relative to the initial epoch. The brightness and average brightness change for each examined knot are provided in Table 2.

Several features in the difference map show significant variations in brightness. Clear variations are observed in the Knot A complex, as shown in Figure 3, with knots AX1A and AX1C demonstrating the most significant brightness and morphological variations. Structures surrounding the AX1 knots also appear to vary in brightness, though this region was found to possess a  $\text{S/N} < 2$  in the difference map after accounting for the variability from the knots. Knots AX2–AX6 appear to exhibit brightness changes, but the low integrated S/N does not allow for a robust quantification. Moving down the jet, the Knot B and Knot C complexes also display

<sup>10</sup> See “ACIS QE Contamination,” <http://cxc.harvard.edu/ciao/why/acisqecontamN0010.html>.



**Figure 4.** Images at 0.9–2.0 keV (upper panels), difference map (lower left panel), and S/N map (lower right panel) are shown of the Knot B and Knot C complexes in the Centaurus A jet. The images are binned on a scale of  $0''.123 \text{ pix}^{-1}$  and smoothed with a 3 pixel rms Gaussian. The exposure-corrected images are in units of  $\text{photon cm}^{-2} \text{ s}^{-1}$ . In the difference map, the red regions are areas that are brighter in the 2002/2003 data set, while the blue regions are brighter in the 2017 data.

variations in the difference images (see Figure 4), albeit at a reduced S/N when compared with the Knot A complex. Knot BX2, which has the second-highest flux density of all the observed knots, shows significant brightness and morphological shifts, while there are no other features in the B and C complexes with sufficient S/N to conclude that they have varied.

#### 4. Proper Motion

Here, we discuss evidence for motion of X-ray knots in the Cen A jet. An object at the distance of Cen A moving at a projected speed  $c$  would have a proper motion of  $\simeq 0''.25$  over a 15 year timespan. Thus, we should expect the resultant changes in the X-ray images to be subtle. In the difference maps (Figures 3 and 4), a knot that has moved outward significantly should show positive residuals at its outer margin and negative residuals at its inner margin. Inspection of the difference maps reveals that the brightest knots (AX1A, AX1C, and BX2) show no convincing evidence of downstream movement along the jet axis. As a further check, the position of each of these knots was determined using the CIAO `dmstat` routine and the results for the two epochs compared. The rms shift in position for the three knots was measured to be  $0''.03$ , which is smaller than our estimate of the uncertainty (derived below). In contrast, potential

evidence of motion is observed for several other knots, like AX2 or AX6, but their low count statistics make it impossible to directly measure the projected speed of any individual knot.

Although none of the fainter knots can be located individually with sufficient precision to detect proper motions, there are indications that several of the fainter X-ray knots have moved downstream along the jet. To look for evidence of collective motion in the jet, we computed the cross-correlation function of images for the 2002/2003 and 2017 epochs. Analogous to the method used to co-align the images (Section 2), we first defined a  $50'' \times 50''$  region of the inner jet, which is shown in Figure 5. All point sources within the field of view, but outside the jet, were masked. Two different regions were selected for this analysis: a region using the entire inner jet, and the same region but with knots AX1A, AX1C, and BX2 masked. These three knots were masked because they appear stationary to high significance and were therefore removed to unveil motions in the remainder of the structure in the jet. Similar to the method outlined in Section 2, the image region was varied by size, centroid position, and orientation numerous times to ensure the resulting offsets were not biased by the region selection. To ensure a comprehensive analysis, all possible alignments of the two images were sampled in the cross-correlation function.

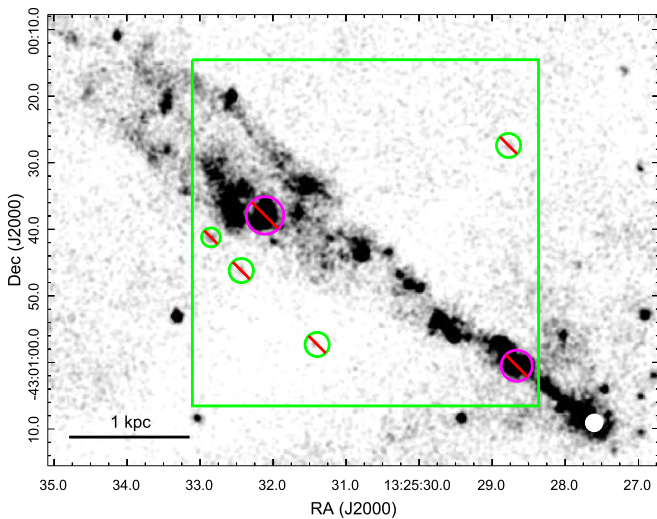
**Table 2**  
Average Change in X-Ray Brightness, On-source Background Subtraction

Knot	Integrated S/N [(S/N) <sup>2</sup> /pixels]	Brightness ( $10^{-6}$ photons $\text{cm}^{-2}$ $\text{s}^{-1}$ )			Average Change in Brightness <sup>a,b</sup>
		2002/2003 Epoch	2009 Epoch	2017 Epoch	
AX1A	187.1/161	$10.2 \pm 0.4$	$12.2 \pm 0.7$	$13.0 \pm 0.5$	$+27 \pm 10\%$
AX1C	168.8/141	$17.5 \pm 0.6$	$15.8 \pm 0.8$	$13.6 \pm 0.5$	$-23 \pm 6\%$
AX2	108.4/123	$2.7 \pm 0.2$	$2.9 \pm 0.3$	$2.2 \pm 0.2$	$-20 \pm 17\%$
AX3	119.4/140	$2.8 \pm 0.2$	$2.5 \pm 0.3$	$2.2 \pm 0.2$	$-22 \pm 17\%$
AX4	183.7/264	$3.0 \pm 0.2$	$3.5 \pm 0.4$	$2.9 \pm 0.2$	$-6 \pm 19\%$
AX5	120.0/267	$1.8 \pm 0.2$	$2.3 \pm 0.3$	$1.7 \pm 0.2$	$-14 \pm 26\%$
AX6	197.5/234	$4.5 \pm 0.3$	$4.2 \pm 0.4$	$5.7 \pm 0.3$	$+27 \pm 15\%$
BX1	161.4/271	$2.2 \pm 0.2$	$2.1 \pm 0.3$	$2.3 \pm 0.2$	$+4 \pm 24\%$
BX2A	78.5/192	$1.0 \pm 0.1$	$1.4 \pm 0.2$	$1.0 \pm 0.1$	$-9 \pm 38\%$
BX2	281.0/267	$15.2 \pm 0.5$	$14.1 \pm 0.7$	$13.0 \pm 0.5$	$-15 \pm 7\%$
BX4	149.7/222	$2.3 \pm 0.2$	$2.7 \pm 0.3$	$2.6 \pm 0.2$	$+15 \pm 23\%$
BX5	363.1/778	$4.9 \pm 0.3$	$4.9 \pm 0.4$	$4.6 \pm 0.3$	$-14 \pm 18\%$
CX1	256.3/800	$2.7 \pm 0.2$	$3.6 \pm 0.4$	$3.0 \pm 0.2$	$+8 \pm 33\%$
CX2	72.9/78	$1.7 \pm 0.2$	$2.2 \pm 0.3$	$2.1 \pm 0.2$	$+21 \pm 24\%$

**Notes.**

<sup>a</sup> Defined as  $(B_{2017} - B_{2002/2003}) / B_{2002/2003}$ , where  $B$  is brightness.

<sup>b</sup> Positive values indicate an increase in brightness toward the current epoch; negative values indicate a decrease in brightness.



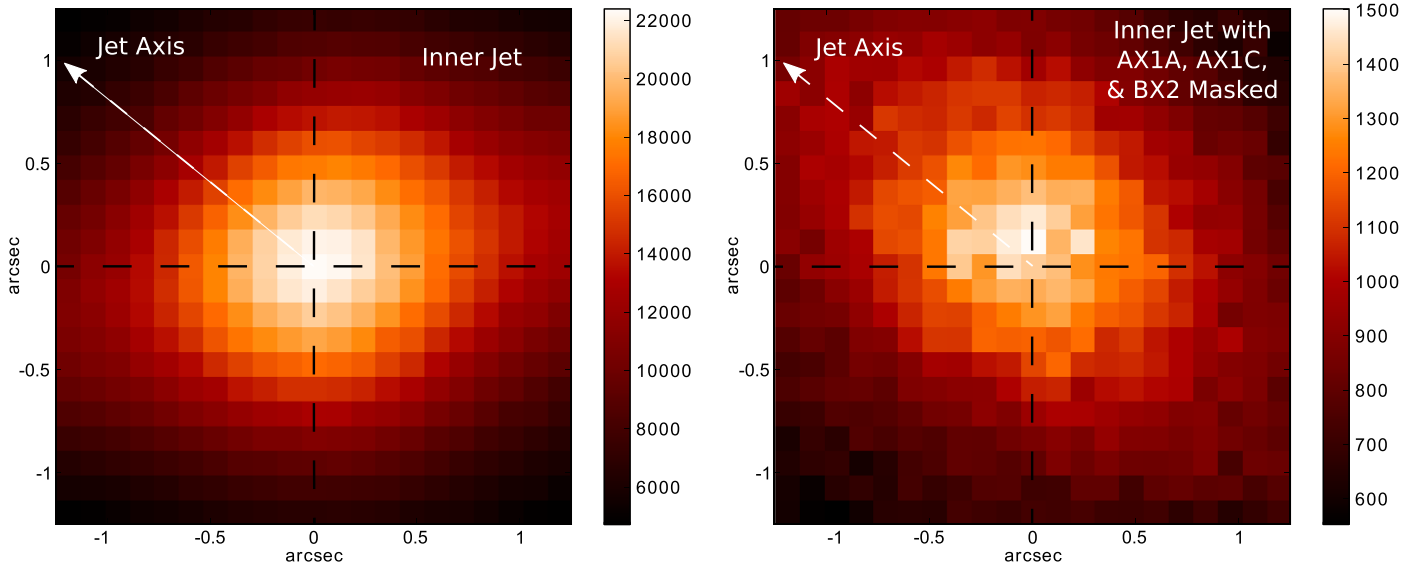
**Figure 5.** 0.9–2.0 keV *Chandra* image of the Centaurus A inner jet. The ACIS-S observations listed in Table 1 were co-added for the image. Pixel size is  $0''.492$ , and the image has been smoothed with an 8 pixel rms Gaussian filter. Overlaid is a  $50'' \times 50''$  region (green square) used for the cross-correlation analysis of the jet (Section 4). Adjacent point sources were masked for both the first and second cross-correlation fits (green circles), while a second fit also has knots AX1A, AX1C, and BX2 masked (magenta circles).

With the three brightest knots included, the absolute maximum of the resulting cross-correlation function was found to be 20 times greater in amplitude than the background noise. A zoomed-in region of the cross-correlation function absolute maximum is shown in Figure 6, left panel. All remaining local maxima detected in the cross-correlation function had an amplitude  $<5\%$  of the absolute maximum and were found to be coincident with background fluctuations. In fitting the peak with a two-dimensional Lorentzian profile, the image offset was found to be  $(\Delta x, \Delta y) = (0''.026, 0''.033)$ , consistent with these knots being stationary (see error discussion below). The directions of the angular offsets  $(\Delta x, \Delta y)$  correspond to the directions of R.A. and decl., respectively.

Repeating the cross-correlation analysis with the three brightest knots excluded shows an order of magnitude reduction in the cross-correlation absolute maximum amplitude (Figure 6, right panel). This difference is expected given that the amplitude is directly dependent on the total counts and alignment of the images, and the three brightest knots are tightly localized sources within the jet that contribute 58% of the total knot emission. The three knots therefore dominated the previous cross-correlation fit, and removal of them will allow us to probe for proper motion of the fainter knots and diffuse X-ray emission in the jet.

By masking the three brightest knots, the absolute maximum of the second cross-correlation function was observed to be 6 times greater than the background. The remaining local maxima detected had an amplitude  $<20\%$  of the absolute maximum and were consistent with noise. The peak shown in Figure 6 (right panel) is therefore the most statistically significant feature found from the cross-correlation function. Fitting the peak with a two-dimensional Lorentzian profile, an offset for the remainder of the inner jet was found to be  $(\Delta x, \Delta y) = (-0''.166, 0''.046)$ , for a total shift of  $0''.17$ . It is noteworthy that there is no peak at zero offset in the right panel of Figure 6, implying that the greater part of the remaining substructure is moving at comparable speeds. The direction of the measured offset is at  $75^\circ$  east of north projected on the sky. For the error estimate below, this is slightly more than  $1\sigma$  away from the direction of the jet, at  $55^\circ$  east of north projected on the sky. We therefore found that the fainter knots, and possibly other faint substructure in the jet, have moved along the jet in the flow direction.

The primary source of statistical error inherent to the proper motion estimate is the uncertainty in the cross-correlation fit. To quantify this uncertainty would require an accurate model of the X-ray image of the jet of Cen A. However, any model will introduce a significant source of systematic uncertainty that is difficult to assess and is therefore not advised for use when analyzing complex systems (Peterson et al. 1998). We instead opted to study the uncertainty by splitting the exposure time for each of the three available data sets (2002/2003, 2009, 2017)



**Figure 6.** Plots of the cross-correlation functions from Section 4, zoomed in on the absolute maxima. The pixel size corresponds to  $0''.123 \text{ pix}^{-1}$ . The first fit masked adjacent point sources to the jet (left), while the second fit also masked knots AX1A, AX1C, and BX2 (right). Masking the three bright knots reveals a shift along the jet axis.

in half and cross-correlating each data set half with its complementary half. Since the complementary halves are essentially coeval, the observed shifts should be zero, apart from the statistical uncertainty of this method. While this approach only provides three test samples and data sets of half the length used for the actual measurement, the statistical properties of the test samples are mostly well-matched to the actual measurement and the method avoids the risk of introducing new systematic uncertainties. From this analysis, the rms shift of the three data sets was  $0''.05$ , with each data set randomly distributed about the zero-point. As this uncertainty analysis halves the total available exposure, it increases the statistical uncertainty and gives a value higher than the uncertainty from the proper motion calculation. The value of  $0''.05$  should therefore be viewed as an upper limit on the statistical uncertainty for the proper motion estimate.

An additional source of uncertainty in the result is from the 1 year spread in observations used for the 2002/2003 data set. To estimate this error, the 2002/2003 data set was first split into its two, separate observations. Each observation was then cross-correlated with the 2017 data set using the same regions from which the proper motion was estimated. A resulting 5% spread in the previously reported proper motion shift was observed, which is small compared to the  $\sim 30\%$  uncertainty from the cross-correlation fit. We therefore considered this systematic uncertainty to be negligible relative to other sources of error.

The validity of the proper motion estimate was further examined by generating a synthetic difference map to compare with the observed map. A simulated observation was created by shifting the 2002/2003 image by  $0''.17$  along the jet. A difference map of the simulated and actual observations was generated and then compared to the observed difference map (Figure 7). Direct estimation of proper motion for the minor knots through use of either the observed or synthetic difference map would require each knot to have higher count statistics than is available in our epochs, hence the cross-correlation method was preferred. Nonetheless, a qualitative comparison between the observed and synthetic difference maps may confirm the general features expected for our proper motion

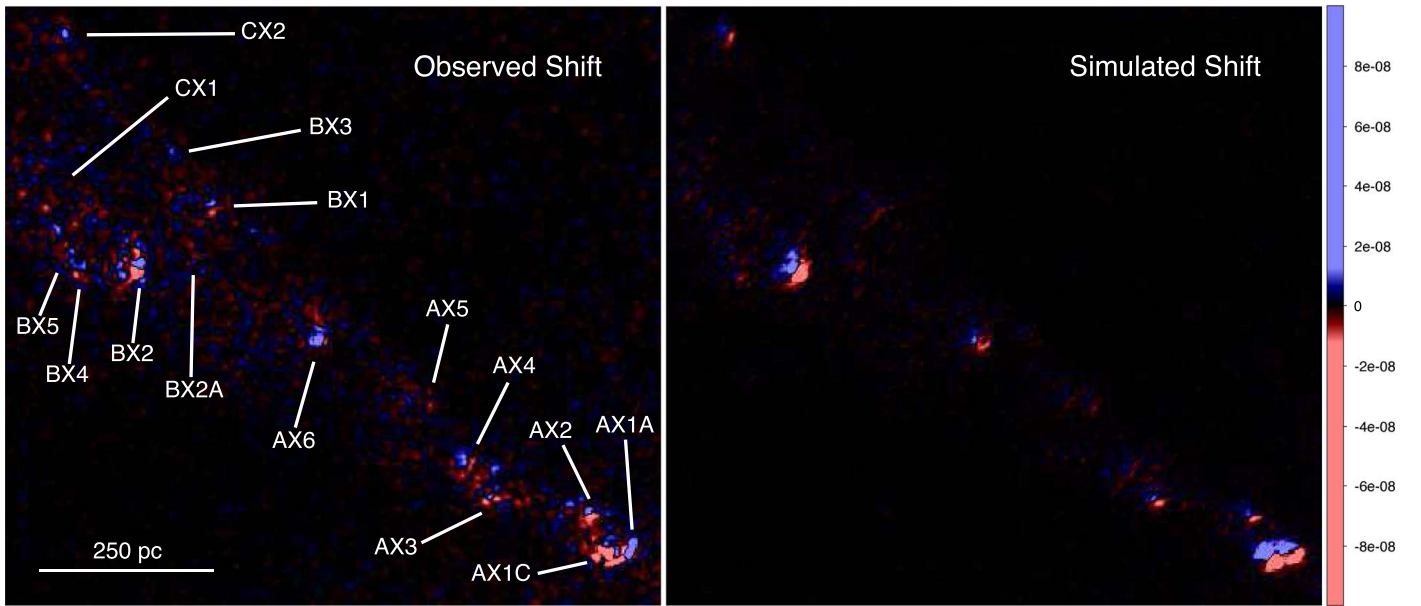
estimate. As no simulated noise was added to the synthetic map, the map appears less noisy than the observed map. Despite this minor difference, it is clear from the image comparison that the structures observed in the larger knots, such as AX1A, AX1C, and BX2, do not agree with those seen in the simulated map. In contrast, the simulated proper motion of  $0''.17$  reproduces the overall structure observed in knots AX2, AX3, AX4, AX6, and BX1.

Thus, apart from the few brightest knots, the X-ray knot complexes A, B, and C within the inner jet of Cen A moved a total of  $0.17 \pm 0''.05$  over a 15 yr timespan, giving an average proper motion of  $11.3 \pm 3.3 \text{ mas yr}^{-1}$  over the length of the jet projected between 0.26 and 1.35 kpc from the AGN. This translates to a projected pattern speed of  $\beta_{\text{app}} = 0.68 \pm 0.20$ . For a jet inclination of  $50^\circ$  (Tingay et al. 1998; Hardcastle et al. 2003), using the Doppler formula  $\beta = \beta_{\text{app}} / (\sin\theta + \beta_{\text{app}}\cos\theta)$ , this gives a intrinsic pattern speed of  $\beta = 0.57 \pm 0.11$ , allowing only for the error in  $\beta_{\text{app}}$ .

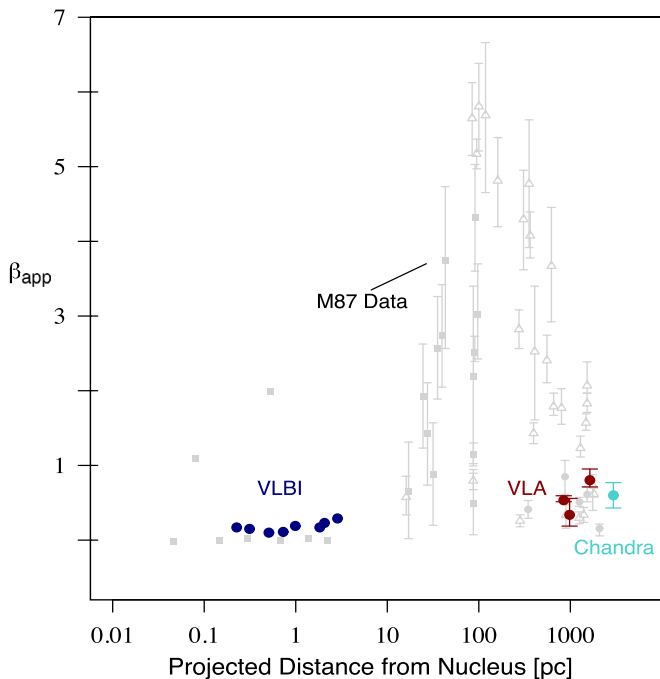
## 5. Discussion

### 5.1. Comparison of Proper Motion to Other FR I Sources

Cen A is one of only three sources with measurements of the jet velocity on both parsec and kiloparsec scales. It is therefore interesting to compare the full velocity profile of Cen A to previously studied sources. By far the best-studied jet kinematically is that in M87, which has been studied with VLBI on scales from 0.01 to 100 pc and with the VLA and the *Hubble Space Telescope* (HST) on scales from 100 to 1000 pc (projected distances; Meyer et al. 2013; Asada et al. 2014; Mertens et al. 2016; Walker et al. 2018, and references therein). The acceleration zone in M87 beginning  $<0.05$  pc (projected) from the nucleus appears to extend up to 100 pc (projected), as tracked by increasing VLBI speeds, before an “explosion” at the stationary knot HST-1, which has been seen to emit components with apparent motions as fast as  $6c$ . Beyond this, gradual deceleration takes place (with slower and faster components), forming an “envelope,” as shown in Figure 8. Here, we plot the historical M87 data (adapted from Meyer et al. 2013)



**Figure 7.** Comparison between the observed difference map (left) and a simulated difference map assuming a proper motion of  $0.68c$  along the jet axis (right). The images are binned on a scale of  $0''/123 \text{ pix}^{-1}$ , smoothed with a 3 pixel rms Gaussian, and are in units of  $\text{photon cm}^{-2} \text{ s}^{-1}$ . The red regions correspond to brighter areas in the 2002/2003 data set, while the blue regions correspond to brighter areas in the 2017 data set.



**Figure 8.** Comparison of the jet speeds vs. distance in M87 (gray points) and Centaurus A. For Cen A, the VLBI points are taken from Müller et al. (2014), the VLA points from Goodger et al. (2010), and the *Chandra* data point from the current paper. The M87 data include over a dozen studies with VLBI, the VLA, and *HST* (adapted from Meyer et al. 2013, and references therein).

in gray, and overlay the data points from Cen A in color. In particular, we plot the low VLBI speeds measured by Müller et al. (2014) in navy (error bars are smaller than the plotted points), and the previous VLA proper motions measured by Goodger et al. (2010) in red. Our *Chandra* data point (plotted at the mean distance of the boxed region used for the cross-correlation) is plotted in cyan.

It is notable that the speeds in Cen A are comparatively much lower than those seen in M87. They are also much slower than

those seen in the only other source with kiloparsec-scale optical proper motions—3C 264—which shows a remarkably similar envelope to M87 (though not as well sampled), including a peak speed of  $\sim 7c$  at approximately 100 pc from the core (Meyer et al. 2015). Here, we see that the span of the jet at which these high speeds emerge for M87 and 3C 264 (roughly between ten and a few hundred parsecs) are not sampled by the observations of Cen A so far. It is therefore not completely clear if Cen A has a jet that intrinsically does not reach high (i.e., apparent superluminal) speeds, or if we simply miss the short part of the jet in which these speeds occur. Follow-up observations with moderately high-resolution interferometry, such as the Atacama Large Millimeter/submillimeter Array (ALMA) or Square Kilometer Array (SKA), could shed light on this matter. It should be noted that while 3C 264 and M87 are both low-power FR Is ( $10^{43.8}$  and  $10^{43.7} \text{ erg s}^{-1}$  respectively; Meyer et al. 2011), Cen A has a jet power that is even lower ( $10^{43.1} \text{ erg s}^{-1}$ ; Croston et al. 2009; Wykes et al. 2013; Neff et al. 2015). It is possible that the maximum speed is set by the jet power, and in this case that effect may be compounded by a larger angle to the line of sight in Cen A, compared to M87 or 3C 264 (Biretta et al. 1999; Giovannini et al. 2001).

## 5.2. Synchrotron Cooling

A possible cause for the observed decreases in brightness discussed in Section 3 is synchrotron cooling. For a given particle energy, the rate of cooling is governed by the magnetic field strength and the angle between a particle’s velocity vector and the magnetic field, i.e., the pitch angle. For a fixed magnetic field strength, the cooling rate is maximized for particles moving perpendicular to the field. Under the Kardashev–Pacholczyk (KP) model (Kardashev 1962; Pacholczyk 1970), scattering is assumed to be negligible, so the pitch angle only changes due to energy loss. Thus, the fastest possible cooling is for particles moving at  $90^\circ$  to the field under the KP model. Assuming this model, we can estimate the minimum magnetic field strength



required to cause the observed reductions in brightness of the statistically significant fading knots AX1C and BX2, both of which were found in Section 4 to be stationary. For simplicity, all other sources of particle acceleration were considered to be negligible. Based on previously observed spectral indices for the X-ray knots (Goodger et al. 2010), we used an initial electron distribution of the form  $dN/d\gamma = K\gamma^{-p}$ , with a particle index  $p = 3$  for AX1C and  $p = 2.2$  for BX2. A maximum Lorentz factor of  $10^9$  was used in our estimates. The synchrotron spectrum was computed for the cooling electron distribution as a function of time, and the magnetic field strength was adjusted to produce the observed reduction in brightness at 1 keV. The brightness variations for the two knots, shown in Table 2, demonstrate a consistent decrease over the three epochs sampled, spanning 15 yr. We therefore assumed a total cooling timespan of 15 yr for our model. To obtain the fading reported for knot AX1C required a magnetic field strength of  $\sim 80 \mu\text{G}$ , while knot BX2 also needed a magnetic field strength of  $\sim 80 \mu\text{G}$ .

For a time-dependent synchrotron cooling model, it is almost inevitable that the spectrum steepens as the flux decreases. Defining the X-ray spectral index in terms of the flux as  $F_E \sim E^{-\alpha}$  (photon flux  $\sim E^{-(\alpha+1)}$ ) for the KP model used, the observed brightness decreases would require the spectral index at 1 keV to evolve from  $\alpha = 1$  initially to  $\alpha \simeq 1.3$  for AX1C and from  $\alpha = 0.6$  to  $\alpha \simeq 0.8$  for knot BX2. To test for this effect, spectral indices were estimated for the knots in each epoch using a `phabs` `powerlaw` model in XSPEC 12.10.0c (Arnaud 1996). The spectra were binned over 0.9–2.0 keV, where HI column densities of  $5.1 \times 10^{21} \text{cm}^{-2}$  and  $8.4 \times 10^{20} \text{cm}^{-2}$  were used for AX1C and BX2, respectively, based on results from Dickey & Lockman (1990). The observed photon indices from the 2002/2003 and 2017 epochs agreed within  $1\sigma$  for both AX1C ( $1.98 \pm 0.09$  versus  $1.93 \pm 0.08$ , respectively) and BX2 ( $1.40 \pm 0.08$  versus  $1.45 \pm 0.09$ , respectively). Given the discrepancy between the observed indices and those predicted from the synchrotron cooling model, we conclude that the decrease in brightness is unlikely to be from synchrotron cooling. The lack of evidence for the emission spectra steepening expected from synchrotron cooling makes it improbable that the actual magnetic field strengths exceed our estimates, so the value of  $80 \mu\text{G}$  for both AX1C and BX2 should therefore be viewed as an upper limit.

### 5.3. Adiabatic Cooling

Instead of synchrotron cooling, adiabatic expansion may account for the observed rapid fading. Under the usual assumptions of isotropy, typical electron Lorentz factors scale under adiabatic expansion as  $\gamma \sim V^{-1/3}$ , with  $V$  being the volume, while the magnetic field strength scales as  $B \sim V^{-2/3}$ . For a power-law electron distribution of the form  $dN/d\gamma \sim \gamma^{-p}$ , the synchrotron flux at a fixed energy then scales as  $F_E \sim V^{-2p/3}$ . From this relationship, the observed changes in brightness could be used to place broad constraints on the geometry of the fading knots.

We initially considered one-dimensional expansion of the system where the knots are disk-like and all extension occurred along the line of sight at a speed of  $c$  over 15 yr. This approximation maximizes both the expansion rate and the diameter-to-width ratio of the disk. Using the changes in brightness from Table 2, the initial line-of-sight width was estimated as 59 pc for AX1C and 85 pc for BX2. The line-of-sight

estimates were compared to the projected knot diameters, which were estimated from the 2002/2003 image using radial profile cuts from the knot centers as defined by the CIAO `dmstat` routine. The knot diameter was measured as 40 pc for AX1C and 140 pc for BX2, giving a diameter-to-width ratio of 0.7 for AX1C and 1.6 for BX2. Even assuming the maximum expansion rate, the derived geometry is consistent with that expected for a front of shocked gas along the jet axis (Komissarov & Falle 1997). Our approximation of one-dimensional adiabatic expansion is therefore physically consistent and agrees with the observations.

Although one-dimensional adiabatic expansion is plausible, it is more likely that the knots are undergoing complex expansion in a three-dimensional space. To approximate the average expansion rate for such a system, we considered the knots to be spherical where the volume expands equally in all directions. Using the changes in brightness from Table 2 and the measured initial radii, the final knot radii after 15 yr of expansion were estimated to be 21 pc for AX1C and 73 pc for BX2. The rate of expansion equals  $\sim 10 \text{mas yr}^{-1}$ , or  $\sim 0.6c$ , for both knots, a change in the knots that is not resolvable in the difference maps due to the low count statistics at the outer knot edges. Despite lacking a clear detection of geometric changes indicative of expansion, we found the observations to be consistent with adiabatic expansion for both geometric cases. Since adiabatic expansion can be reconciled with observations for expansion in either one or three dimensions, it plausibly accounts for the dimming seen in the difference maps. This is consistent with radio observations of Cen A that have determined adiabatic expansion to be the primary cause of brightness variations (Goodger et al. 2010).

### 5.4. Knot Origins

We may constrain possible origins for the X-ray knots based on the *Chandra* observations. One knot formation mechanism is the short-term process of magnetic field reconnection, also referred to as impulsive particle acceleration. Goodger et al. (2010) pointed out that with an equipartition value of the magnetic field strength in the AX1A knot,  $\sim 760 \mu\text{G}$ , one might see a complete change in the appearance of the X-ray emission in about six years. No such drastic changes are seen over our 15 yr timespan, and our magnetic field strength estimate of the adjacent knot AX1C (Section 5.2) suggests a value no greater than  $\sim 9$  times lower than equipartition. This result supports particle acceleration processes that are longer-lived than reconnection.

Stationary knots, such as the A1 knots that were found to have a proper motion upper limit of  $\sim 0.1c$  (Section 4), are frequently suggested to be associated with an obstacle in the jet. Non-destructive interactions of the jet plasma with gas or molecular clouds, such as the stellar winds of the  $\sim 3$  and  $\sim 12$  Gyr old populations known to reside in the elliptical galaxy (Rejkuba et al. 2011), remain a plausible proposition for the stationary knots. AGB stars of the 3 Gyr old population would certainly make for an effective obstruction, a topic that will be extensively discussed in a forthcoming paper (S. Wykes et al. 2019, in preparation). Here, we point to brightness changes seen in the upstream regions of knots AX1A and AX1C (Figure 3). Interestingly, the upstream part of AX1C appears to have faded in the 2017 images, while AX1A has brightened in its upstream region at the same epoch. Assuming that these knots are each associated with an obstacle in the jet,

one would expect standing shocks in this region (Hardcastle et al. 2003; Wykes et al. 2015, S. Wykes et al. 2019, in preparation). These variations could arise from modest, local changes in flow speed, causing the bow shocks to vary in strength: a reduction in flow speed will cause the shock to weaken and advance upstream, while an increase in flow speed will have the opposite effect.

In contrast to the stationary knots, knots that are moving in the jet at velocities approaching the bulk flow speed are unlikely to be a result of the jet plasma interacting with a relatively stationary obstacle. Goodger et al. (2010) postulated that a moderate compression of the jet fluid is the most likely scenario for the origin of the moving knots. Given that none of the observed X-ray knots extend over the whole diameter of the jet, such localized regions may be due to collisions of the jet plasma with an obstacle that is on the verge of being dissolved in the jet. This would apply to planetary nebulae and gas/molecular clouds. In addition to the knots, the existence of a well-defined peak in the cross-correlation at a significant offset from zero (Figure 6) requires a significant fraction of the fainter substructure within the jet to be moving at high speed in the jet's direction of flow. Were this due to changes in the jet power, one would expect to see features that cross the full jet. Since no such features are observed, the most likely cause is "turbulence" in the jet, potentially generated by interaction with obstacles. This might cause compressions and weak shocks, or it might result in shear that modifies the magnetic field and/or accelerates particles. Follow-up deep-exposure X-rays observations could further clarify the interpretation of such substructure. Continued monitoring observations will also assist in constraining the overall lifetime of these features, and subsequently their physical nature.

## 6. Conclusions

Recent and archival *Chandra* observations were analyzed for evidence of variability and proper motion in the X-ray jet of Cen A. Data spanning 15 yr were co-aligned to high accuracy, and difference maps of the epochs were generated. Collective proper motion for the fainter substructure in the jet was measured by fitting the cross-correlation between epochs, finding a projected speed of  $11.3 \pm 3.3 \text{ mas yr}^{-1}$  over the projected jet length 0.26–1.35 kpc from the AGN. This translates to a projected pattern speed of  $\beta_{\text{app}} = 0.68 \pm 0.20$ , or an intrinsic pattern speed of  $\beta = 0.57 \pm 0.11$ , assuming a jet inclination angle of  $50^\circ$ . The cross-correlation results also imply that both the X-ray knots and a significant fraction of the substructure within the jet move at much the same speed, which is presumably the flow speed of the jet. Three of the brightest knots in the jet (AX1A, AX1C, BX2) were found to be stationary based on cross-correlation fits and centroid analyses, placing an upper limit of  $\beta_{\text{app}} < 0.10$  on each knot. All measurements are consistent with proper motion estimates from VLA radio observations of knots within the same projected distance of Cen A.

Proper motion estimates for Cen A were compared to jet velocity measurements for the other FR I sources M87 and 3C 264, and the speeds in Cen A were found to be comparatively lower. It remains to be determined whether this discrepancy may be attributed to the jet of Cen A not reaching such high speeds, differences in power and/or viewing angle between the various systems, or whether the small-scale region of the jet in which these high speeds happen has simply not

been observed. Follow-up observations with higher-resolution instruments, such as ALMA or SKA, may help to resolve these issues.

Variations in brightness up to 27% were detected for several X-ray knots in the jet, and potential mechanisms that may explain the observed fading of knots BX2 and AX1C were tested against the results. The changes in spectral slope expected to accompany fading due to synchrotron cooling were not found in the spectral analysis of knots BX2 and AX1C, ruling out synchrotron cooling and placing an upper limit of  $80 \mu\text{G}$  for both AX1C and BX2 on their magnetic field strengths. Adiabatic expansion was also tested as a potential fading mechanism for the knots, and it was found to be consistent with observations for expansion in one or three dimensions. Adiabatic expansion is therefore the mostly likely cause of the observed decreases in brightness of the knots.

Our results were used to place constraints on models for the origin of the knots. Short-term acceleration processes, such as magnetic field reconnection, are disfavored based on the low magnetic field strength estimates and the lack of changes in appearance of the knots observed over the 15 yr timespan. Stationary knots were best explained by the jet plasma overrunning an obstacle, stellar wind of a tip-AGB star or a cloud crossing the jet, with the stationary A1 knots showing potential evidence of standing shocks. In contrast, the moving knots may either arise from internal differences in jet speed or from late stages of the jet interaction with the nebular or cloud material. Deeper X-ray observations should help to define this substructure, while longer-term observations could constrain its lifetime, placing further constraints on its nature.

We thank the reviewer for his/her valuable comments and suggestions. Support for this work was provided by the National Aeronautics and Space Administration through *Chandra* Award Number G07-18104X issued by the *Chandra* X-ray Observatory Center, which is operated by the Smithsonian Astrophysical Observatory for and on behalf of the National Aeronautics Space Administration under contract NAS8-03060. S.W., P.E.J.N., and R.P.K. were supported in part by NASA contract NAS8-03060. S.W. thanks the Harvard-Smithsonian CfA for a research fellowship.

*Software:* CIAO v4.9 (Fruscione et al. 2006), XSPEC 12.10.0c (Arnaud 1996).

## ORCID iDs

Bradford Snios  <https://orcid.org/0000-0002-4900-928X>  
 Paul E. J. Nulsen  <https://orcid.org/0000-0003-0297-4493>  
 Ralph P. Kraft  <https://orcid.org/0000-0002-0765-0511>  
 Eileen T. Meyer  <https://orcid.org/0000-0002-7676-9962>  
 Mark Birkinshaw  <https://orcid.org/0000-0002-1858-277X>  
 Diana M. Worrall  <https://orcid.org/0000-0002-1516-0336>  
 William R. Forman  <https://orcid.org/0000-0002-9478-1682>

## References

- Alūzas, R., Pittard, J. M., Hartquist, T. W., Falle, S. A. E. G., & Langton, R. 2012, *MNRAS*, **425**, 2212
- Arnaud, K. A. 1996, in ASP Conf. Ser. 101, *Astronomical Data Analysis Software and Systems V*, ed. G. H. Jacoby & J. Barnes (San Francisco, CA: ASP), 17
- Asada, K., Nakamura, M., Doi, A., Nagai, H., & Inoue, M. 2014, *ApJL*, **781**, L2
- Bicknell, G. V. 1994, *ApJ*, **422**, 542
- Biretta, J. A., Sparks, W. B., & Macchetto, F. 1999, *ApJ*, **520**, 621

- Boccardi, B., Krichbaum, T. P., Ros, E., & Zensus, J. A. 2017, *A&ARv*, **25**, 4
- Breiding, P., Meyer, E. T., Georganopoulos, M., et al. 2017, *ApJ*, **849**, 95
- Canvin, J. R., & Laing, R. A. 2004, *MNRAS*, **350**, 1342
- Canvin, J. R., Laing, R. A., Bridle, A. H., & Cotton, W. D. 2005, *MNRAS*, **363**, 1223
- Cotton, W. D., Feretti, L., Giovannini, G., Lara, L., & Venturi, T. 1999, *ApJ*, **519**, 108
- Croston, J. H., Kraft, R. P., Hardcastle, M. J., et al. 2009, *MNRAS*, **395**, 1999
- Dickey, J. M., & Lockman, F. J. 1990, *ARA&A*, **28**, 215
- Fanaroff, B. L., & Riley, J. M. 1974, *MNRAS*, **167**, 31P
- Feigelson, E. D., Schreier, E. J., Delvaile, J. P., et al. 1981, *ApJ*, **251**, 31
- Fruscione, A., McDowell, J. C., Allen, G. E., et al. 2006, *Proc. SPIE*, **6270**, 62701V
- Gentry, E. S., Marshall, H. L., Hardcastle, M. J., et al. 2015, *ApJ*, **808**, 92
- Giovannini, G., Cotton, W. D., Feretti, L., Lara, L., & Venturi, T. 2001, *ApJ*, **552**, 508
- Goodger, J. L., Hardcastle, M. J., Croston, J. H., et al. 2010, *ApJ*, **708**, 675
- Hada, K., Kino, M., Doi, A., et al. 2016, *ApJ*, **817**, 131
- Hardcastle, M. J., Birkinshaw, M., & Worrall, D. M. 2001, *MNRAS*, **326**, 1499
- Hardcastle, M. J., Kraft, R. P., Sivakoff, G. R., et al. 2007, *ApJL*, **670**, L81
- Hardcastle, M. J., Kraft, R. P., & Worrall, D. M. 2006, *MNRAS*, **368**, L15
- Hardcastle, M. J., Worrall, D. M., Kraft, R. P., et al. 2003, *ApJ*, **593**, 169
- Harris, D. E., Biretta, J. A., & Junor, W. 1997, *MNRAS*, **284**, L21
- Harris, G. L. H., Rejkuba, M., & Harris, W. E. 2010, *PASA*, **27**, 457
- Kardashev, N. S. 1962, *SvA*, **6**, 317
- Kataoka, J., Stawarz, L., Aharonian, F., et al. 2006, *ApJ*, **641**, 158
- Komissarov, S. S., & Falle, S. A. E. G. 1997, *MNRAS*, **288**, 833
- Kraft, R. P., Forman, W. R., Jones, C., et al. 2002, *ApJ*, **569**, 54
- Laing, R. A., & Bridle, A. H. 2002, *MNRAS*, **336**, 1161
- Laing, R. A., Parma, P., de Ruiter, H. R., & Fanti, R. 1999, *MNRAS*, **306**, 513
- Lister, M. L., Aller, M. F., Aller, H. D., et al. 2013, *AJ*, **146**, 120
- Marshall, H. L., Miller, B. P., Davis, D. S., et al. 2002, *ApJ*, **564**, 683
- Mertens, F., Lobanov, A. P., Walker, R. C., & Hardee, P. E. 2016, *A&A*, **595**, A54
- Meyer, E. T., Fossati, G., Georganopoulos, M., & Lister, M. L. 2011, *ApJ*, **740**, 98
- Meyer, E. T., & Georganopoulos, M. 2014, *ApJL*, **780**, L27
- Meyer, E. T., Georganopoulos, M., Sparks, W. B., et al. 2015, *ApJ*, **805**, 154
- Meyer, E. T., Sparks, W. B., Biretta, J. A., et al. 2013, *ApJL*, **774**, L21
- Meyer, E. T., Sparks, W. B., Georganopoulos, M., et al. 2017, *Galax*, **5**, 8
- Müller, C., Kadler, M., Ojha, R., et al. 2014, *A&A*, **569**, A115
- Nagai, H., Haga, T., Giovannini, G., et al. 2014, *ApJ*, **785**, 53
- Neff, S. G., Eilek, J. A., & Owen, F. N. 2015, *ApJ*, **802**, 88
- Pacholczyk, A. G. 1970, *Radio Astrophysics. Nonthermal Processes in Galactic and Extragalactic Sources* (San Francisco, CA: W. H. Freeman)
- Perucho, M., Martí, J. M., Laing, R. A., & Hardee, P. E. 2014, *MNRAS*, **441**, 1488
- Peterson, B., Wanders, I., Horne, K., et al. 1998, *PASP*, **110**, 660
- Rejkuba, M., Harris, W. E., Greggio, L., & Harris, G. L. H. 2011, *A&A*, **526**, A123
- Snios, B., Nulsen, P. E. J., Wise, M. W., et al. 2018, *ApJ*, **855**, 71
- Tingay, S. J., Jauncey, D. L., Reynolds, J. E., et al. 1998, *AJ*, **115**, 960
- Tingay, S. J., & Lenc, E. 2009, *AJ*, **138**, 808
- Turner, T. J., George, I. M., Mushotzky, R. F., & Nandra, K. 1997, *ApJ*, **475**, 118
- Walker, R. C., Hardee, P. E., Davies, F. B., Ly, C., & Junor, W. 2018, *ApJ*, **855**, 128
- Worrall, D. M., Birkinshaw, M., & Hardcastle, M. J. 2001, *MNRAS*, **326**, L7
- Worrall, D. M., Birkinshaw, M., Kraft, R. P., et al. 2008, *ApJL*, **673**, L135
- Worrall, D. M., Birkinshaw, M., O'Sullivan, E., et al. 2010, *MNRAS*, **408**, 701
- Wykes, S., Croston, J. H., Hardcastle, M. J., et al. 2013, *A&A*, **558**, A19
- Wykes, S., Hardcastle, M. J., Karakas, A. I., & Vink, J. S. 2015, *MNRAS*, **447**, 1001
- Wykes, S., Snios, B., Nulsen, P. E. J., et al. 2019, *MNRAS*, in press