

DYNAMICS AND DEPOSITION OF SEDIMENT-BEARING MULTI-PULSED FLOWS AND
GEOLOGICAL IMPLICATION

Viet Luan Ho^{1*}, Robert M. Dorrell², Gareth M. Keevil¹, Robert E. Thomas³, Alan D. Burns⁴,
Jaco H. Baas⁵, William D. McCaffrey^{1†}

¹School of Earth and Environment, University of Leeds, Leeds, UK, LS2 9JT, ²Faculty of
Science and Engineering, University of Hull, Hull, UK, HU6 7RX, ³Energy and Environment
Institute, University of Hull, Hull, UK, HU6 7RX, ⁴School of Process and Chemical Engineering,
University of Leeds, Leeds, UK, LS2 9JT, ⁵School of Ocean Sciences, Bangor University,
Anglesey, UK, LL59 5AB.

* Currently at Imperial College London, London, UK, SW7 2AZ.

Key words: multi-pulsed turbidites, pulsed turbidites, multi-pulsed flows, single-pulsed
turbidites, sediment-bearing flows

Supplementary materials

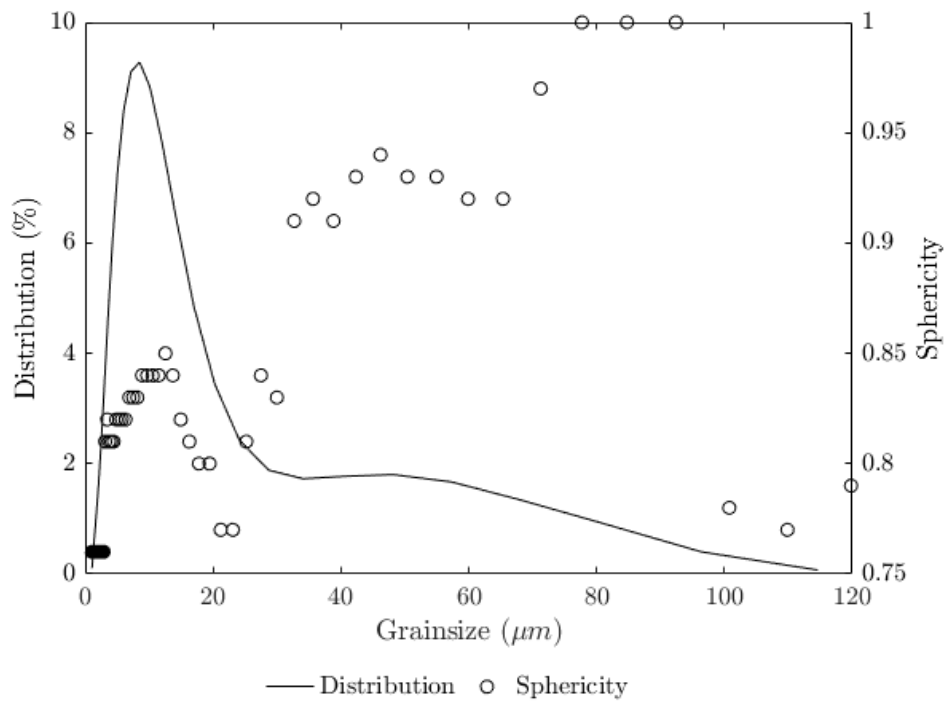


Figure A-1 - Grain size distribution and grain shape data of sediments in the lockboxes used in the experiments.

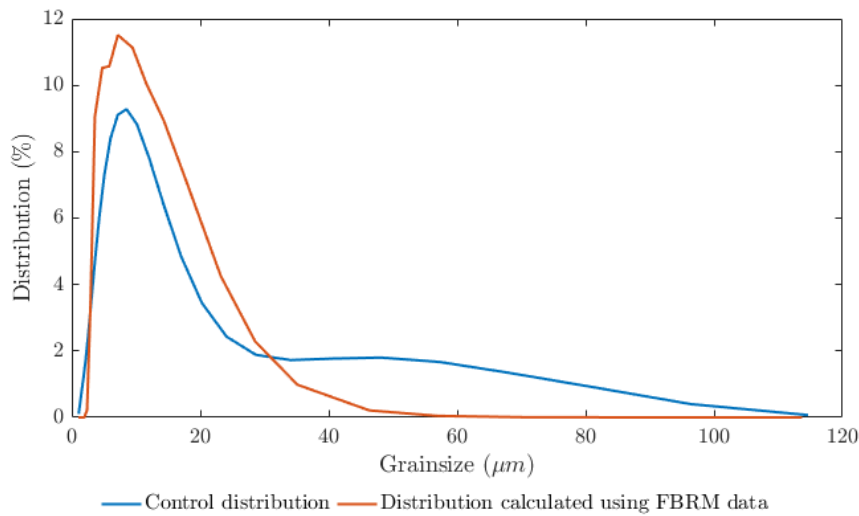


Figure A-2 - Comparison between two data sets of grain size distribution analysed using the same control mixture of sediments; such control mixture is representative of the composition of sediments used in the lockboxes. Note: i) analysis using laser diffraction granulometry method, blue curve (by deploying Malvern 2000e), ii) analysis using FBRM measurement and inversion, red curve and iii) this plot indicates that the reliability of the inversion algorithm is acceptable.