

INDEX TO PLATES

Alum industry	nos. 10, 24, 34, 35, 42, 43
Brewery	no. 200
Castleton	nos. 44-47, 59, 62, 102, 202
Church interiors	nos. 165-167, 197-198
Commondale brickworks	nos. 67, 191
Construction industry	no. 116
Country residences	nos. 139-146
Farms	nos. 70, 73, 74, 147-149
Floods	nos. 175-177, 193
Grosmont	nos. 48-50
Holidays and tourism	nos. 30-32, 82, 93, 94
Hunting	no.134
Landscapes	nos. 6, 7, 21, 60-61, 63-65, 68-69, 89, 196
Lythe	nos. 51-56, 171-174
church	nos. 97-100, 104, 107-108, 137, 161-162, 189
school	nos. 159, 160

Mulgrave castle	nos. 1-4, 85, 105, 117-125, 136, 138, 196, 201
Normanby, Lord	no. 126
Portraits	nos. 183, 188
Quarrying	no. 192
Railways	nos. 12-14, 71-72,
Ramsdale Mill	no. 186
Rigg Mill	no.81
Roads	nos. 5, 8, 11, 15-25, 35, 57-58, 62, 67, 103, 195
Road Whitby-Sandsend	nos.101, 106, 109-111, 194
Robin Hood's Bay	no. 199
Robson's Cottage	no. 151
Runswick	nos. 95-96
Sandsend	nos. 24, 30, 66, 78, 150, 175, 190
Shooting groups	nos. 133, 193
Sleights bridge	nos. 112-115
Staithe	nos. 86-87, 90-92

Transport	nos. 19-21, 26-33, 51-53, 71-72, 103
Villages	nos. 57-58
Water supply	nos. 152-158
Watson's home and studio	nos. 180-184, 187, 203-204
Whitby	nos. 75-77, 79-80, 83-84, 88, 135, 156, 178-179, 185, 190
Brunswick Chapel	nos. 163-167
Windsor	nos. 127-132



MULGRAVE CASTLE. 2A. T. W.

190

Plate 1



MULGRAVE CASTLE. 4A. T. W.



Plate 3



Plate 4



Plate 5



CASTLETON, 176 T. W.

Plate 6



LEALHOLME, 160, T. W.

127



Plate 8

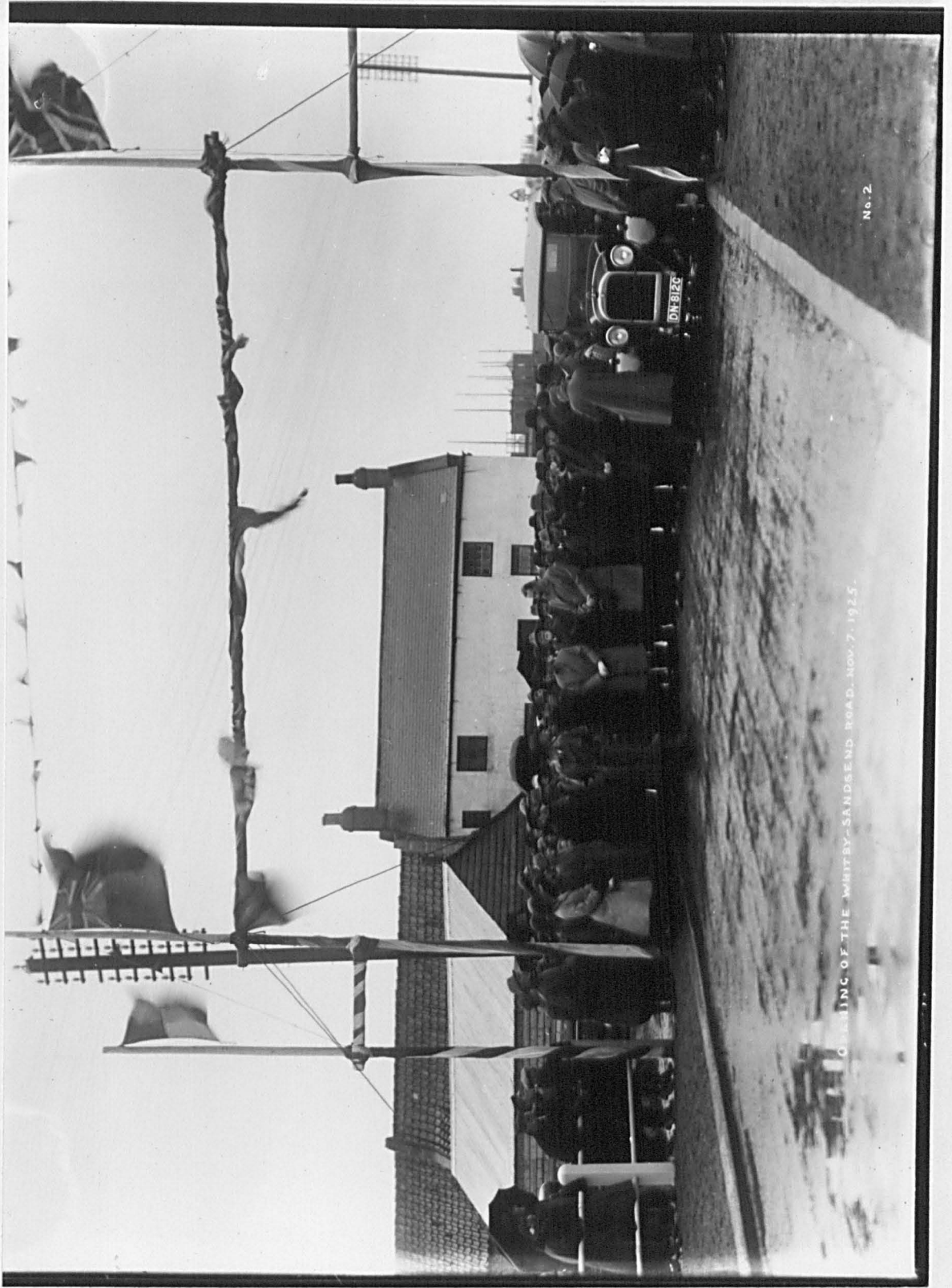


CASTLETON. T. W. 179.

68



Plate 10



No. 2

OPENING OF THE WHITLEY-SANDEID ROAD, NOV. 7, 1925.

Plate 11



CASTLETON 1909

1909

Plate 12

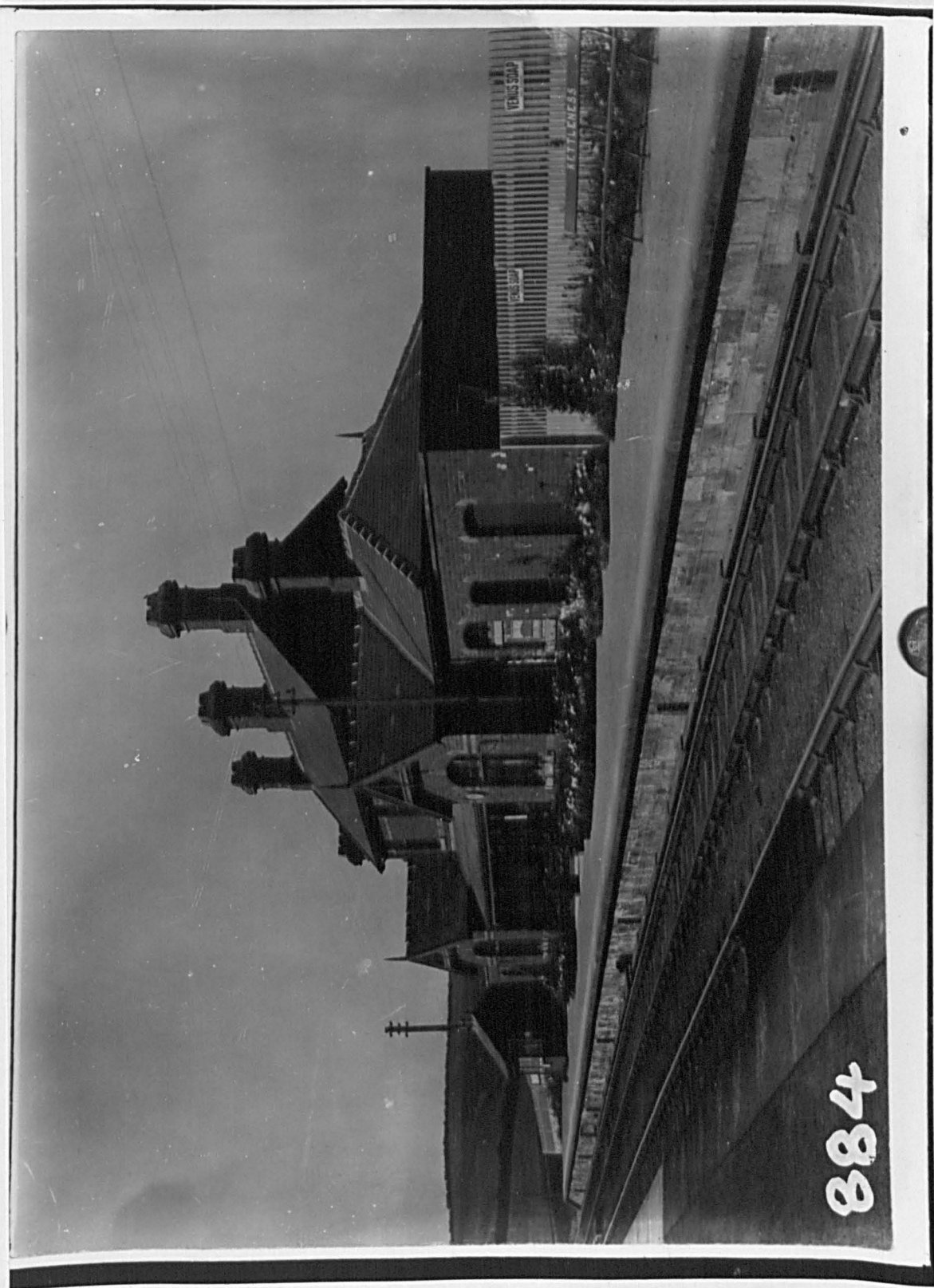


Plate 13



Plate 14



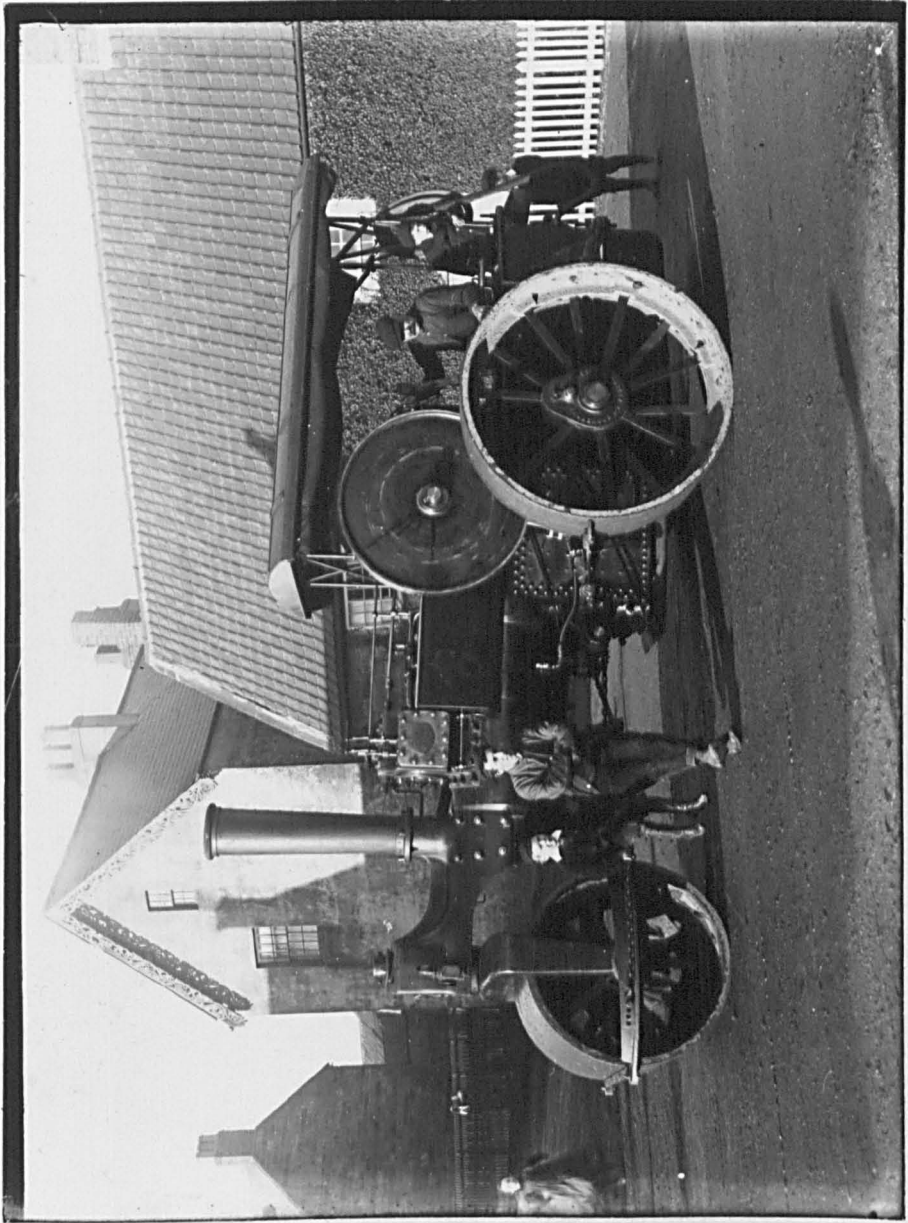


Plate 16



CASTLETON, 182, T. W.

Plate 17



Plate 18



Plate 19



Plate 20



Plate 21



Plate 22



Plate 23

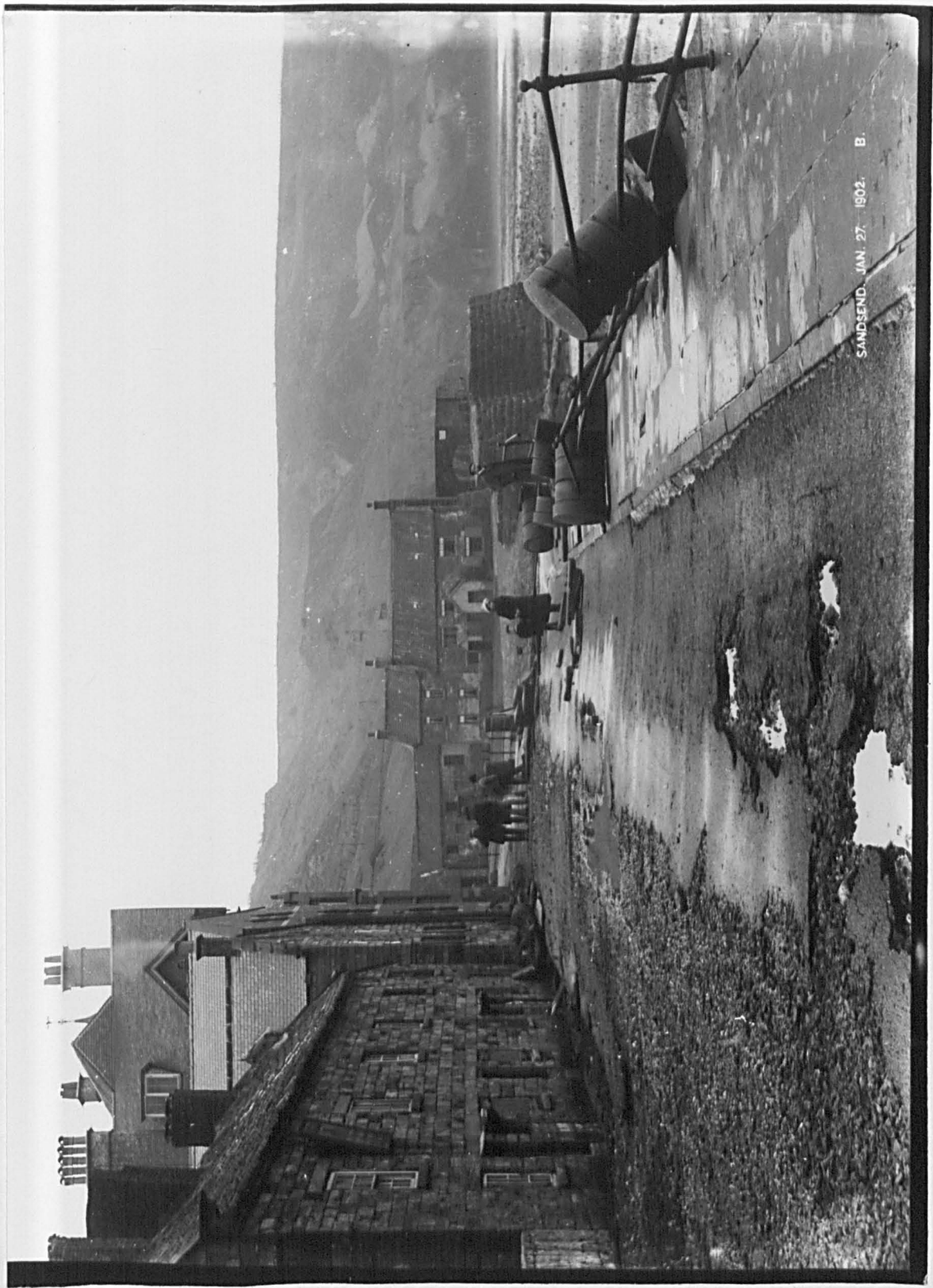


Plate 24

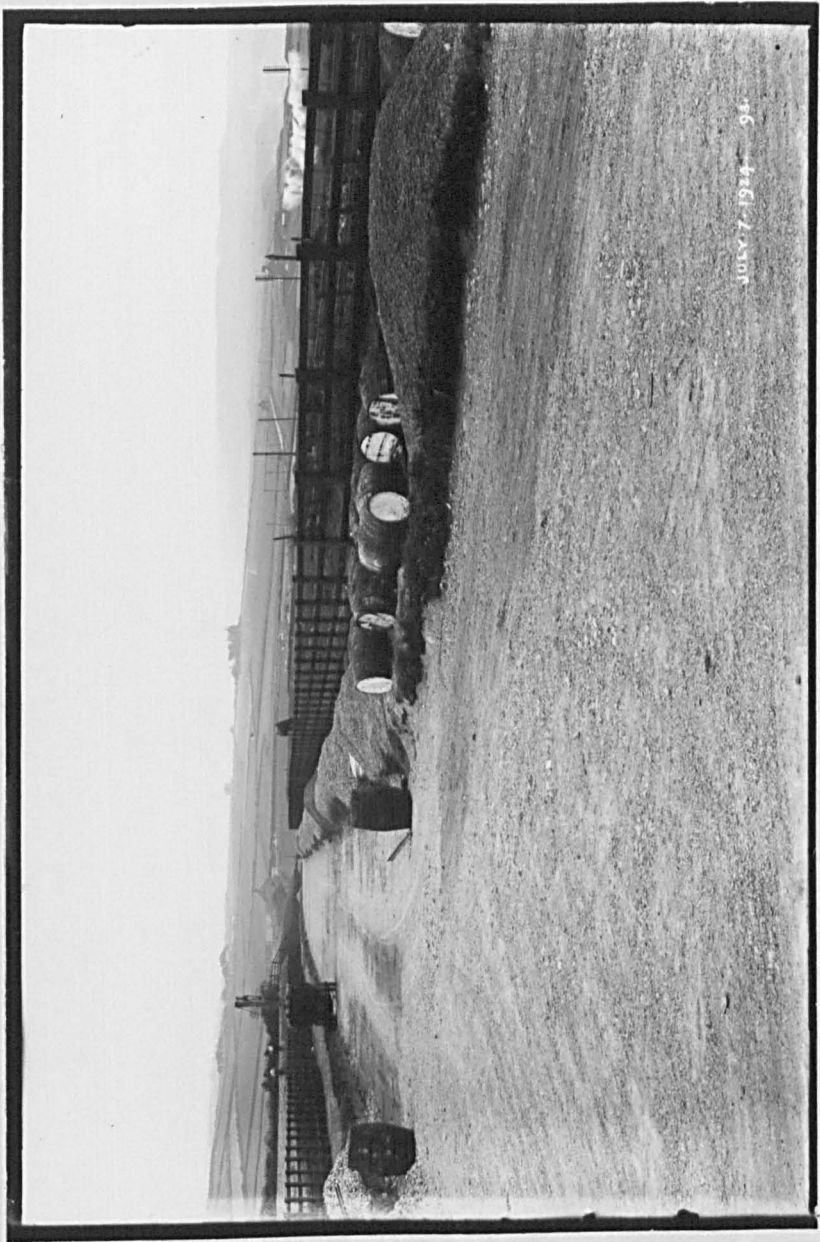


Plate 25





Plate 26

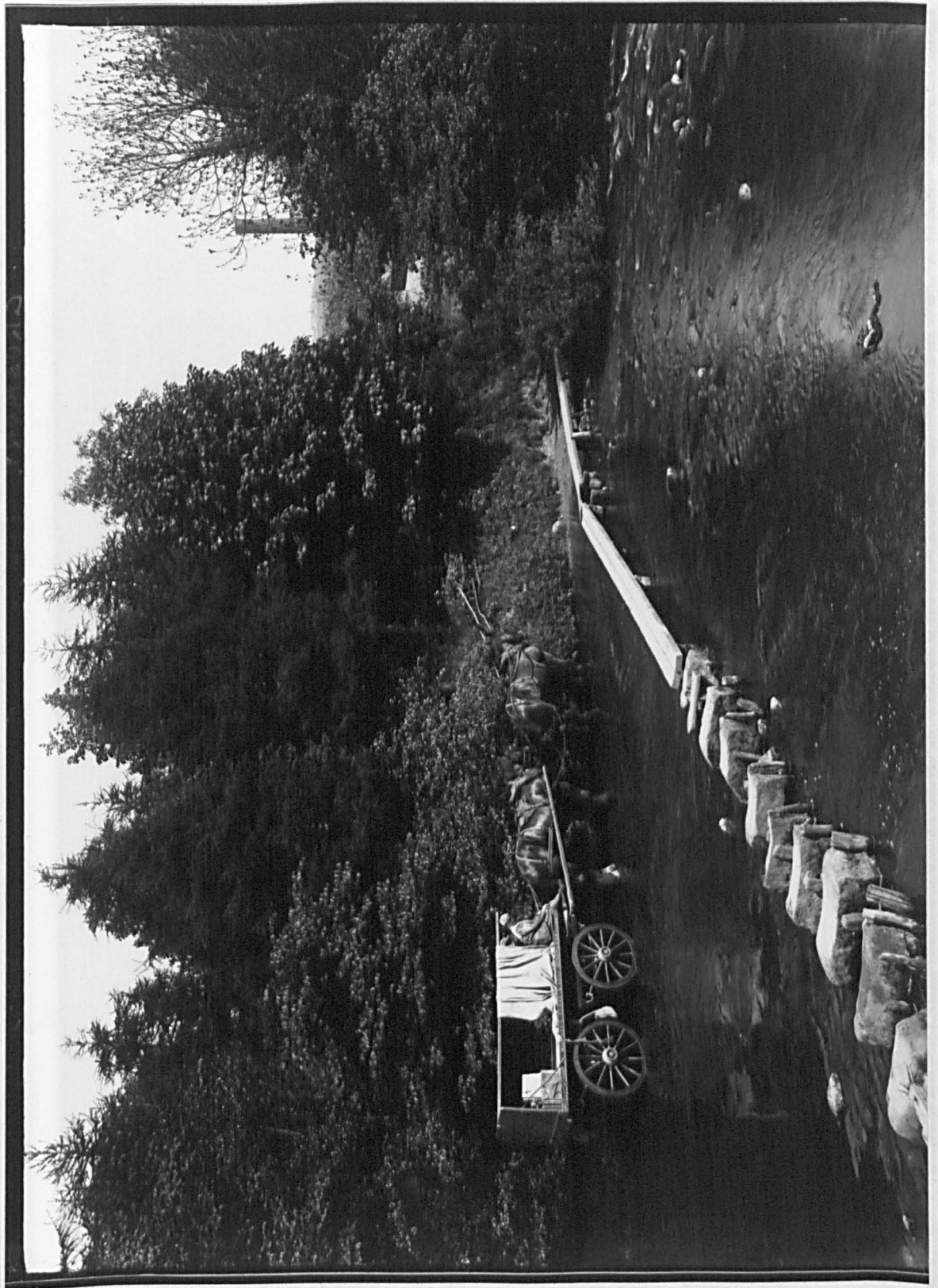


Plate 27



Plate 28



SEPT. 25, 1904

4168

Plate 29



Plate 30



Plate 31



Plate 32







Plate 35



Plate 36



Plate 37

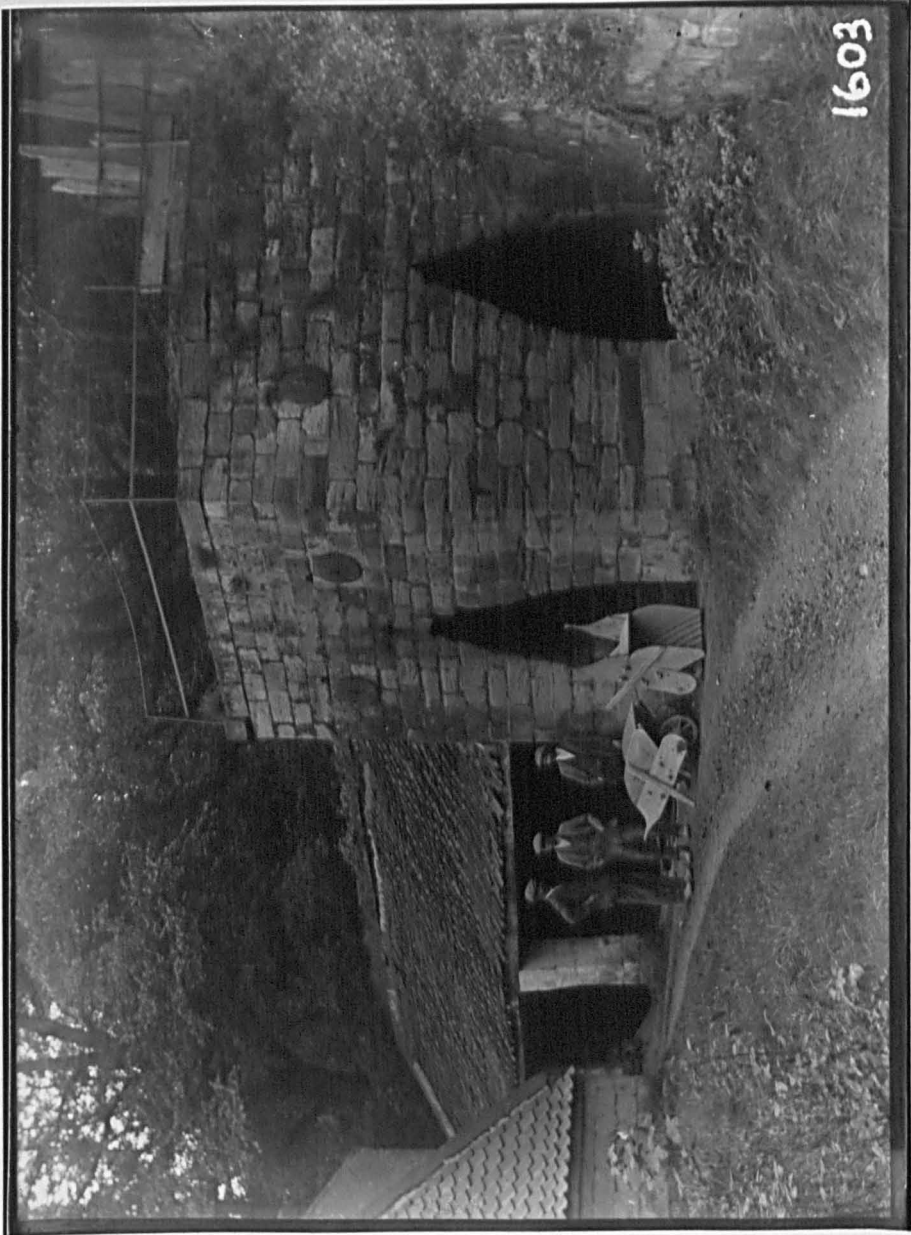


Plate 38



Plate 39

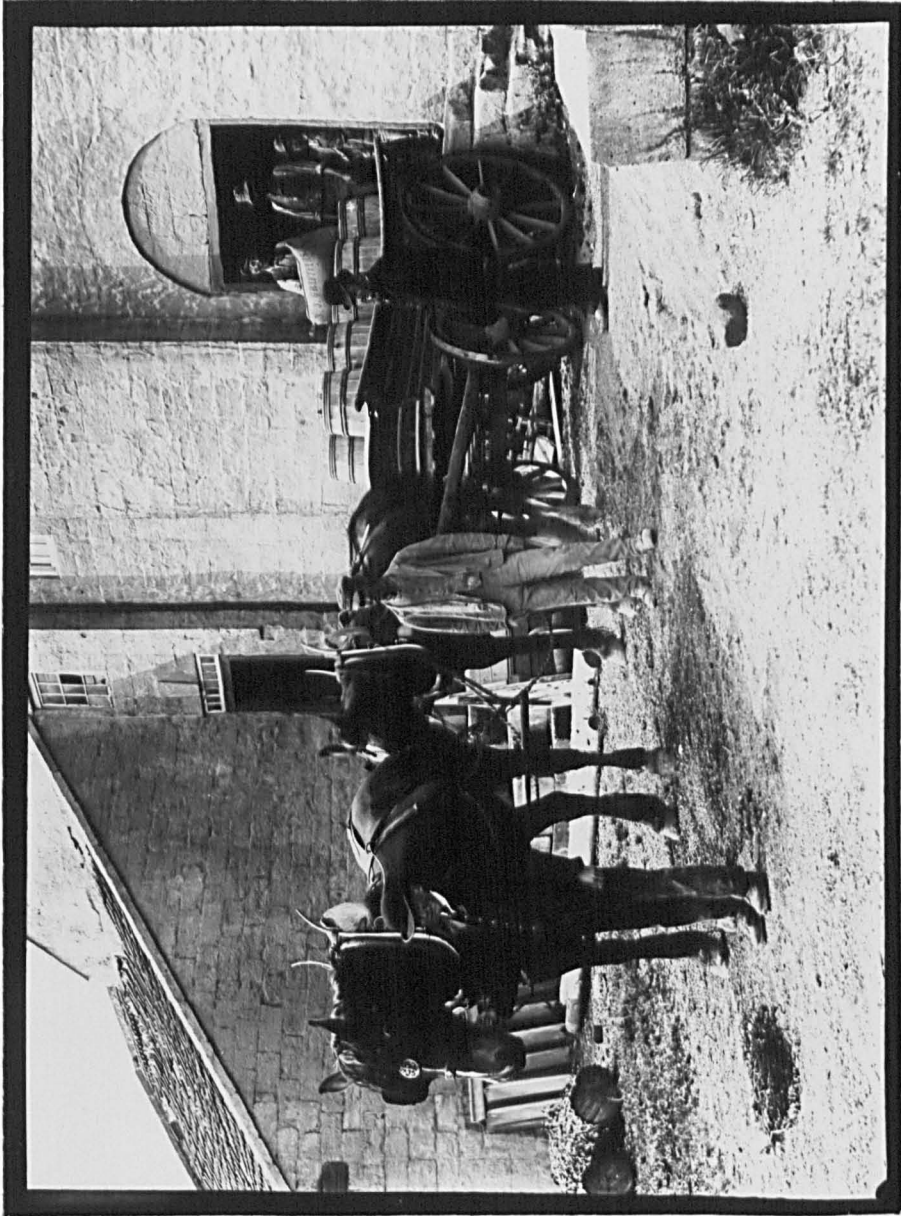


Plate 40



Plate 41



1898-1899, MOUNTAIN - WASHINGTON, W.

Plate 42



ROCK HOLE, MULGRAVE WOODS, T.W.



CASTLETON. 1861. T. W.



CASTLETON. 194. T. W.

938



CASTLETON 1886 T. W.

Plate 46



Plate 47



GROSMONT, J.

Plate 48



Plate 49

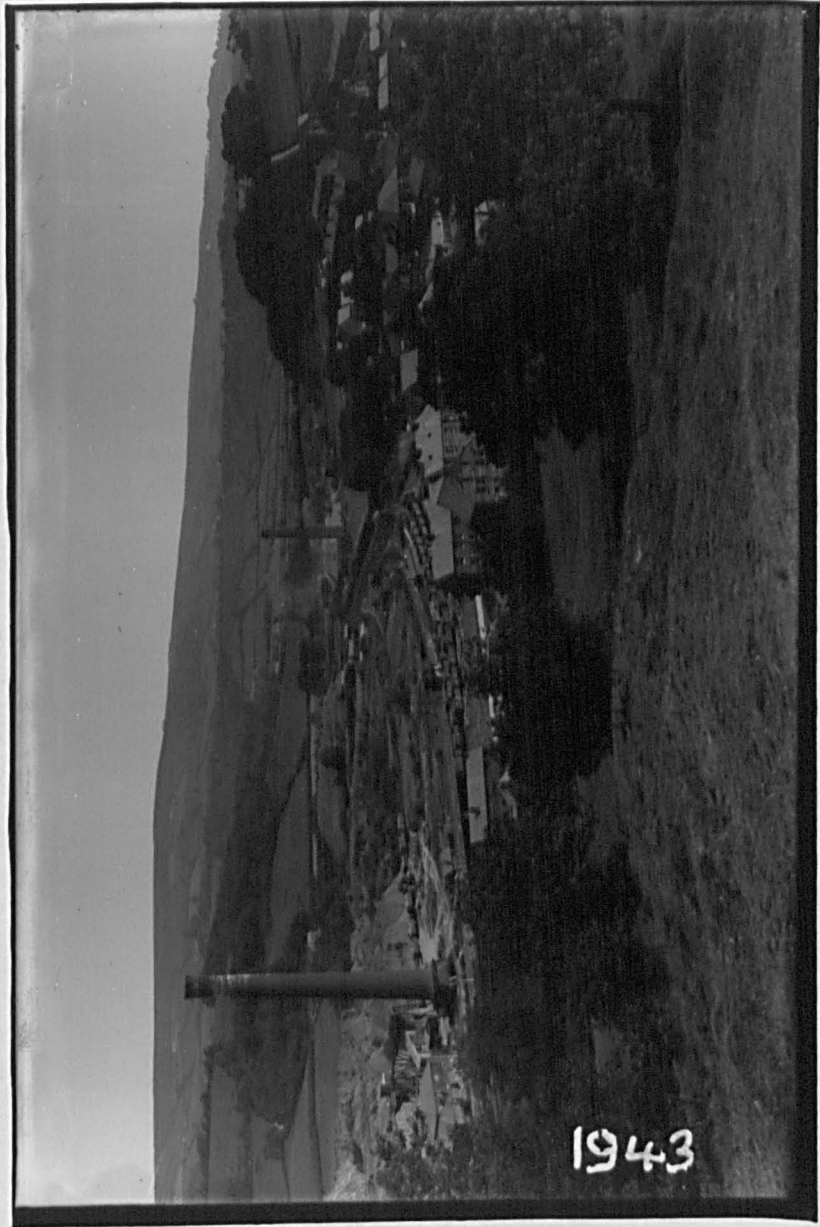


Plate 50



Plate 51



Plate 52



№ 2
2097

LYTHE VILLAGE HALL PICNIC, UGTHORPE MOORS, AUG. 6, 1925.

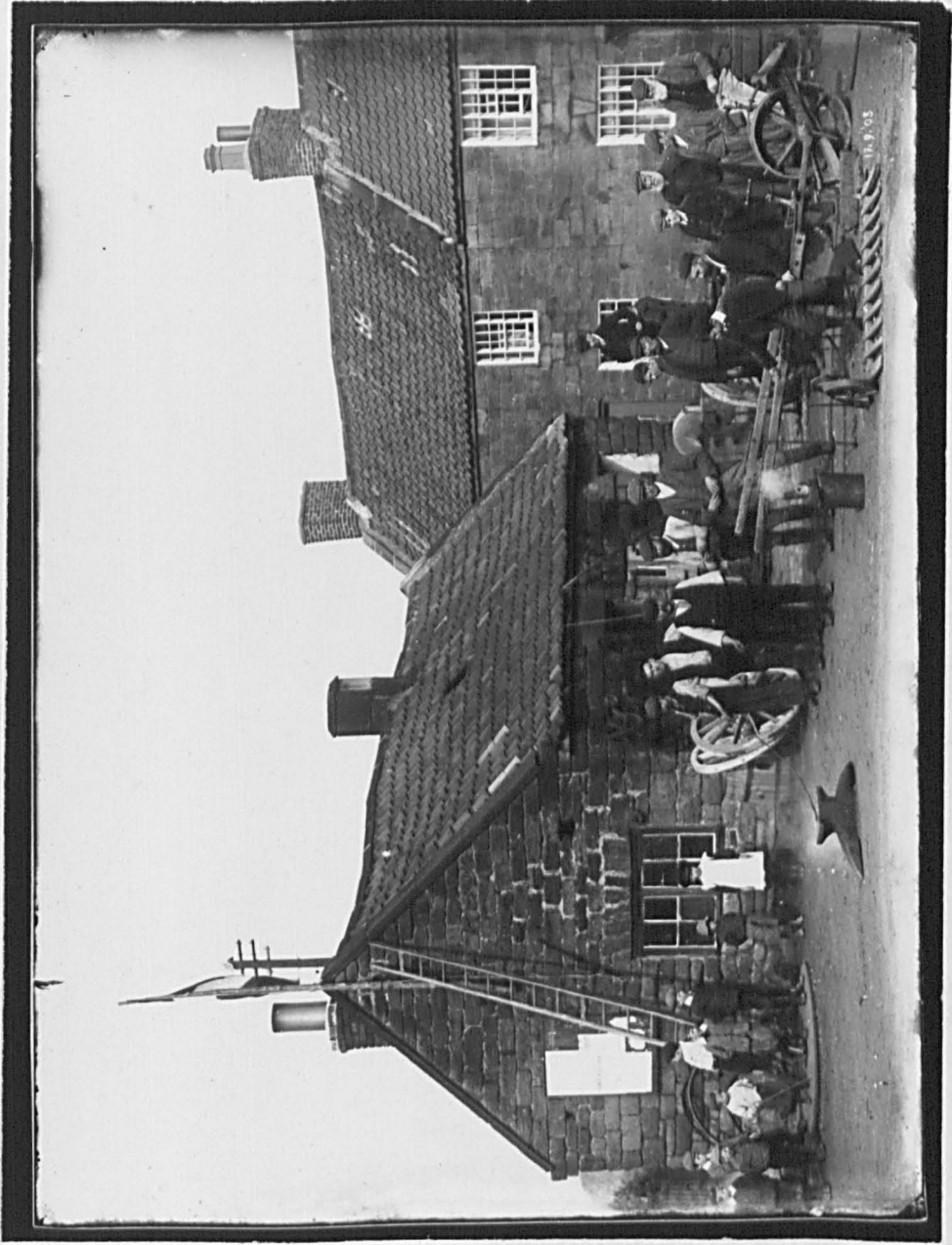


Plate 54



Plate 55



Plate 56



Plate 57



Plate 58



CASTLETON, 176 T.W.

934



Plate 60



Plate 61



Plate 62



UNDERPARK, LEALHOLM.

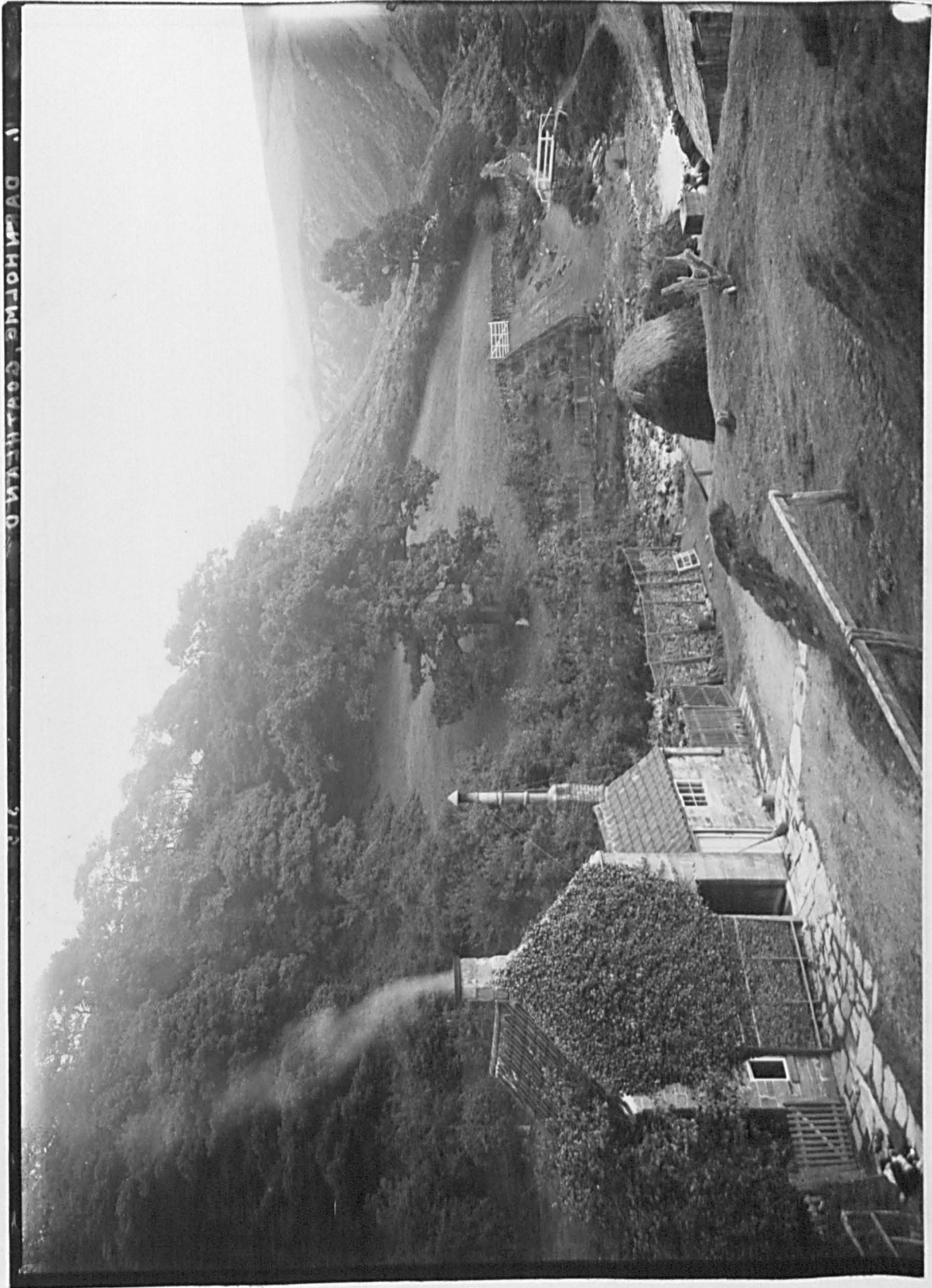
1514



14

DANIELITA

Plate 64



DAVID HOFMEYER'S COLLECTION

Plate 65



Plate 66

COMMONWEALTH

STATE OF MASSACHUSETTS



Plate 67



CASTLETON - 188 T. W.

940

Plate 68



THORPE FROM PARK GATE. T. W. 281.



Plate 70



1315

TSUO AIV ZHATIAT2

Plate 71



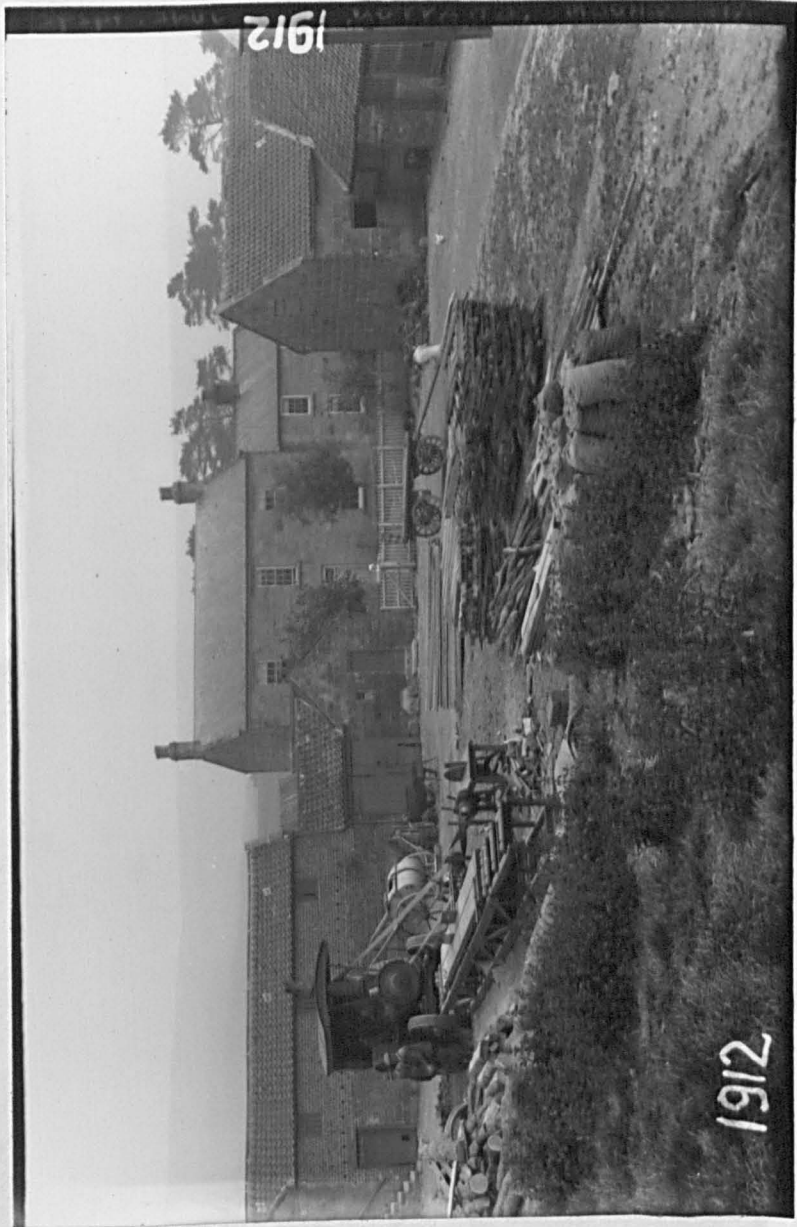


Plate 73





WHITBY. 98. T. W.

827



NO. 11 OCT. 13. 1944.

W.S.

Plate 76



Plate 77



Plate 78



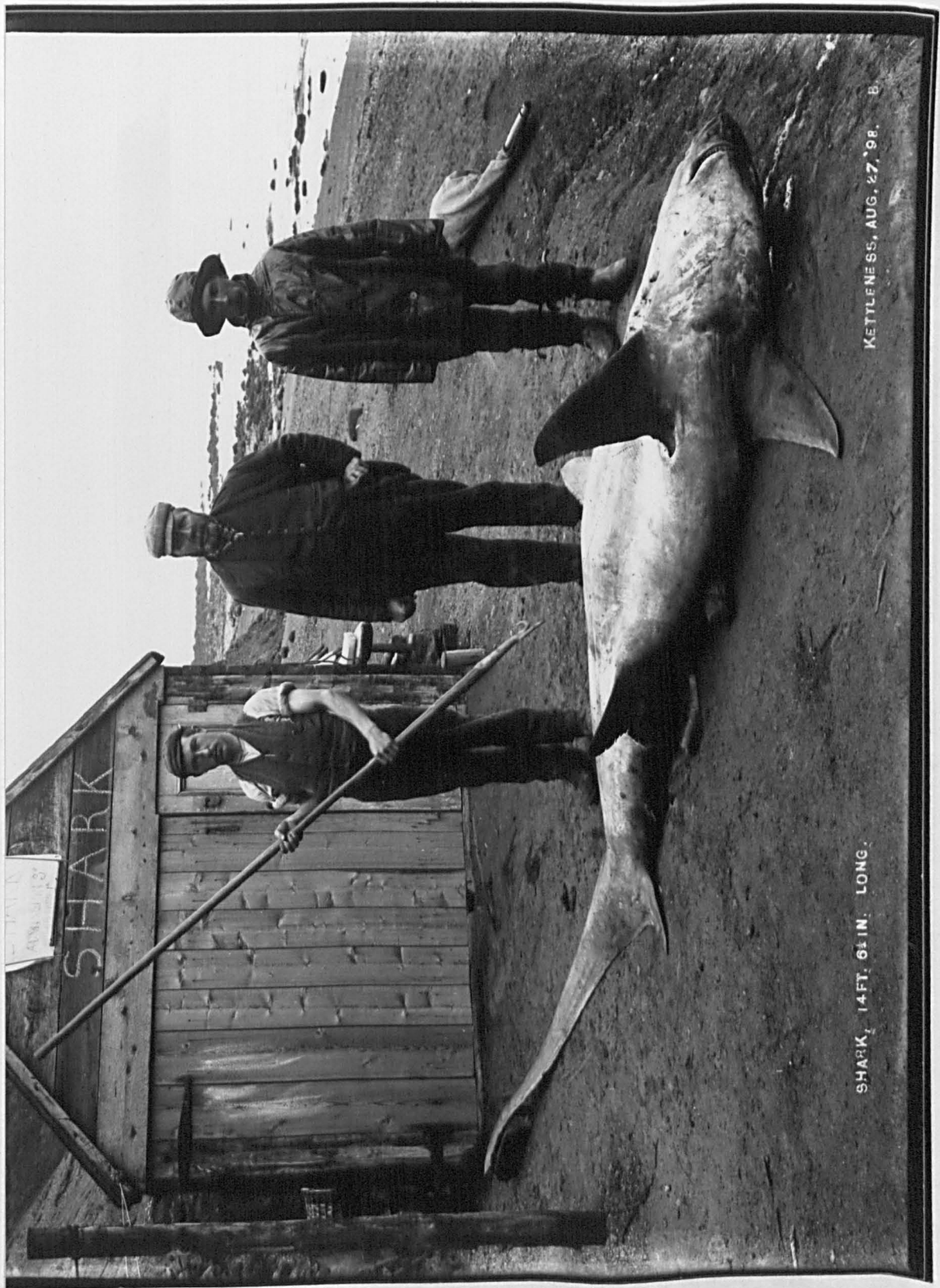
Plate 79



Plate 80



Plate 81



KETTLENESS, AUG. 27, '98. B.

SHARK, 14 FT., 6 IN. LONG.

Plate 82



Plate 83



Plate 84



Plate 85



Plate 86



Plate 87



Plate 88



Plate 89



STATHES 82 T. W.

Plate 90



Plate 91

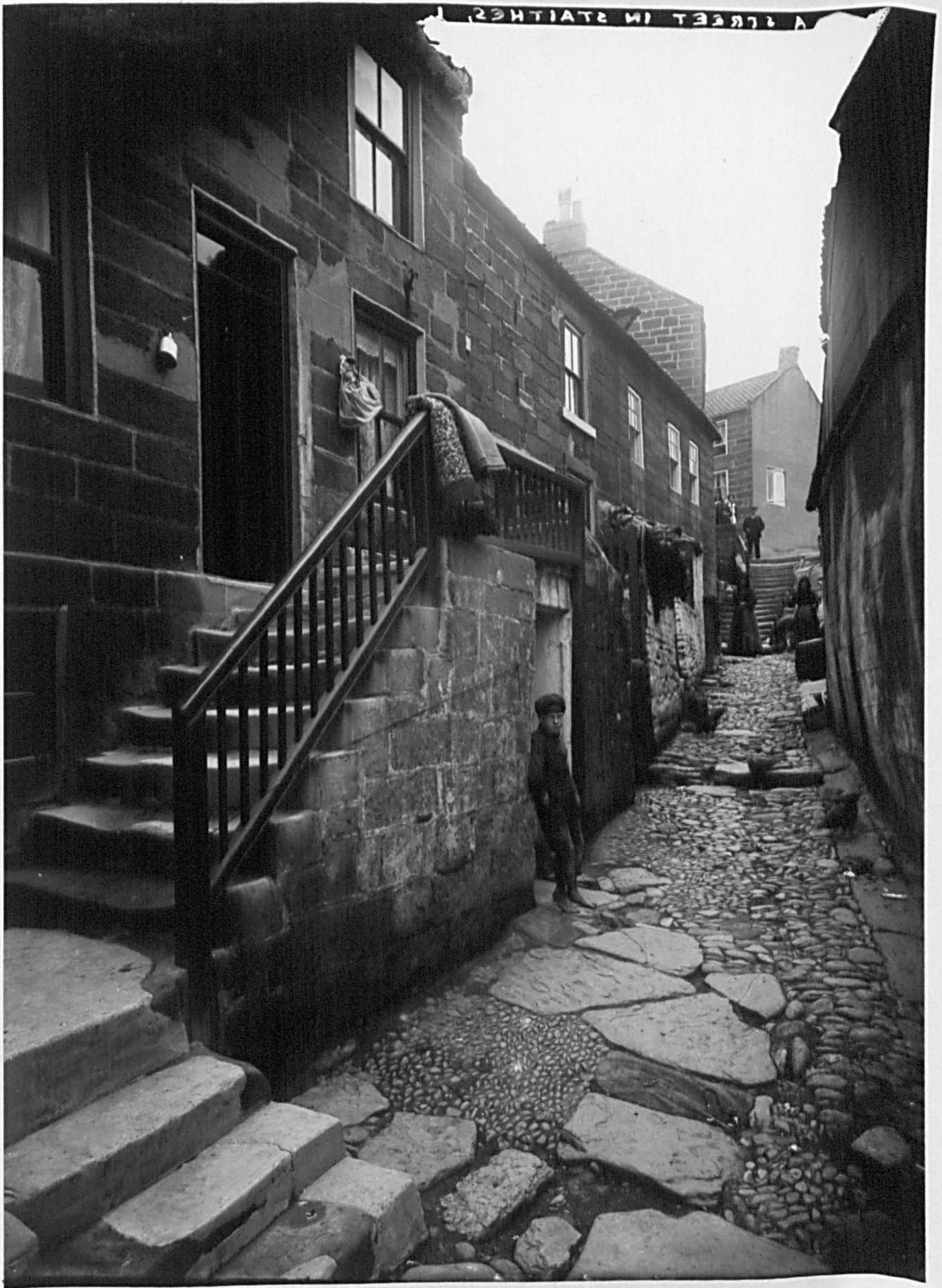


Plate 92



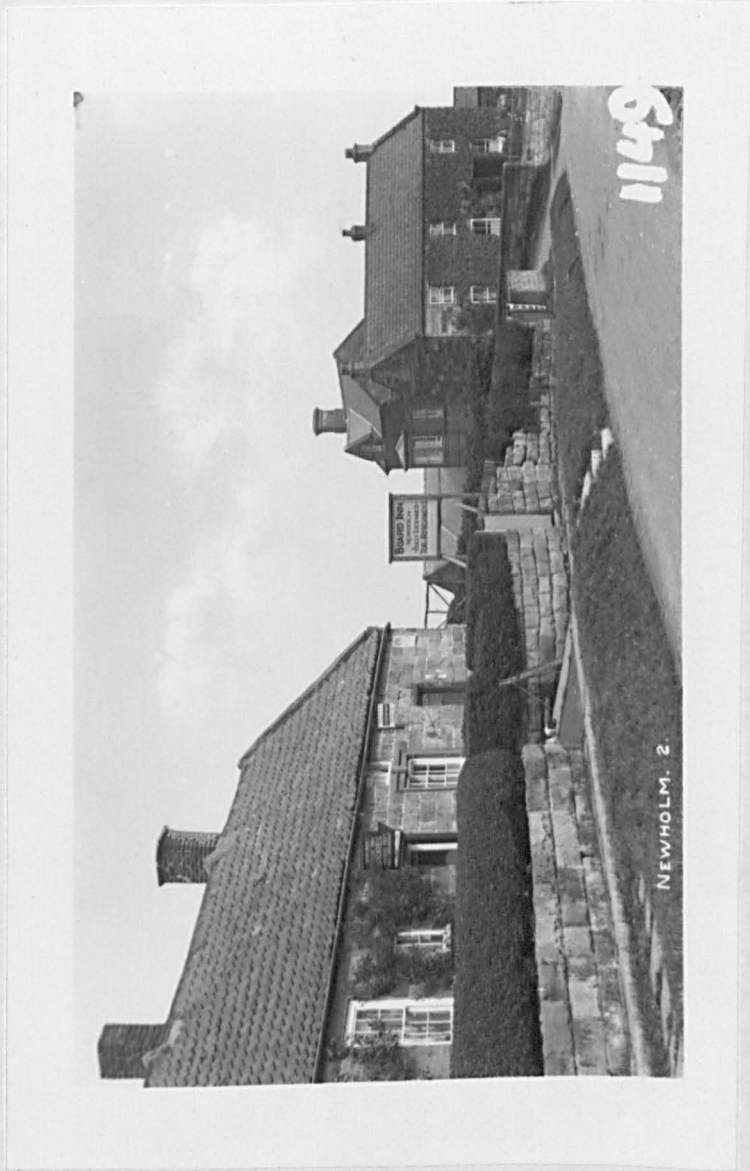


Plate 94

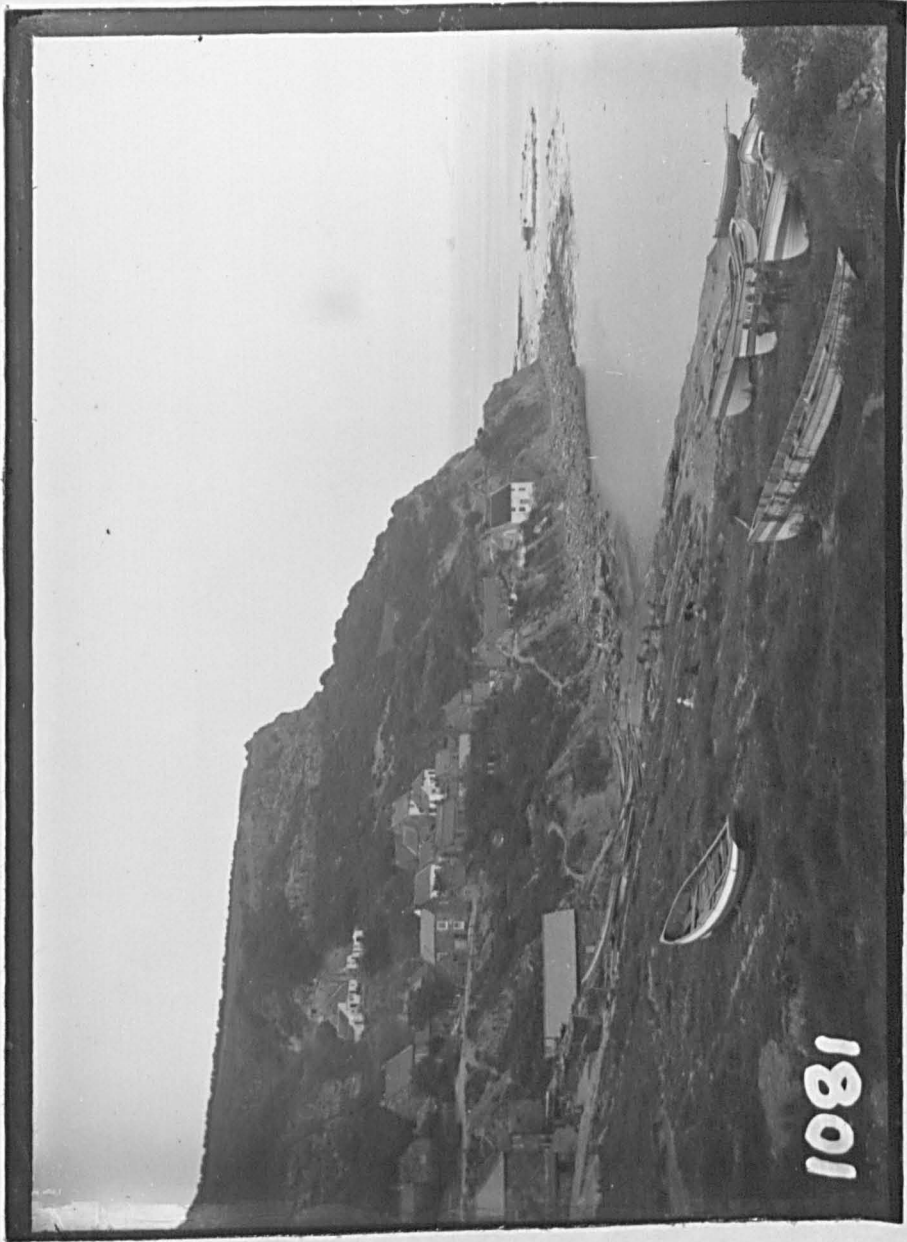




Plate 96



LYTHE CHURCH, MAY 30, 1911.



850

LYTHE CHURCH, MAY 28, 1911.

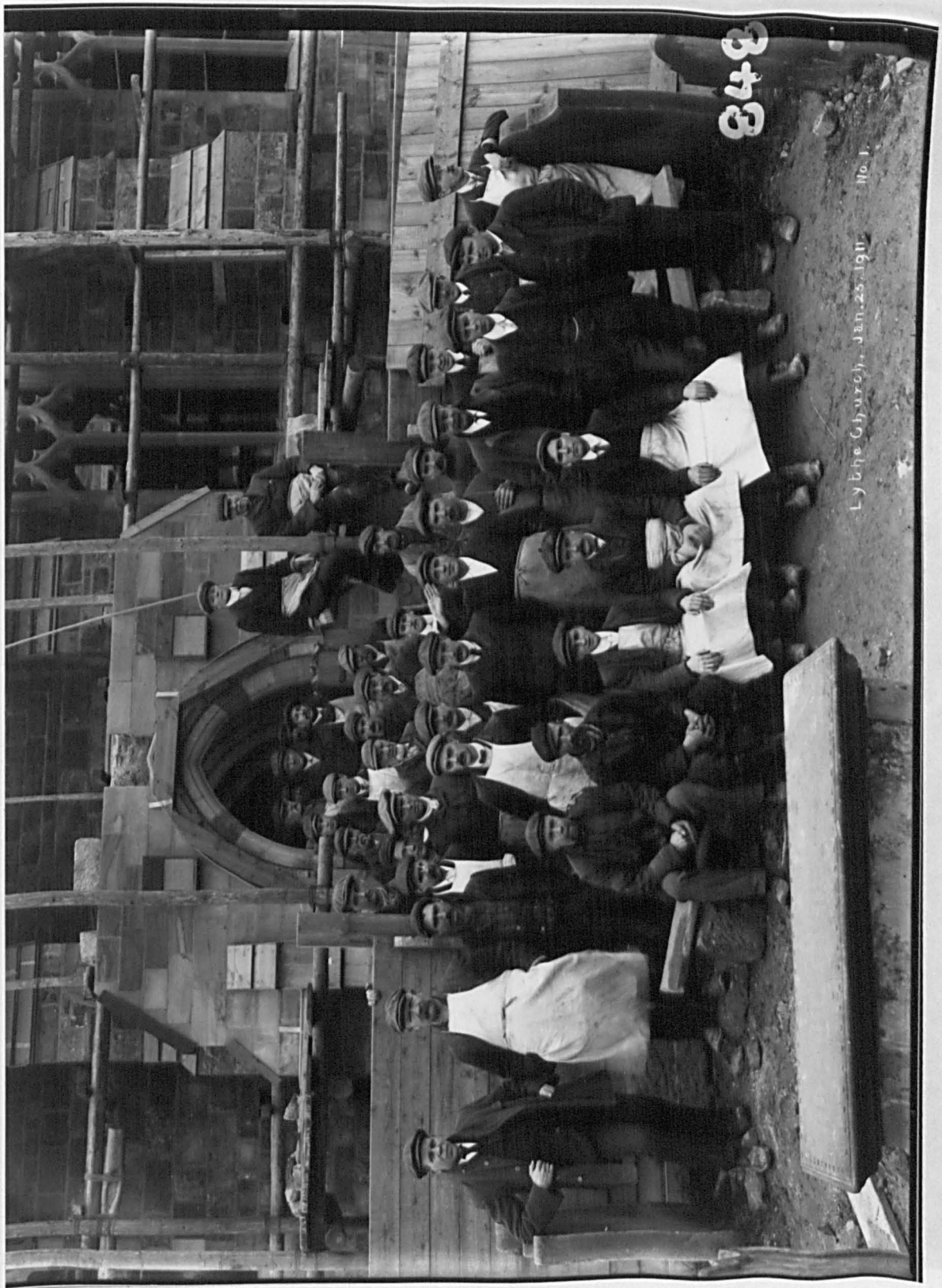


Plate 99



Plate 100

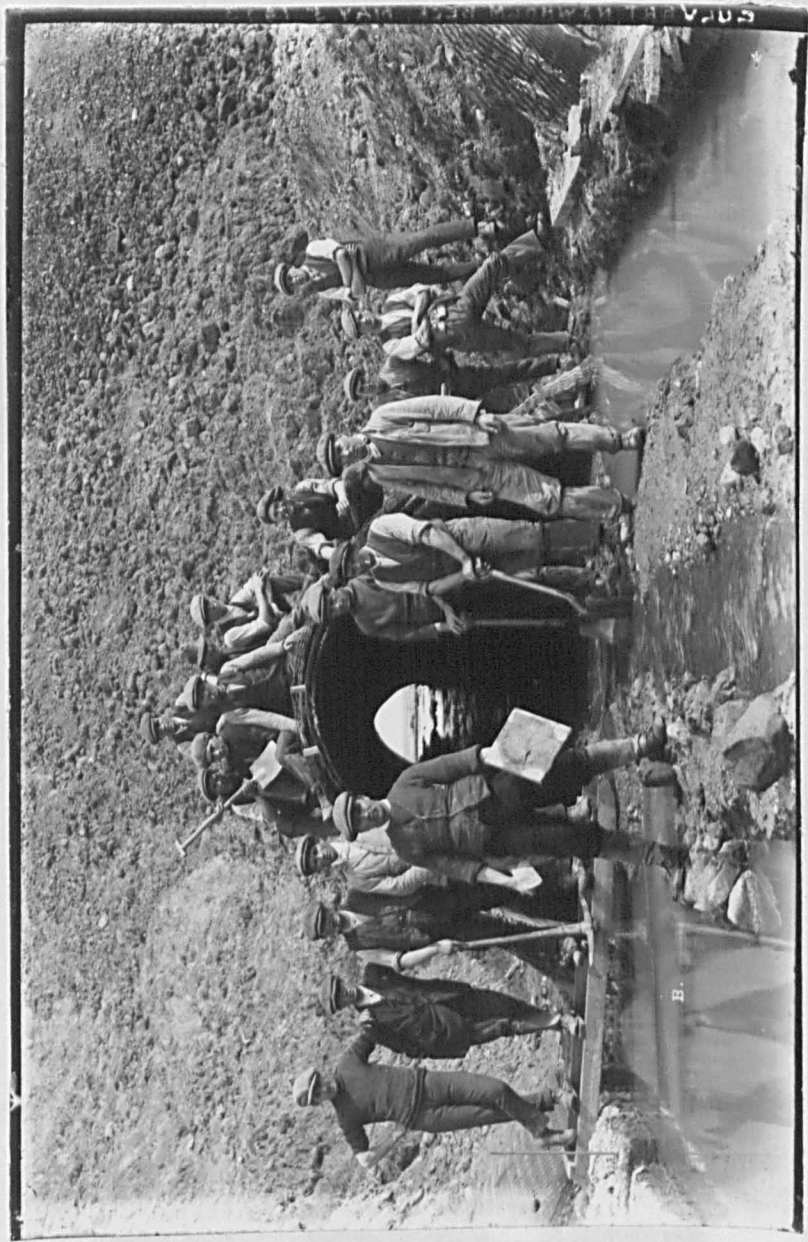


Plate 101



Plate 102



426



Plate 104



Plate 105

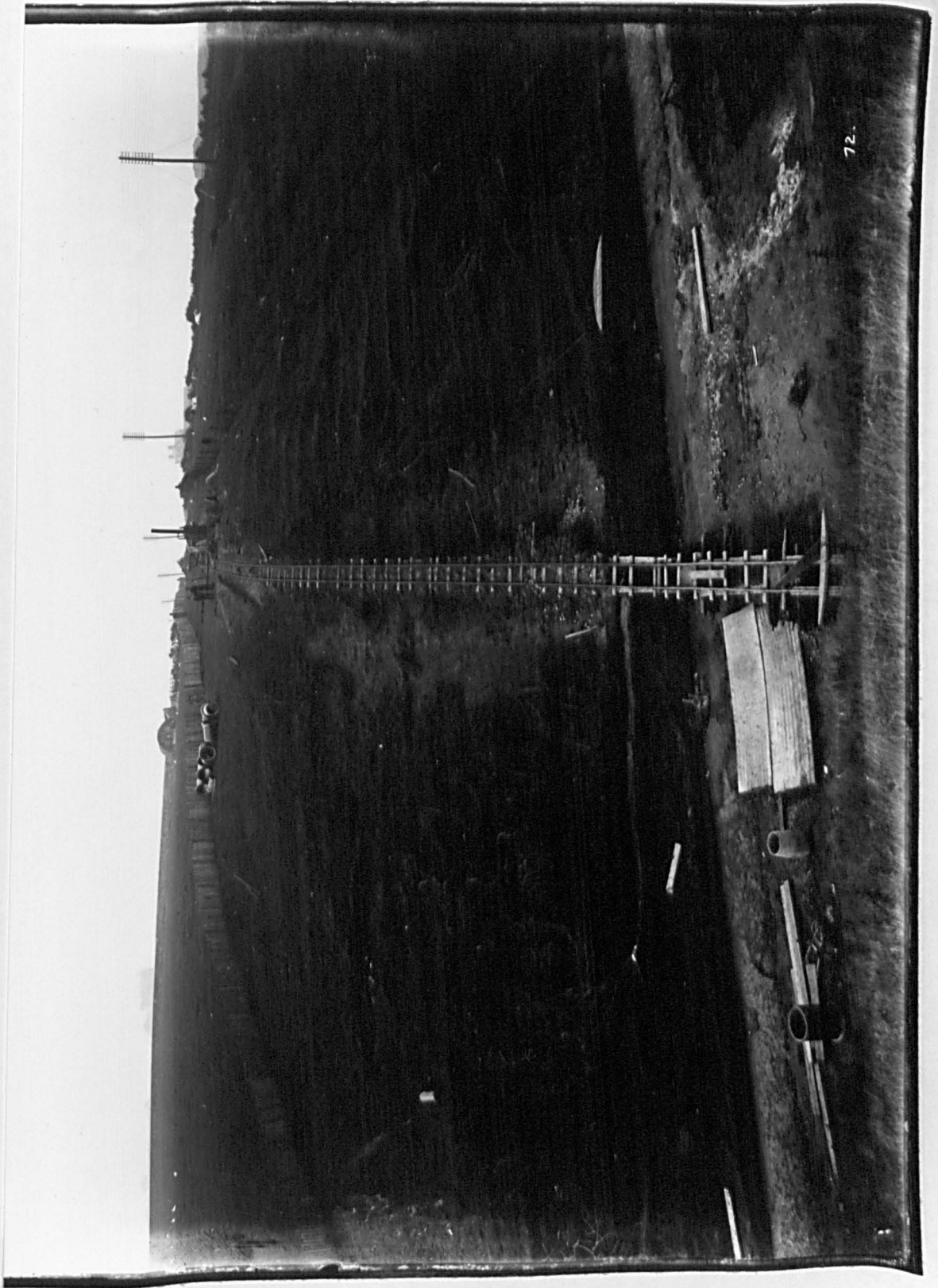
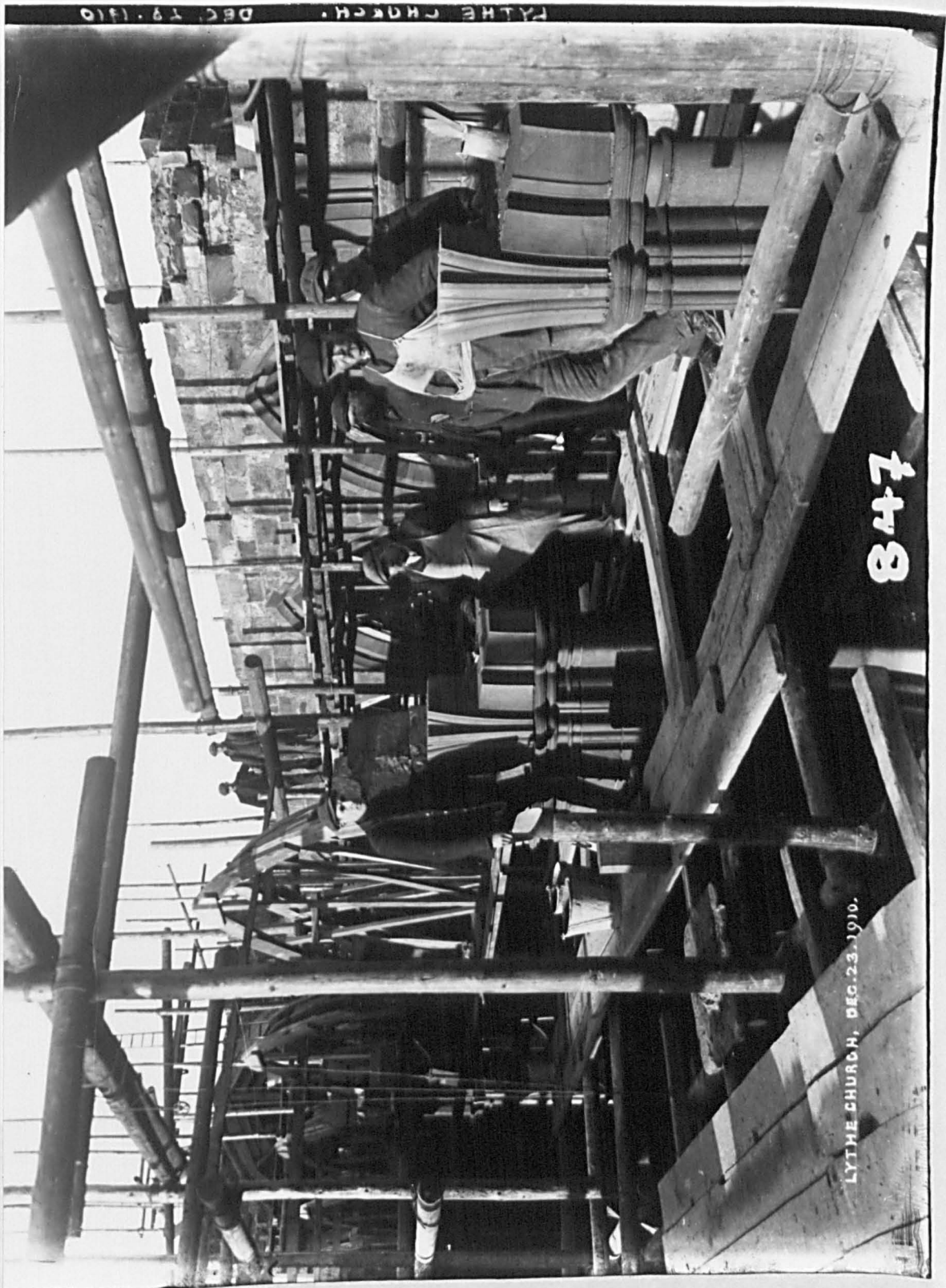


Plate 106



NEAR LYTHER, FEB. 13, 1911.

422



LYTNE CHURCH. DEC. 19. 1910.

847

LYTNE CHURCH, DEC. 23. 1910.

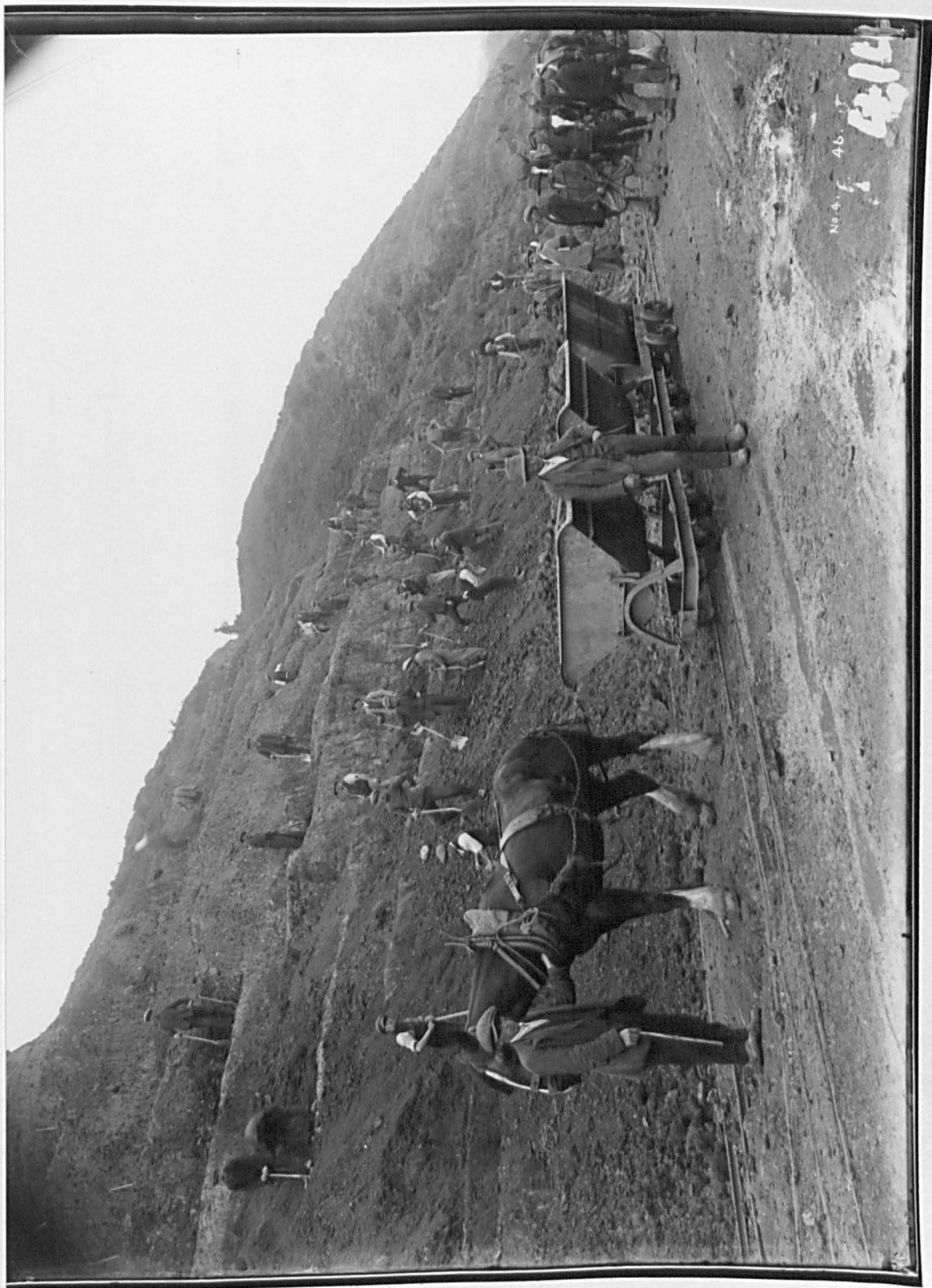


Plate 109

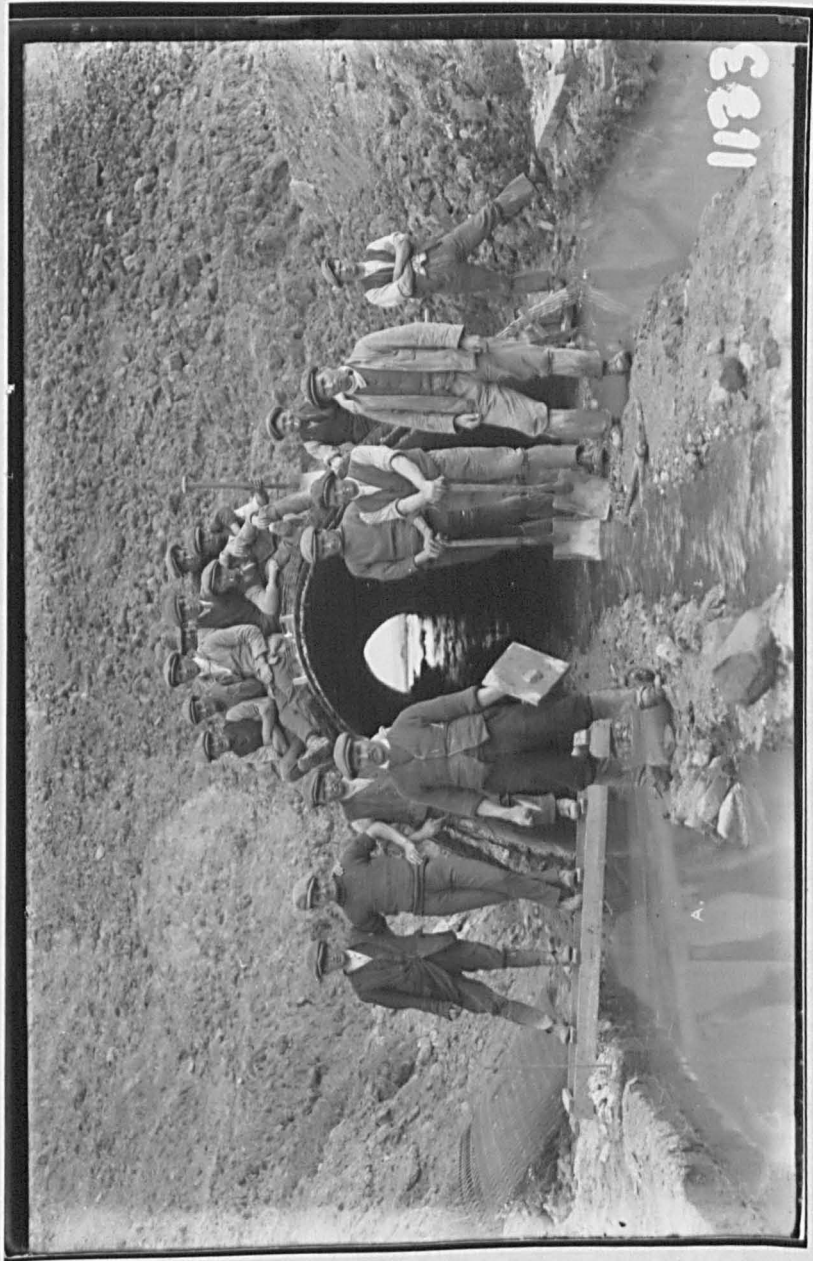


Plate 110

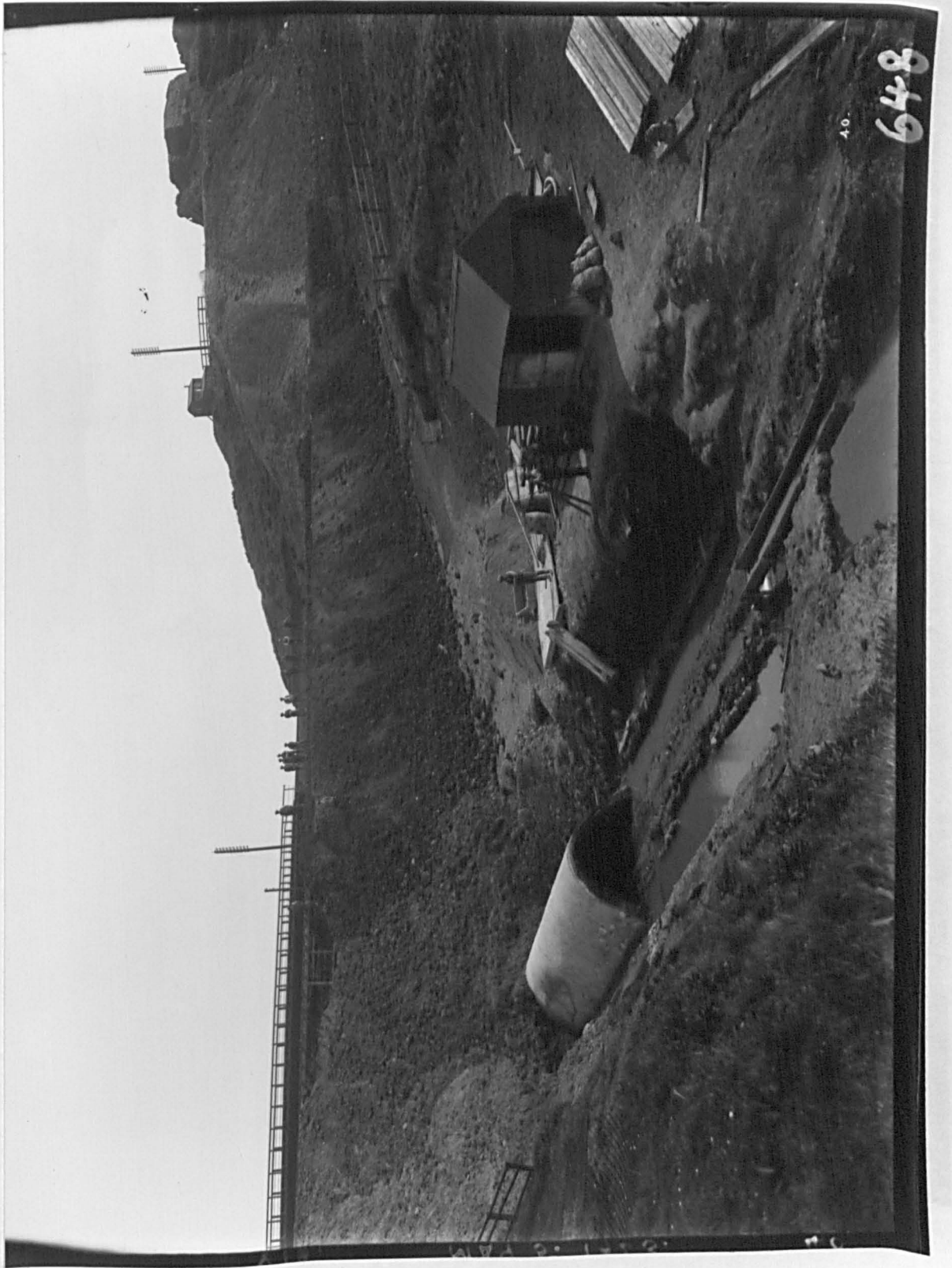


Plate 111



Plate 112

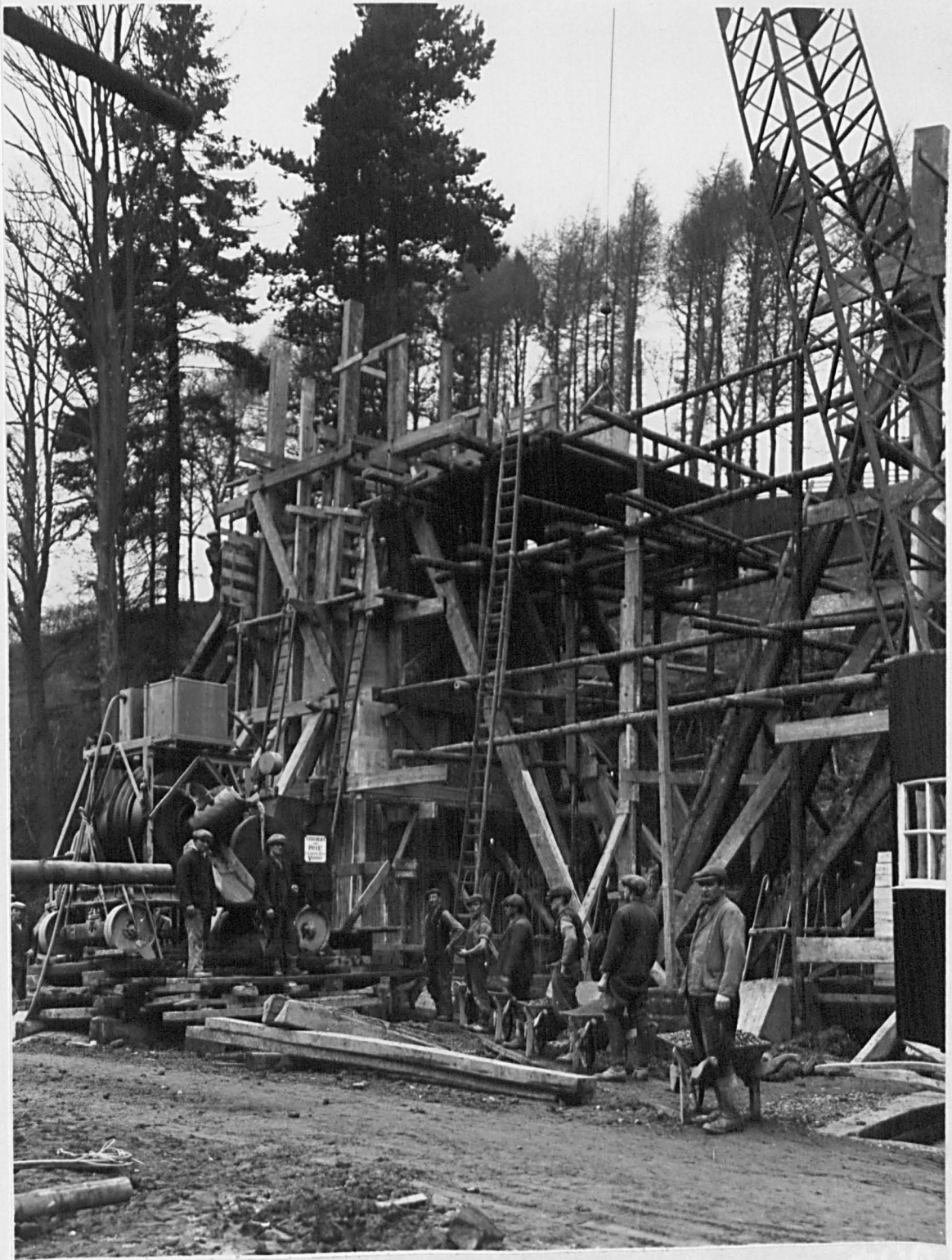


Plate 113



Plate 114



704

Plate 115

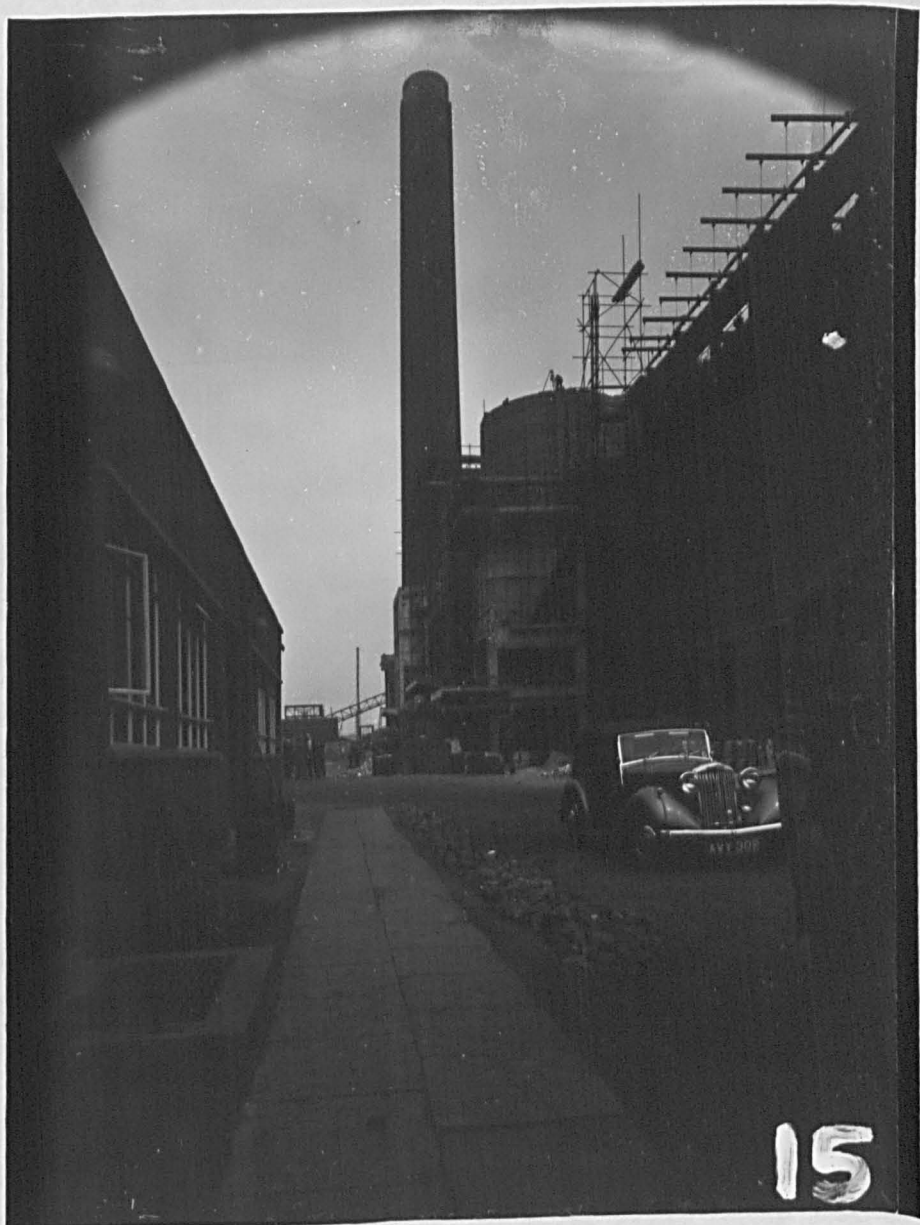


Plate 116



117

Plate 117



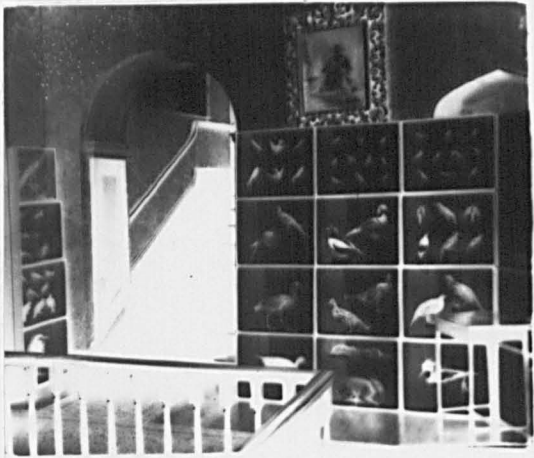
2101

B-2-09.

Plate 118



Plate 119





MULGRAVE CASTLE, T. W.

17. 7. 96. B.

2093

Plate 121



Mulgrave Castle, Sept. 26, 1912. (6)

2116

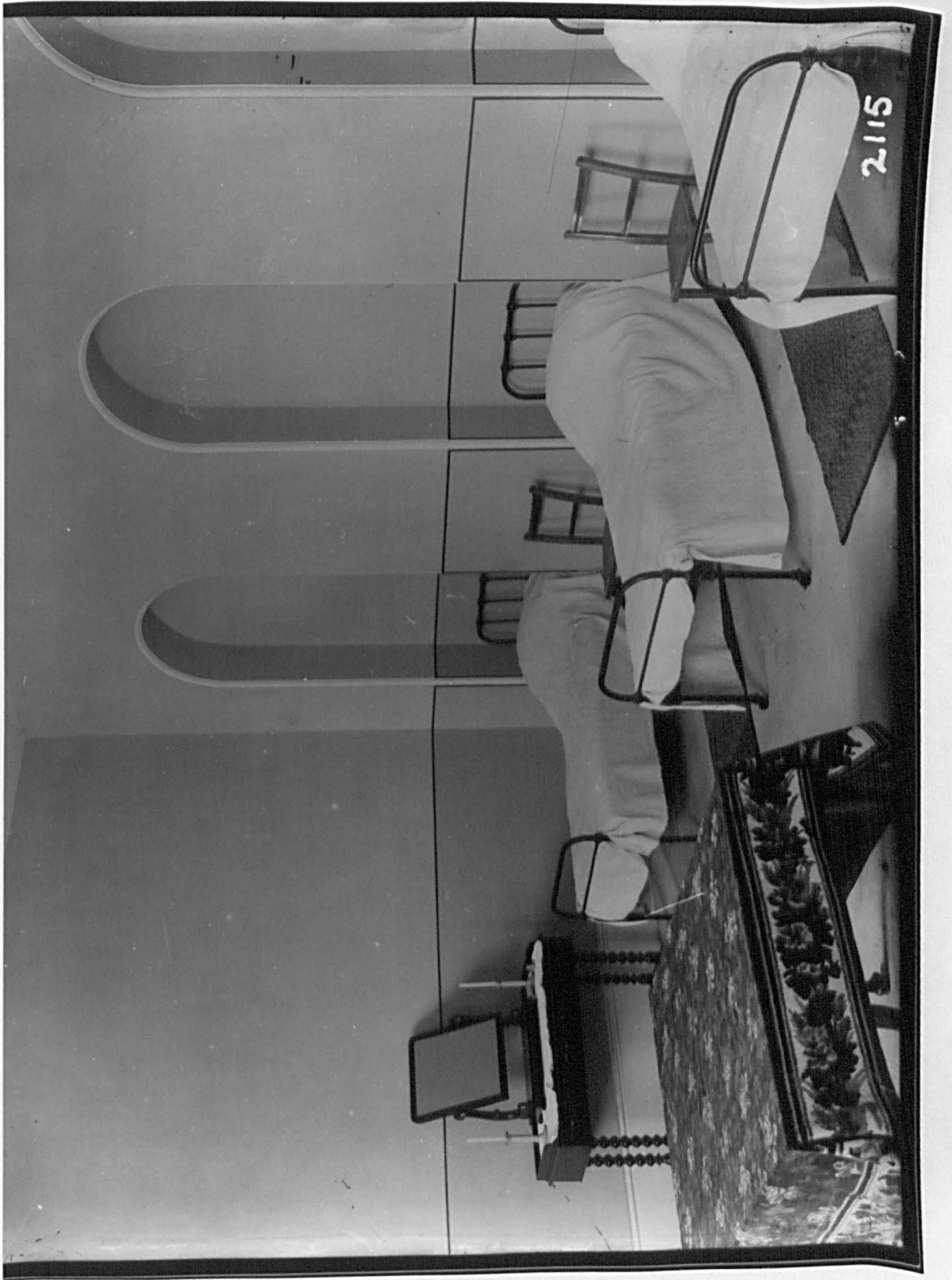


Plate 123



Plate 124

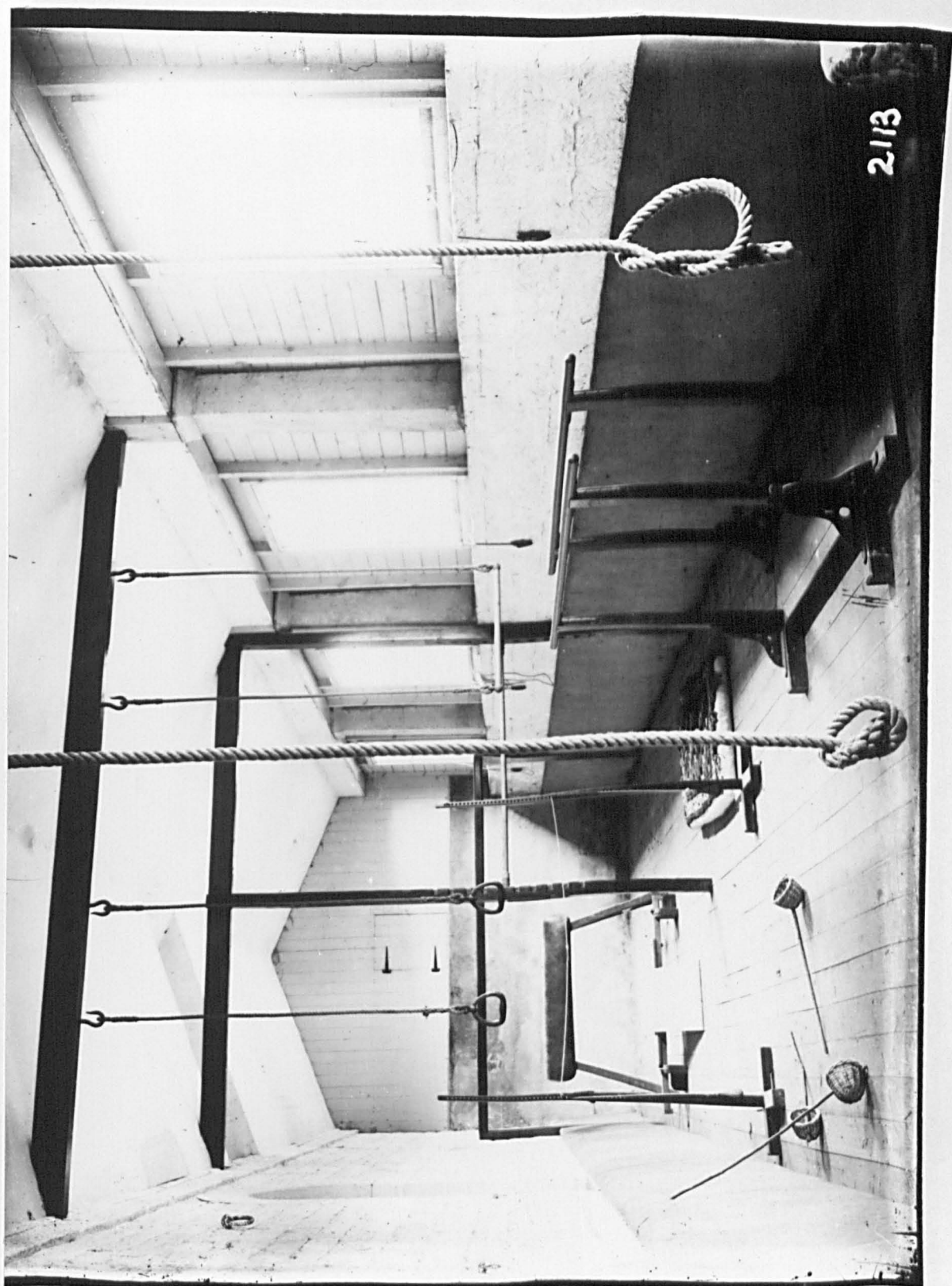


Plate 125



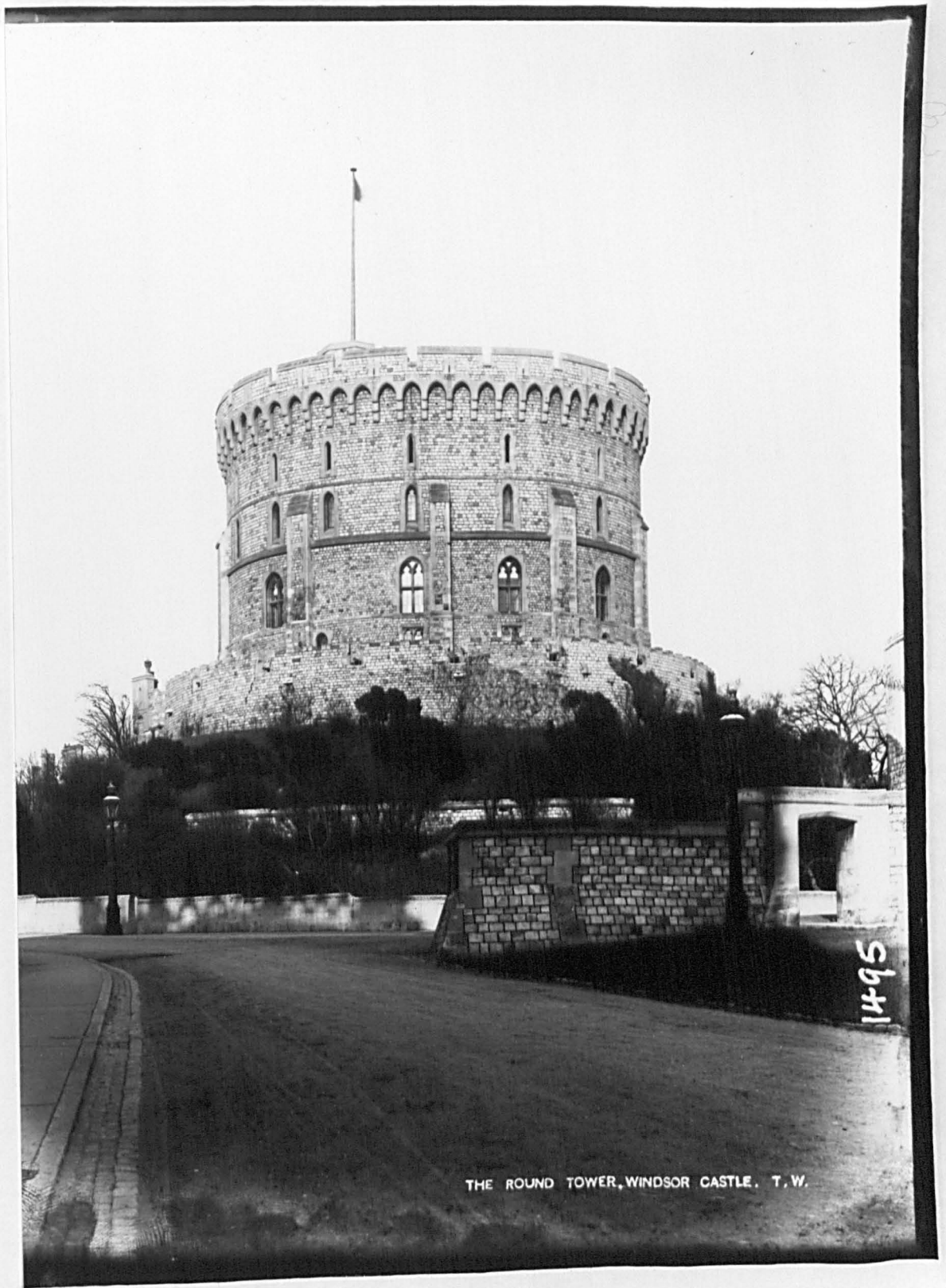
Plate 126



QUEEN CHARLOTTE'S MON.

ST. GEORGE'S CHAPEL, WINDSOR. T. W.

Plate 127



THE ROUND TOWER, WINDSOR CASTLE. T. W.



ST. GEORGE'S CHAPEL, WINDSOR. SOUTH. T. W.



Plate 130



1499

MANAGER LITTLE COOPER T. W.

Plate 131



MJILGRAVE HOUSE, WINDSOR. B.



UETBORPE MODA SEPT. 1910.

1.

2096



1869
Pos.

AMERICAN ANTIQUARIAN SOCIETY
COLLEGE ST. - BOSTON

Plate 134



Plate 135



ВООЛ КИНО ЗИТУ

284

Plate 136



Plate 137



Plate 138



WYNVARD PARK, 142. T. W.

121



WYNARD PARK, 145, T. W.

130



Plate 141



Plate 142

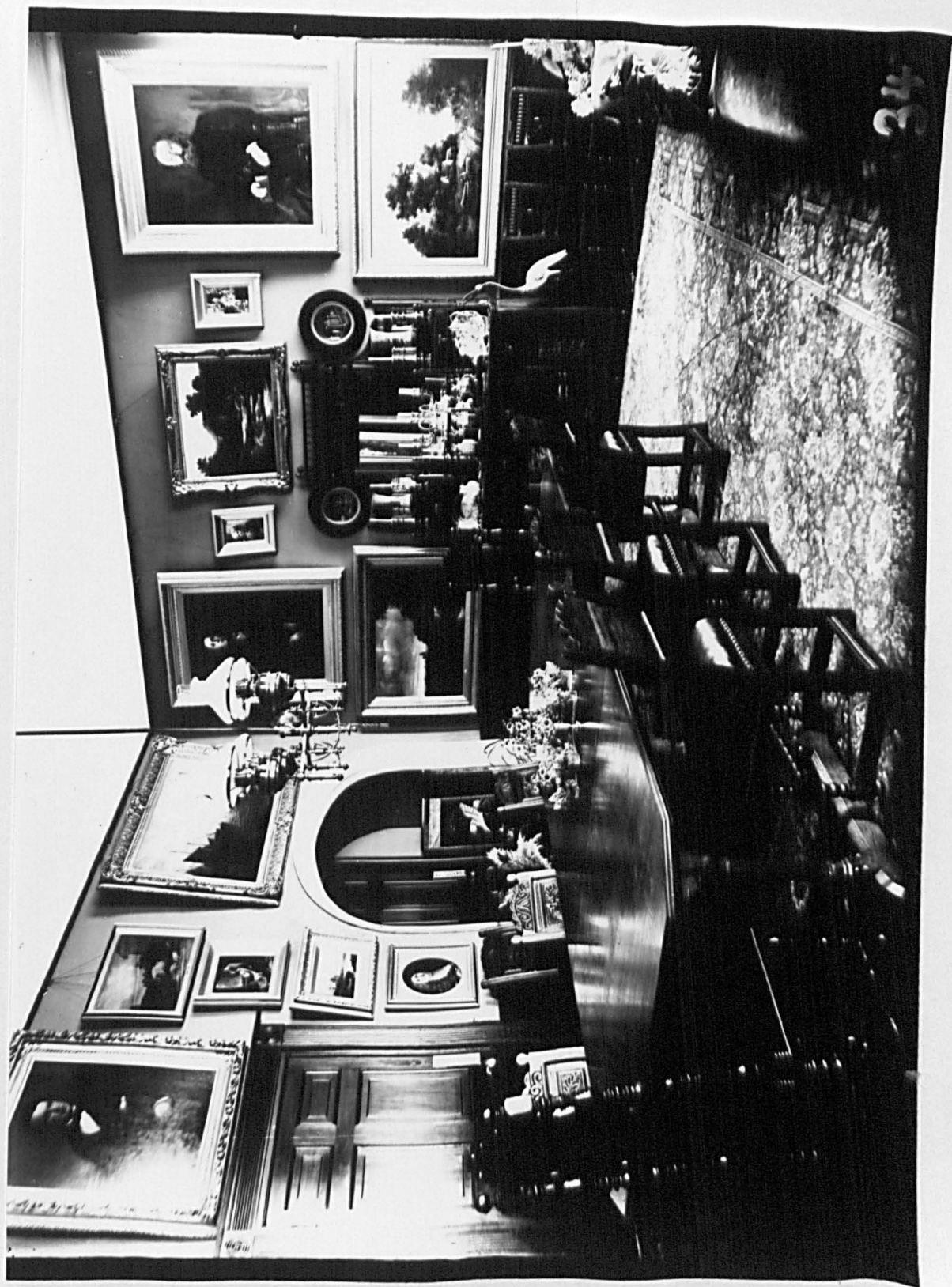


Plate 143

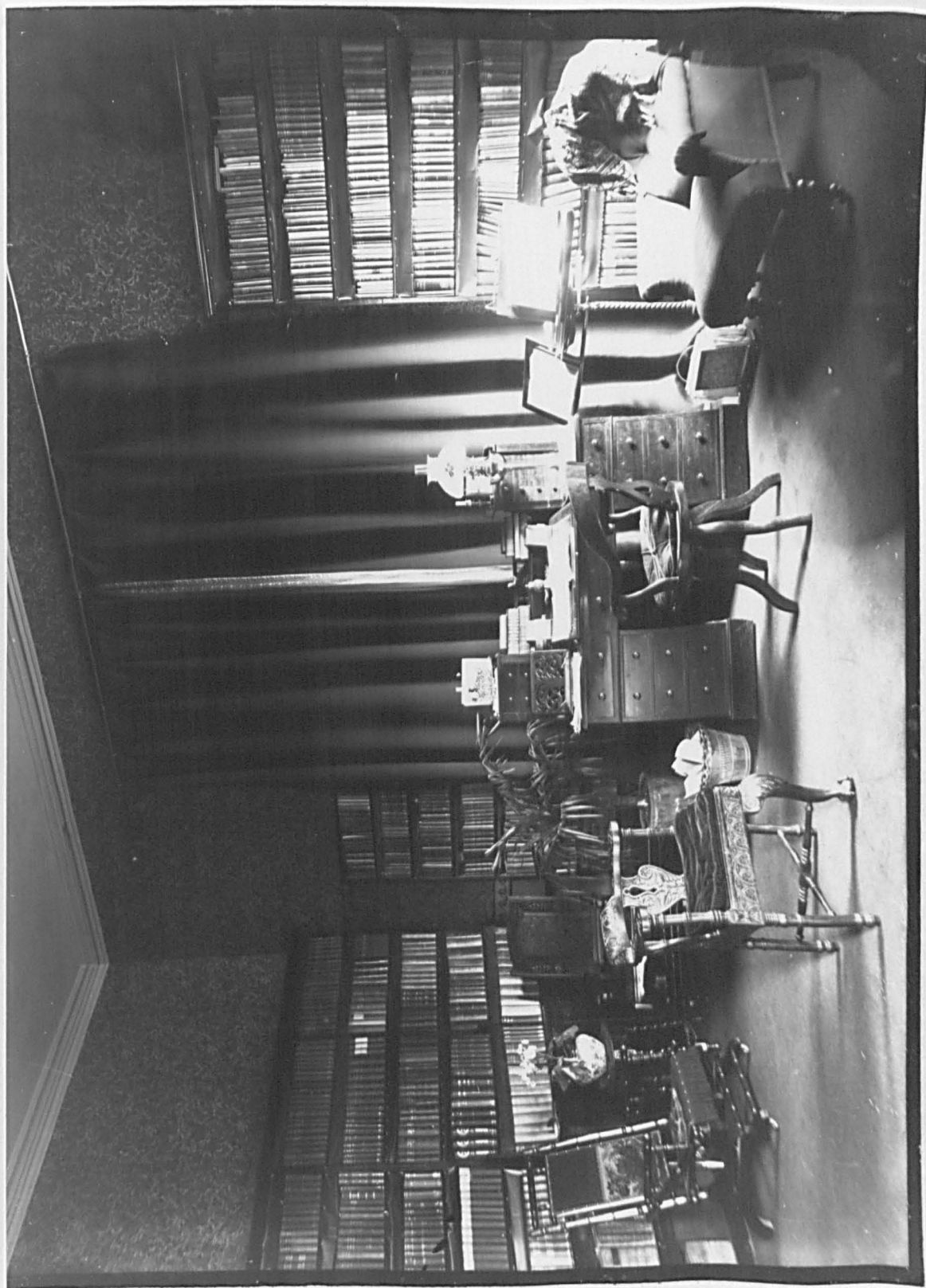


Plate 144



Plate 145



Plate 146



Plate 147



Plate 148

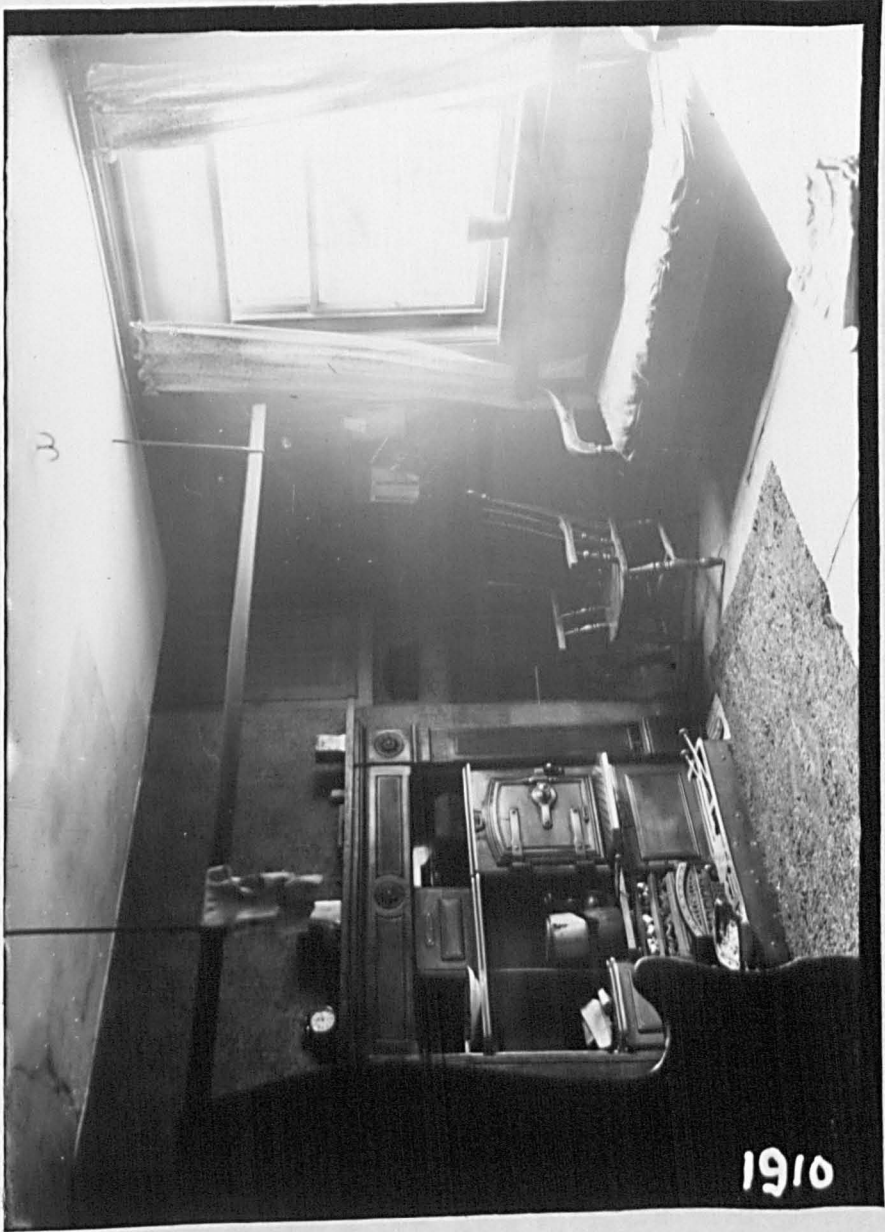


Plate 149



Plate 150

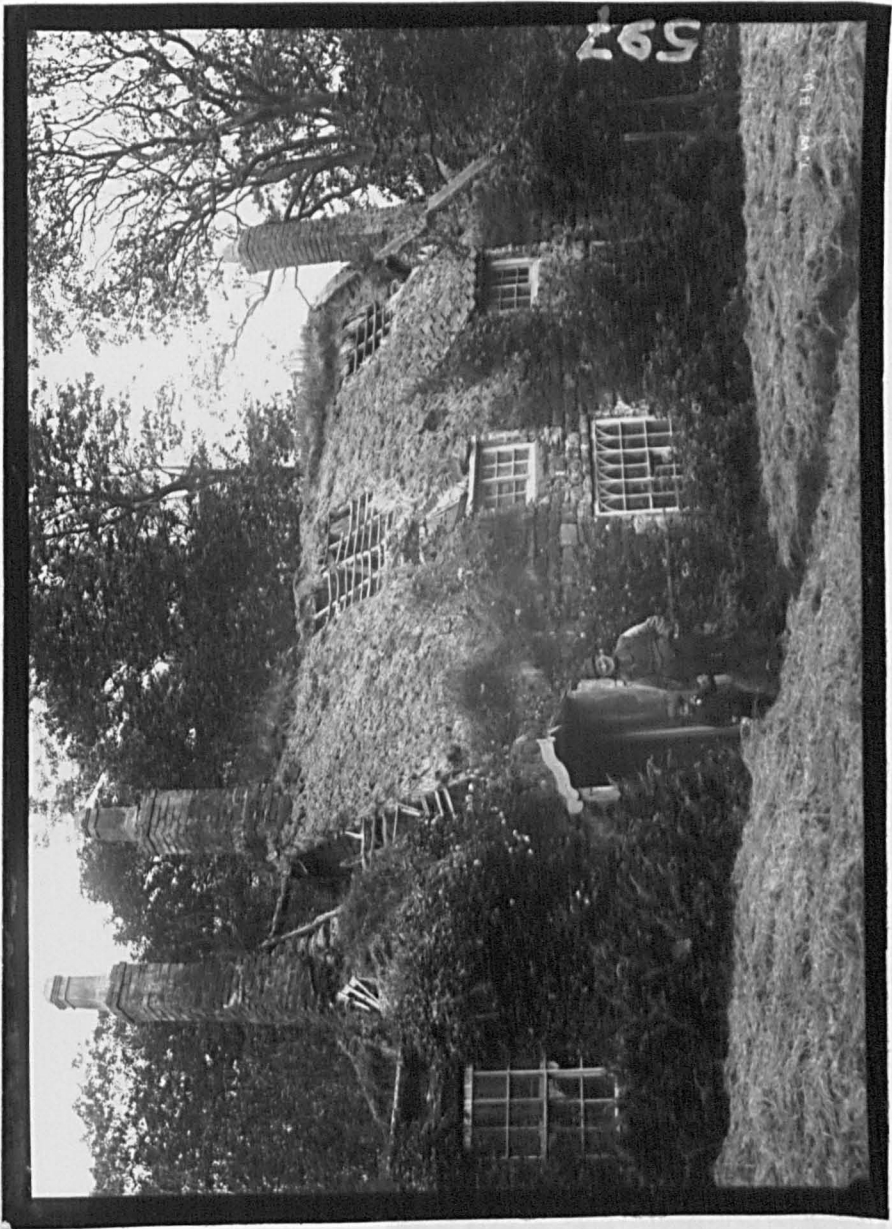


Plate 151

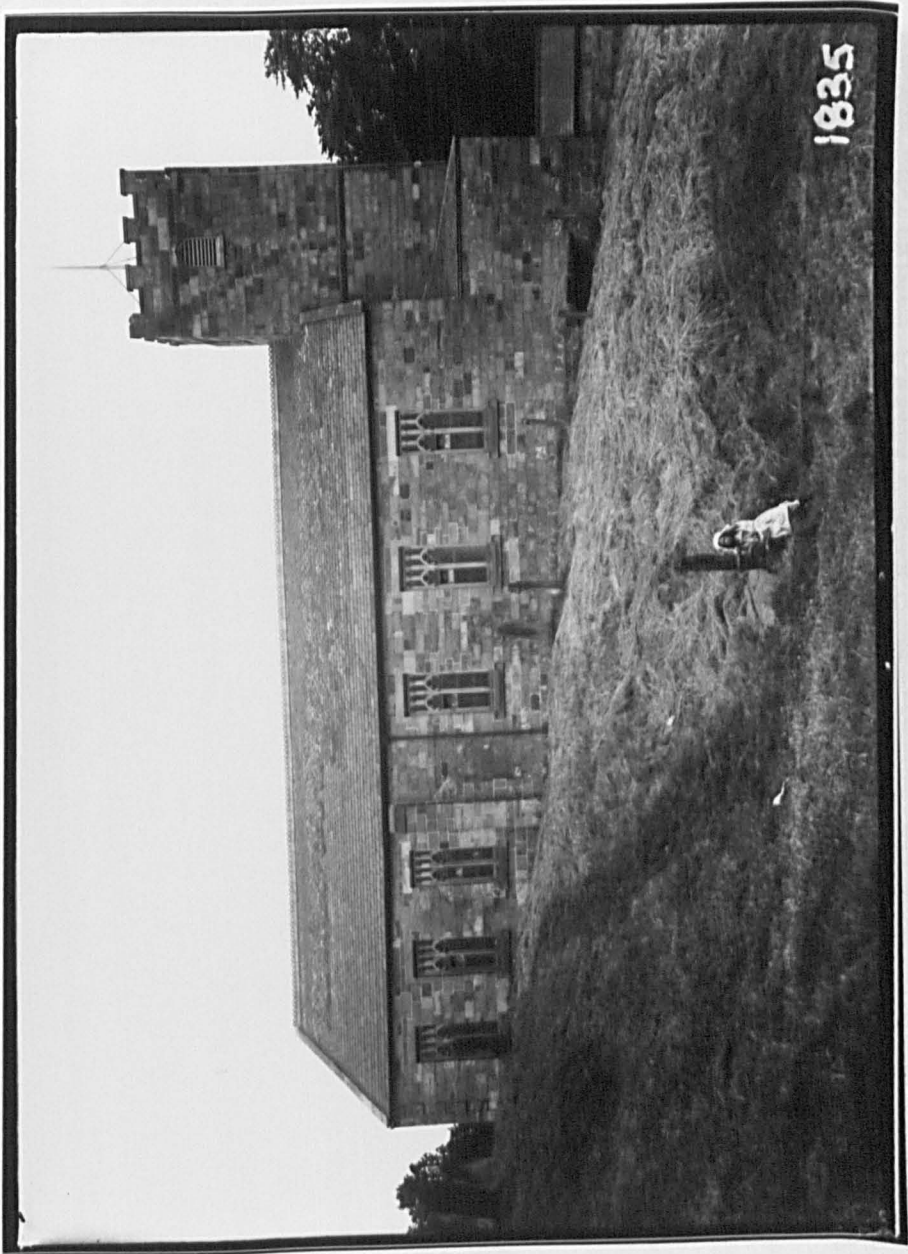


Plate 152



Plate 153



Plate 154



Plate 155

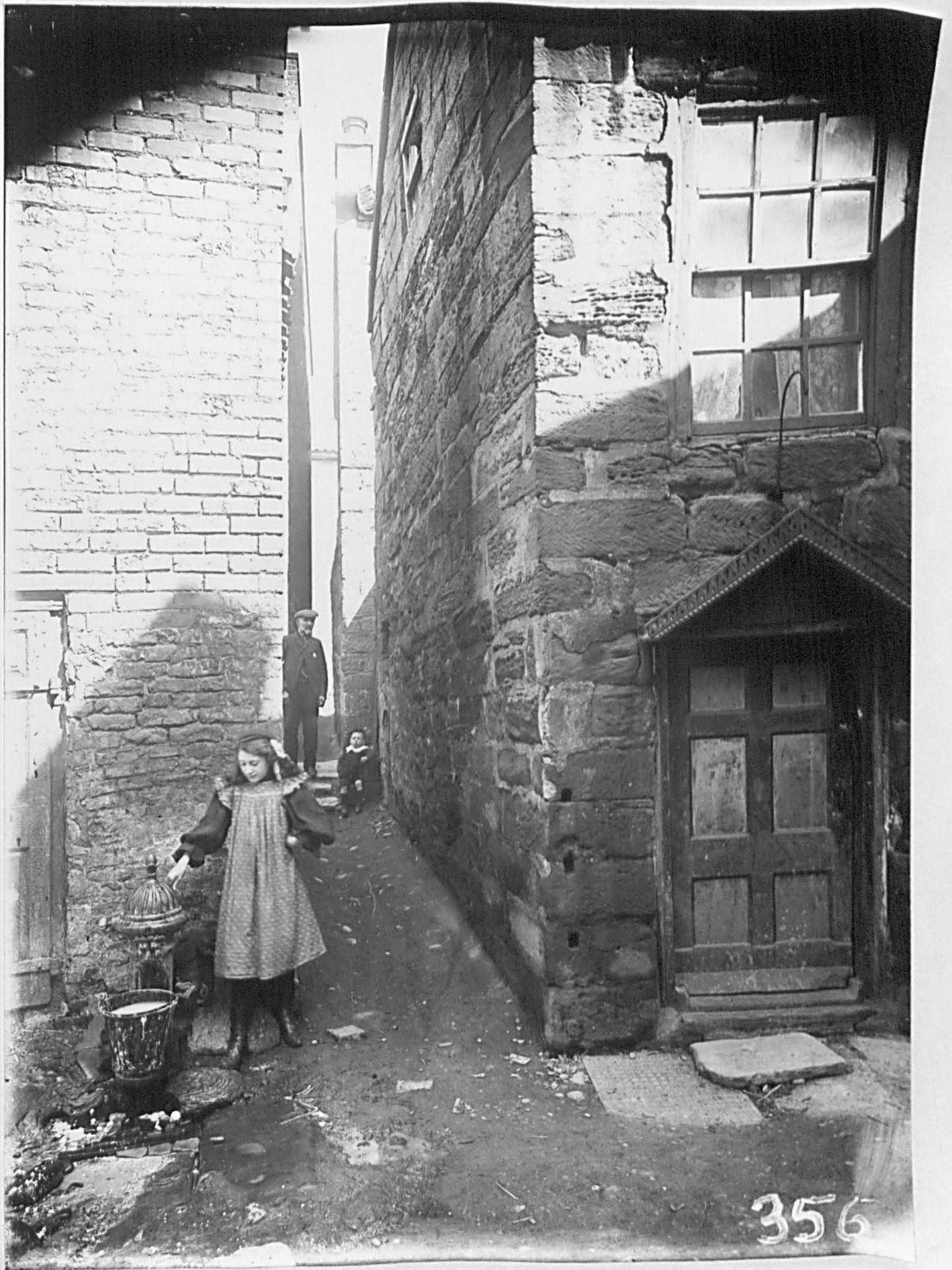


Plate 156



Plate 157



Plate 158



Plate 159



Plate 160



Plate 161



Plate 162



Plate 163



Plate 164

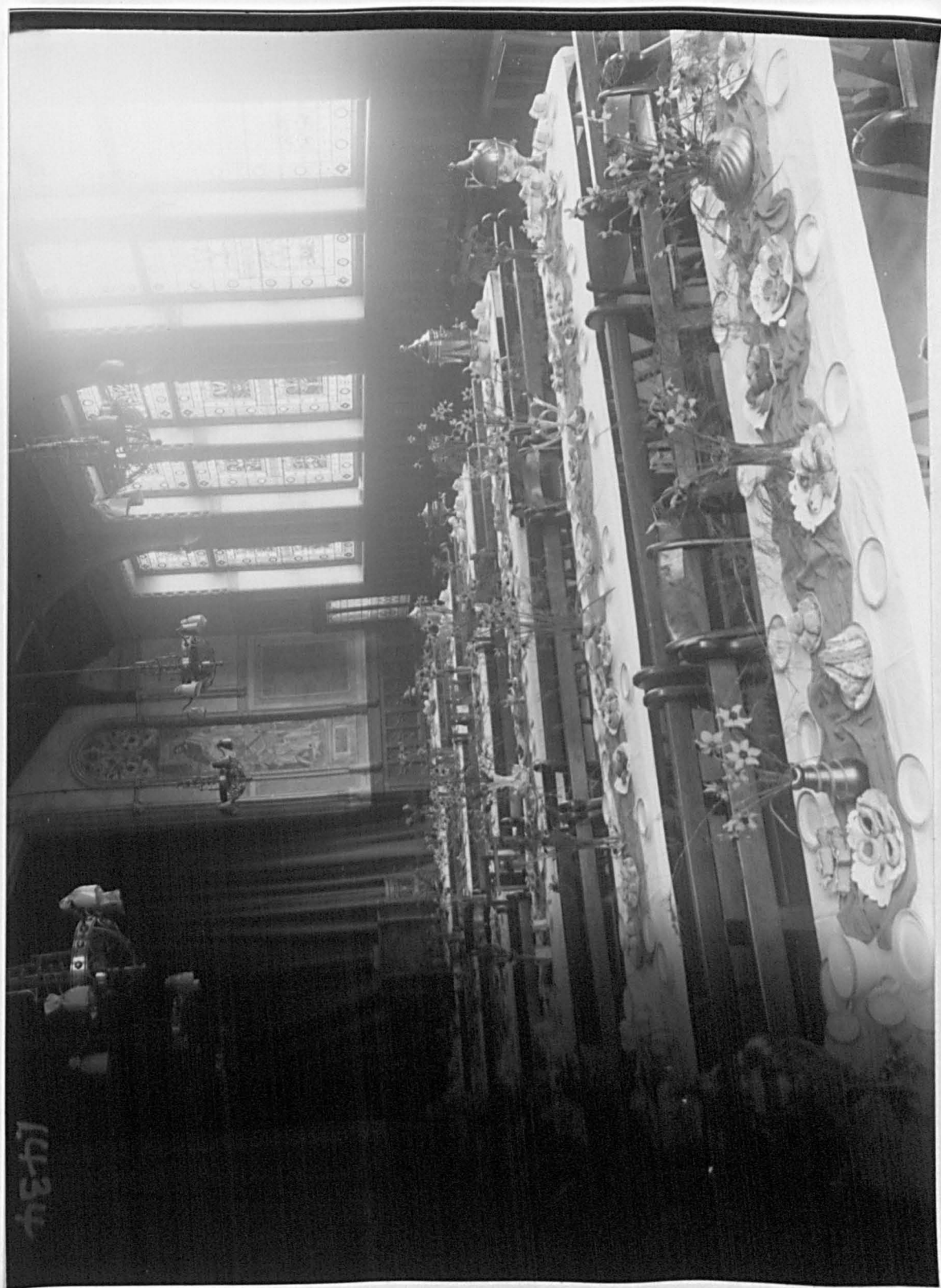


Plate 165



1433

Plate 166



1434

Plate 167



Plate 168



Plate 169



Plate 170



Plate 171

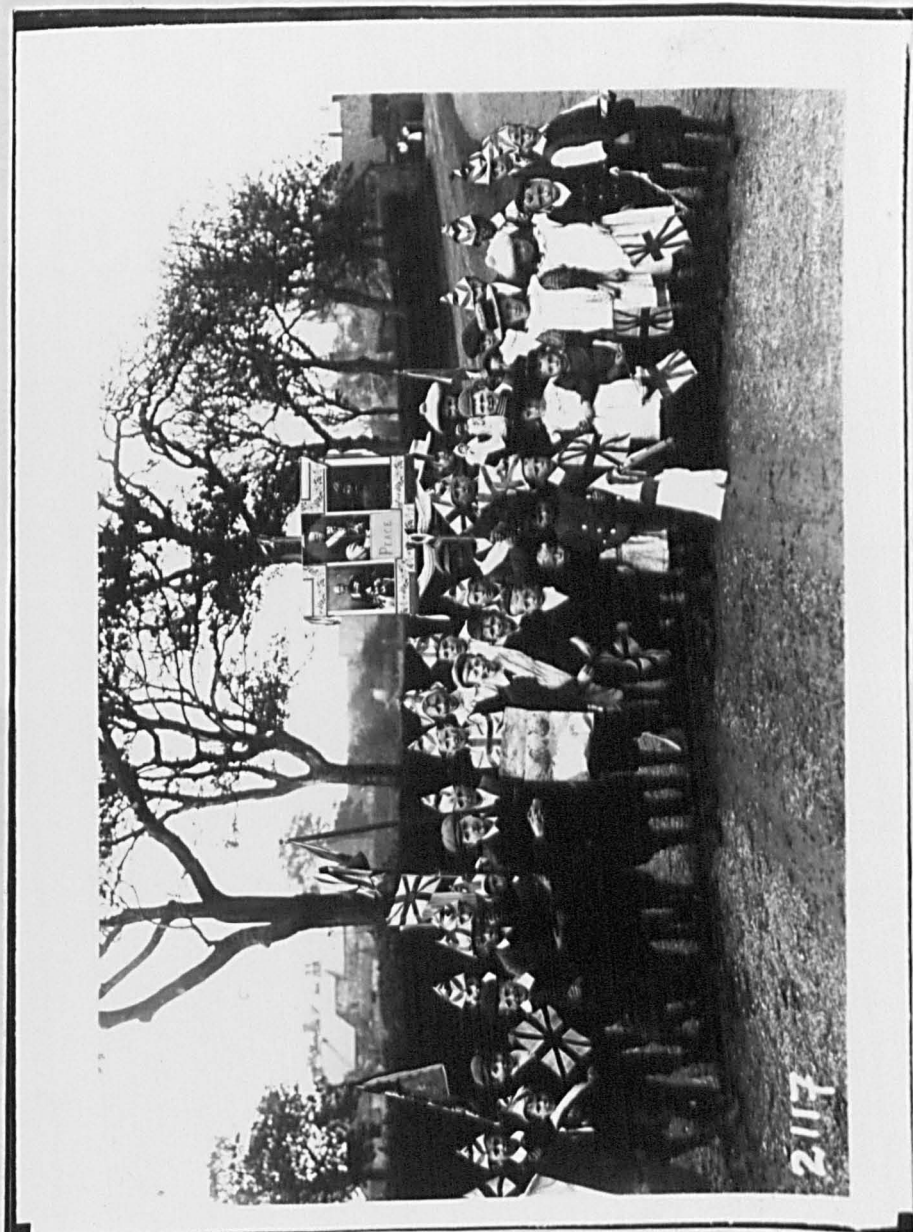


Plate 172



Plate 173



Plate 174



Eystrow Sandseid May 20th 1910

926

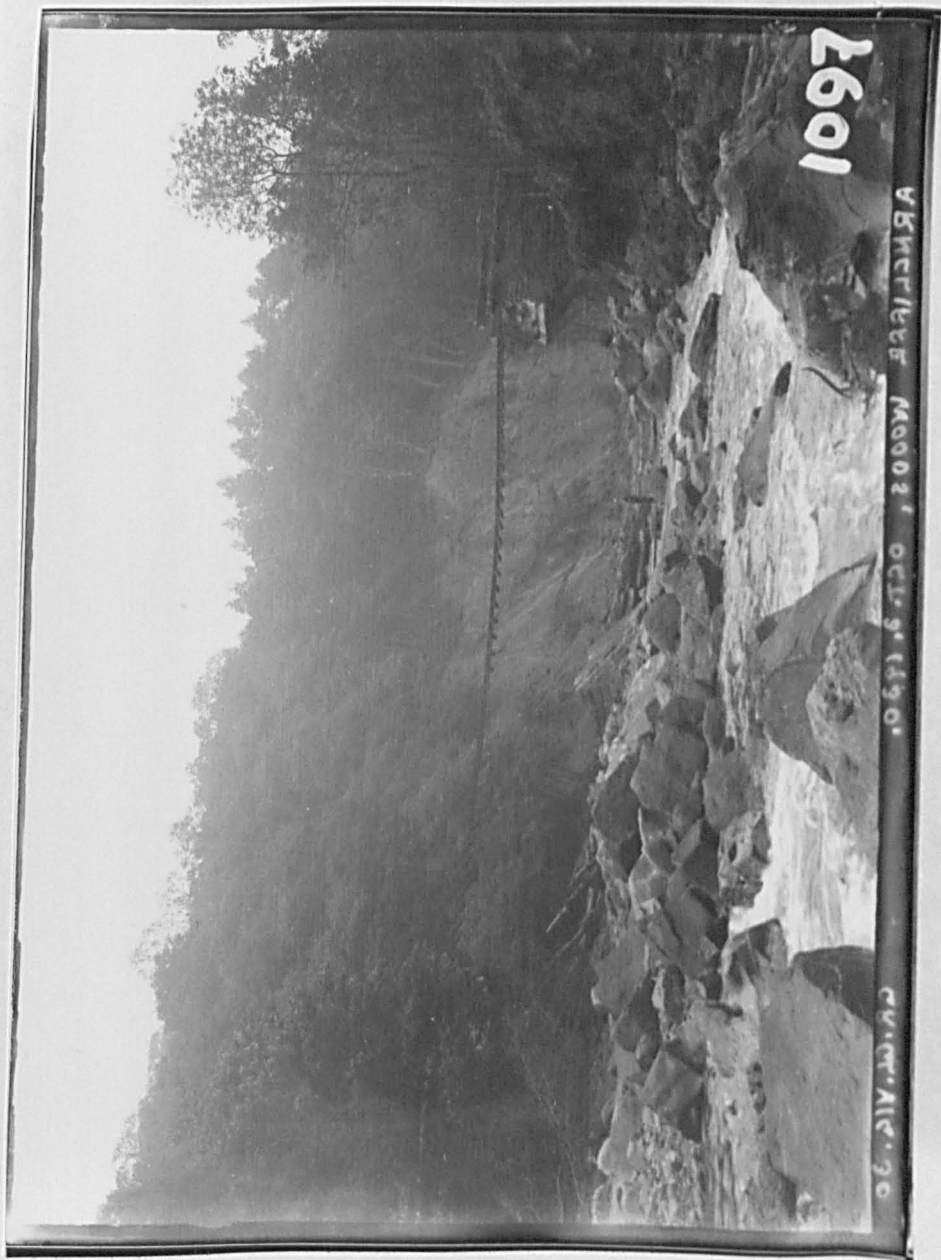


Plate 176

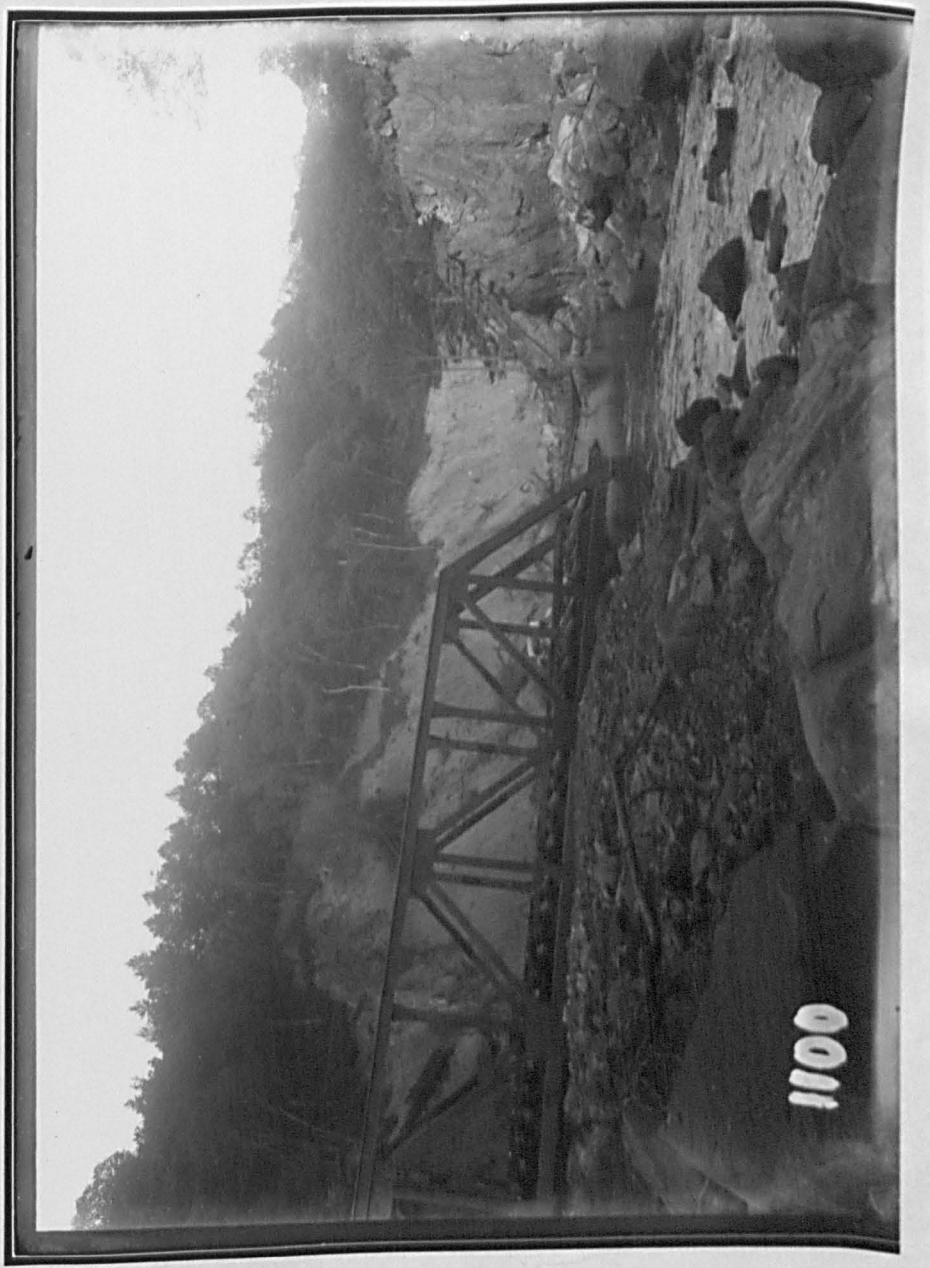
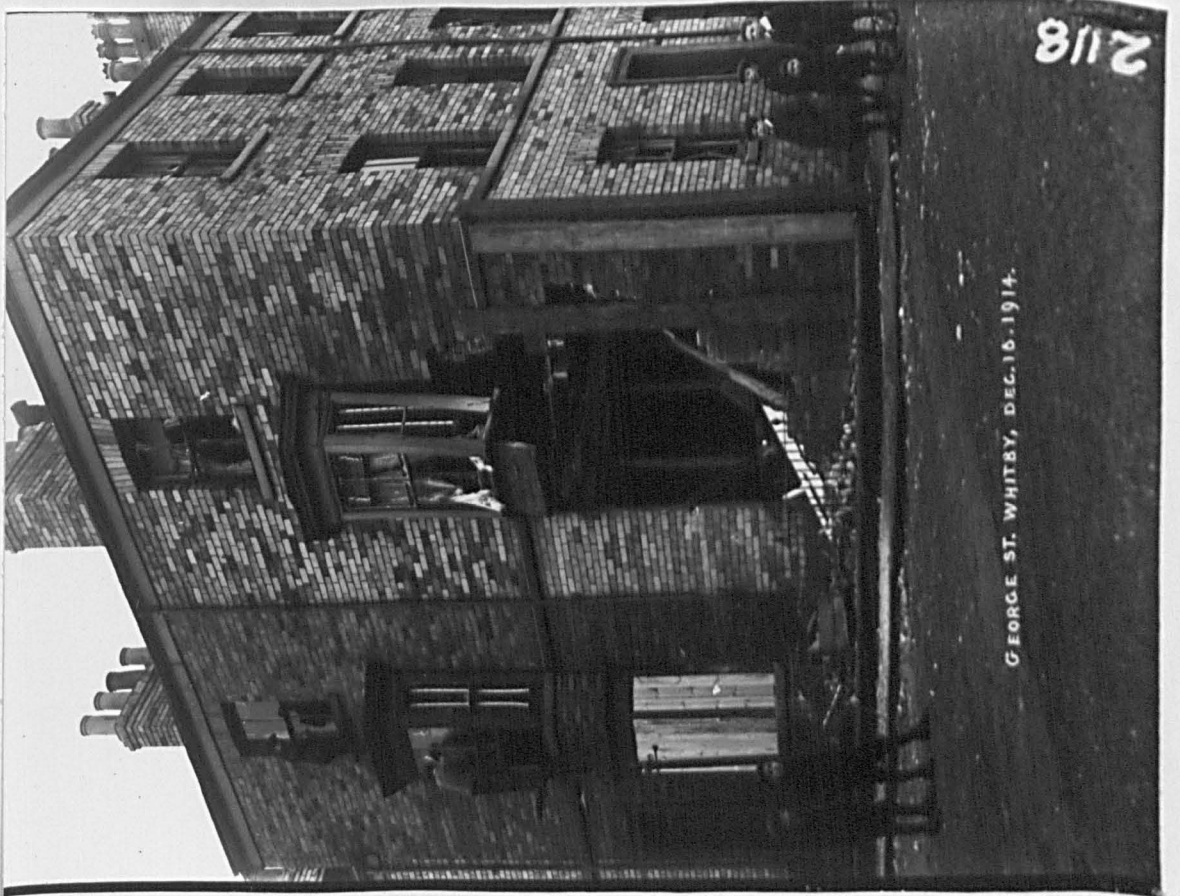


Plate 177



CLEVELAND TERRACE, WHITBY, DEC. 16, 1914.



GEORGE ST. WHITBY, DEC. 16, 1914.



WEST HILL HOUSE, WHITBY, DEC. 6, 1914



Plate 180

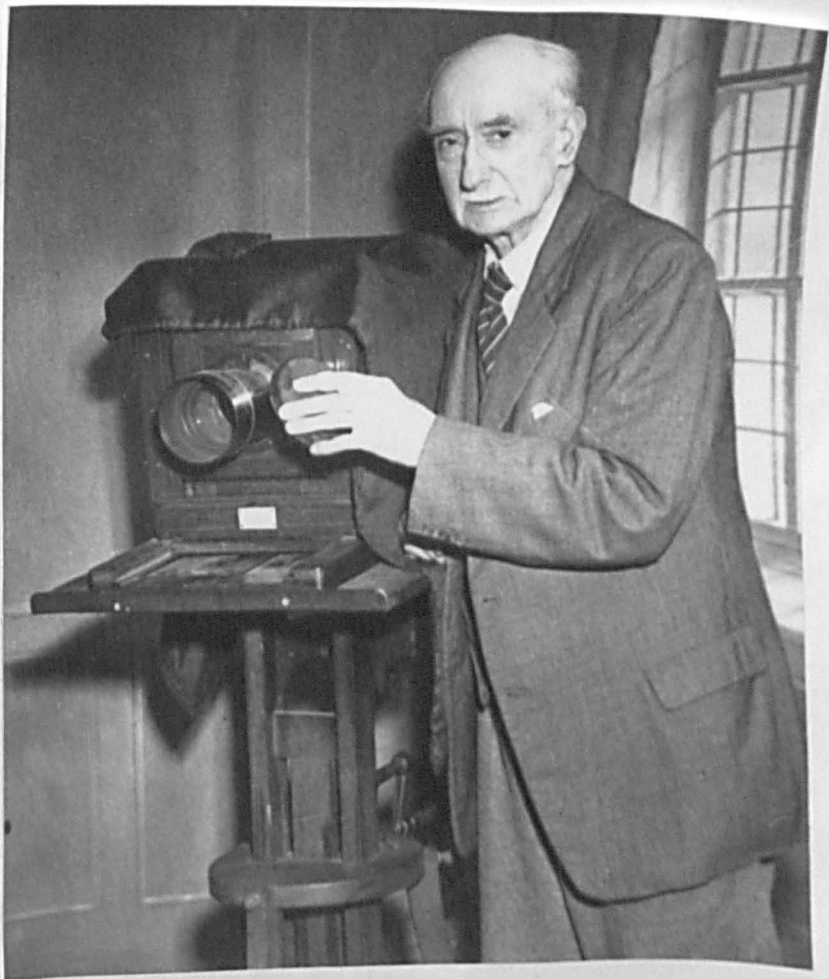


Plate 181



Plate 182



Plate 183



Plate 184

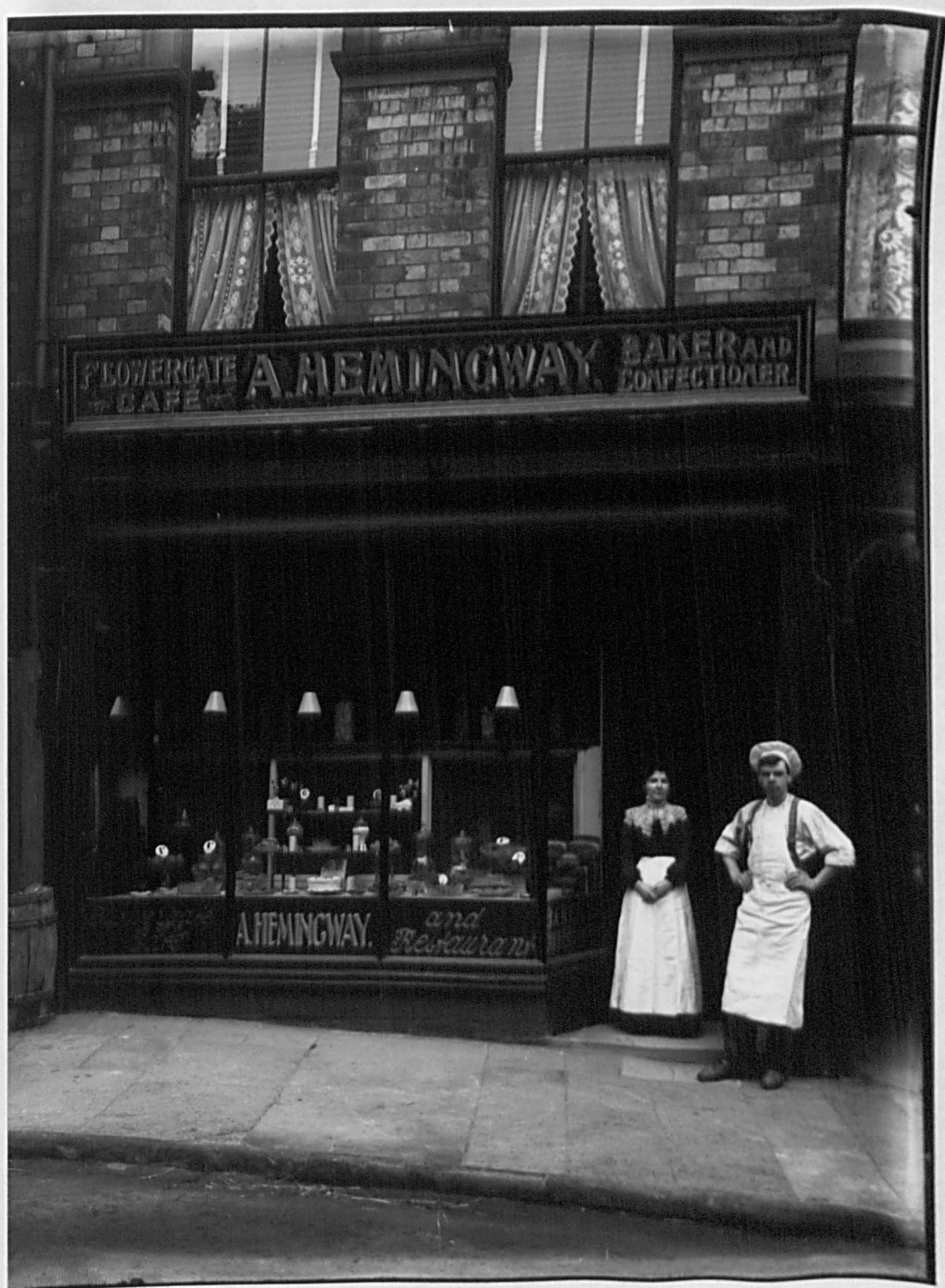


Plate 185



RAMSCALE MILL, FYNDINGDALE S. T. W.

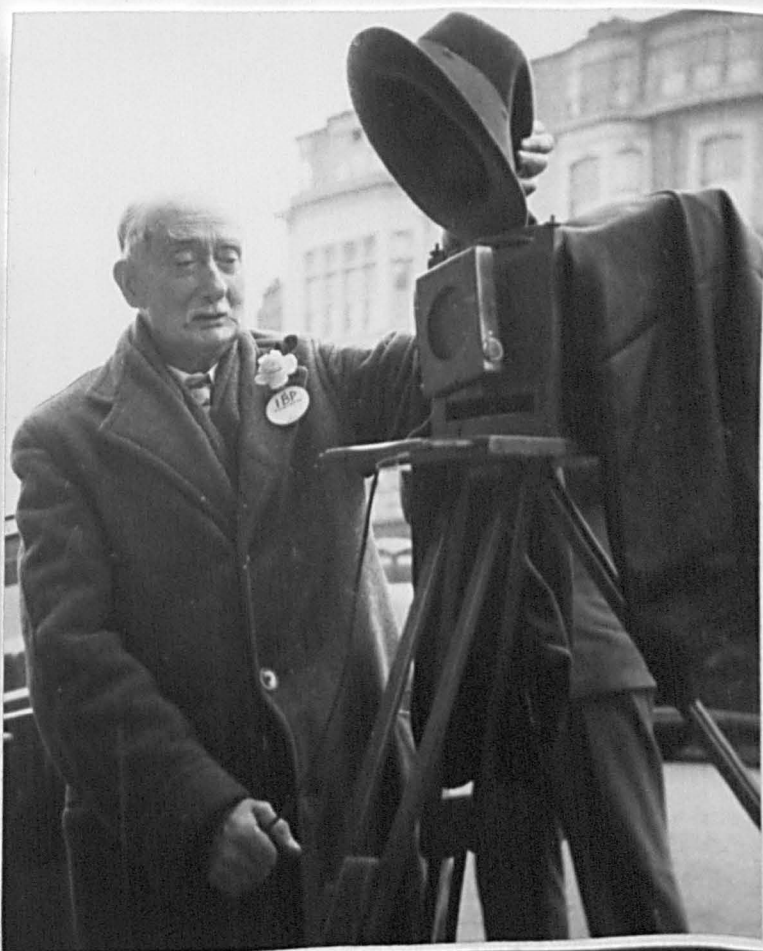


Plate 187

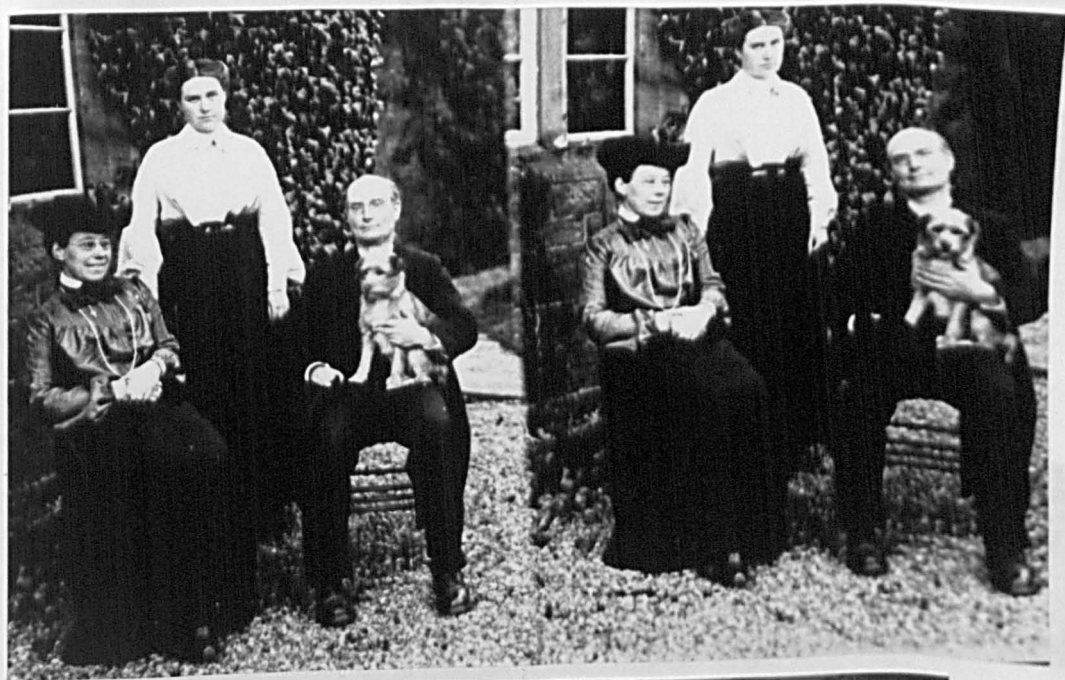


Plate 188

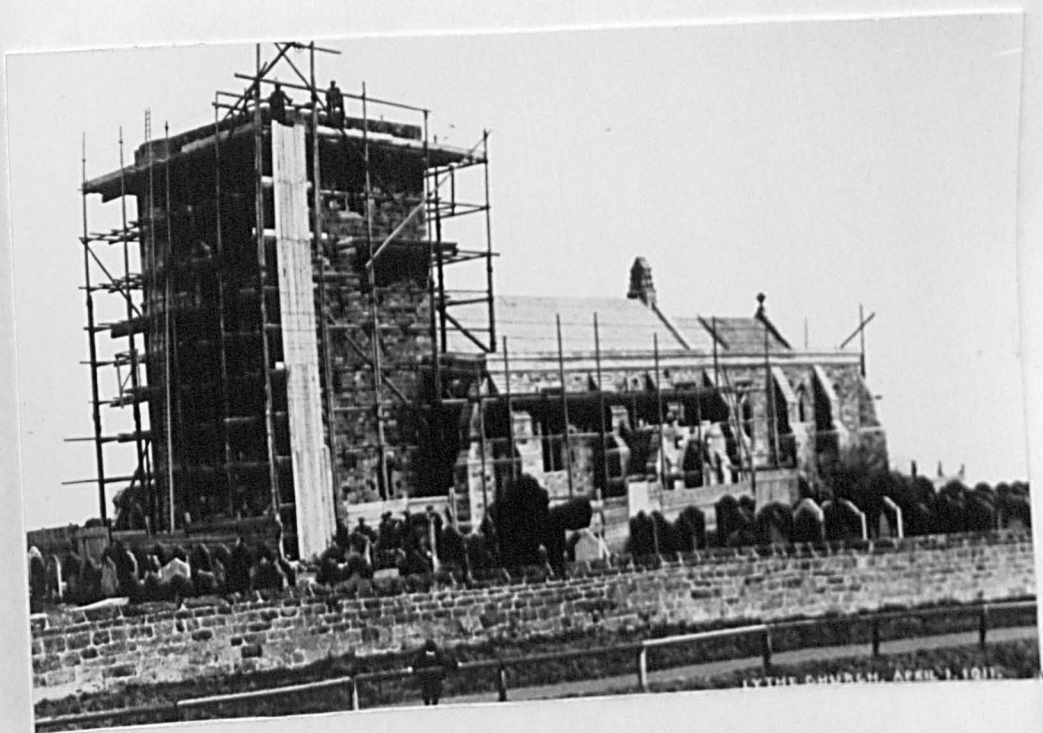


Plate 189



Plate 190



BRICK & PIPE WORKS, COMONDALE, T. N.

Plate 191

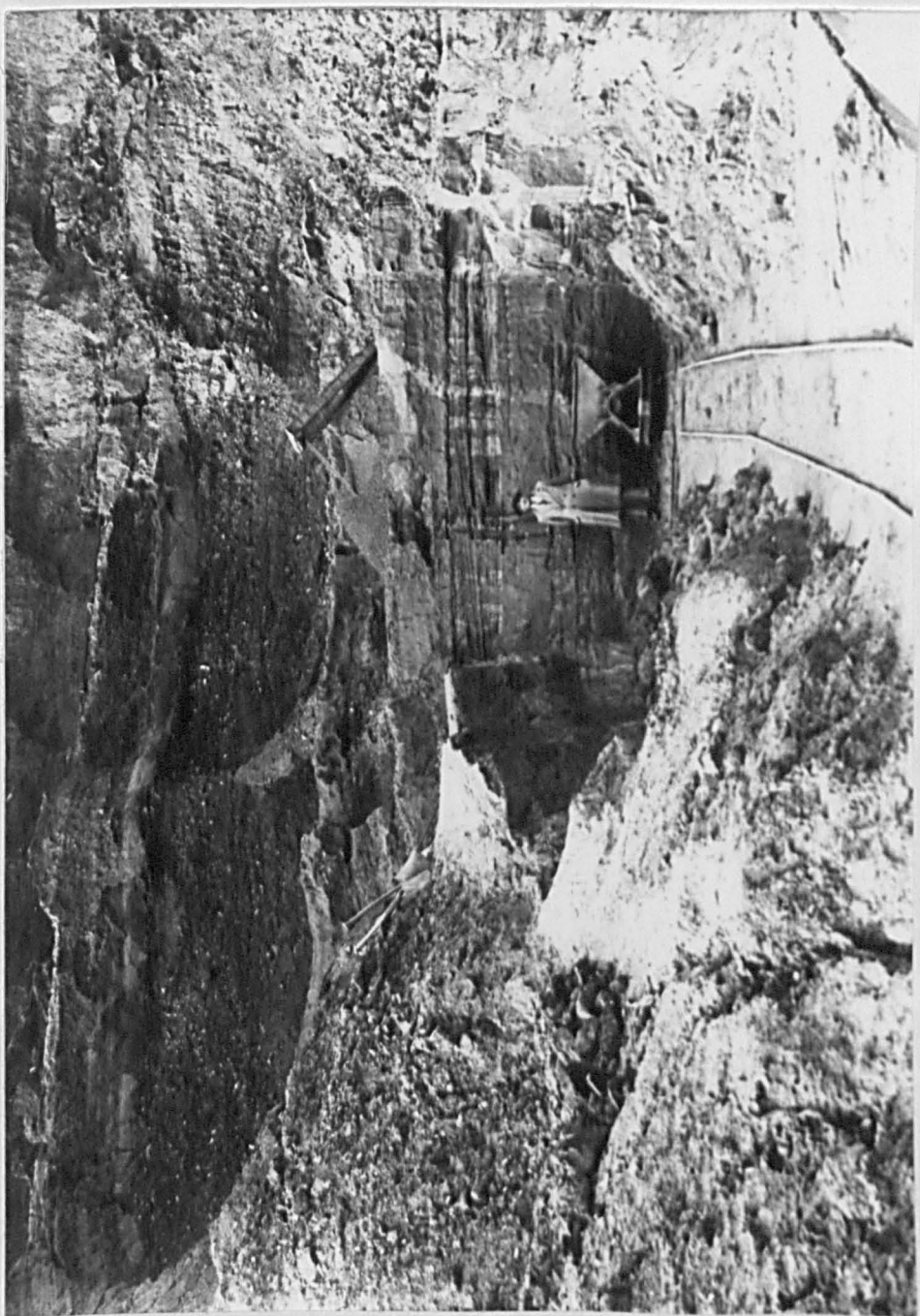


Plate 192



Plate 193



Plate 194



Plate 195

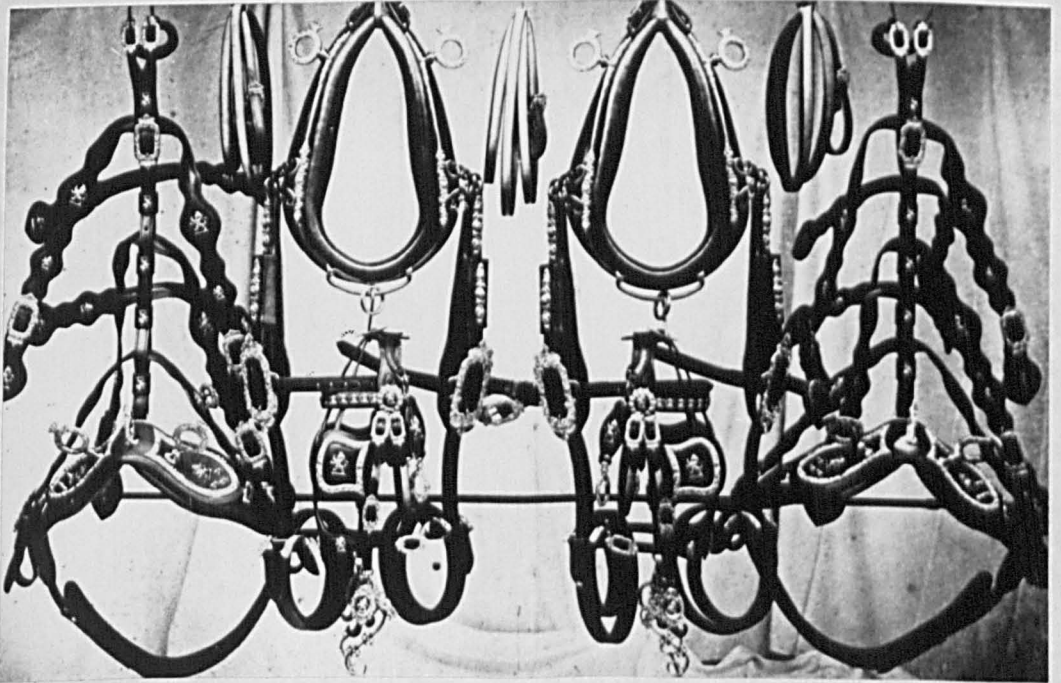


Plate 196



LYTHE CHURCH, 1911.

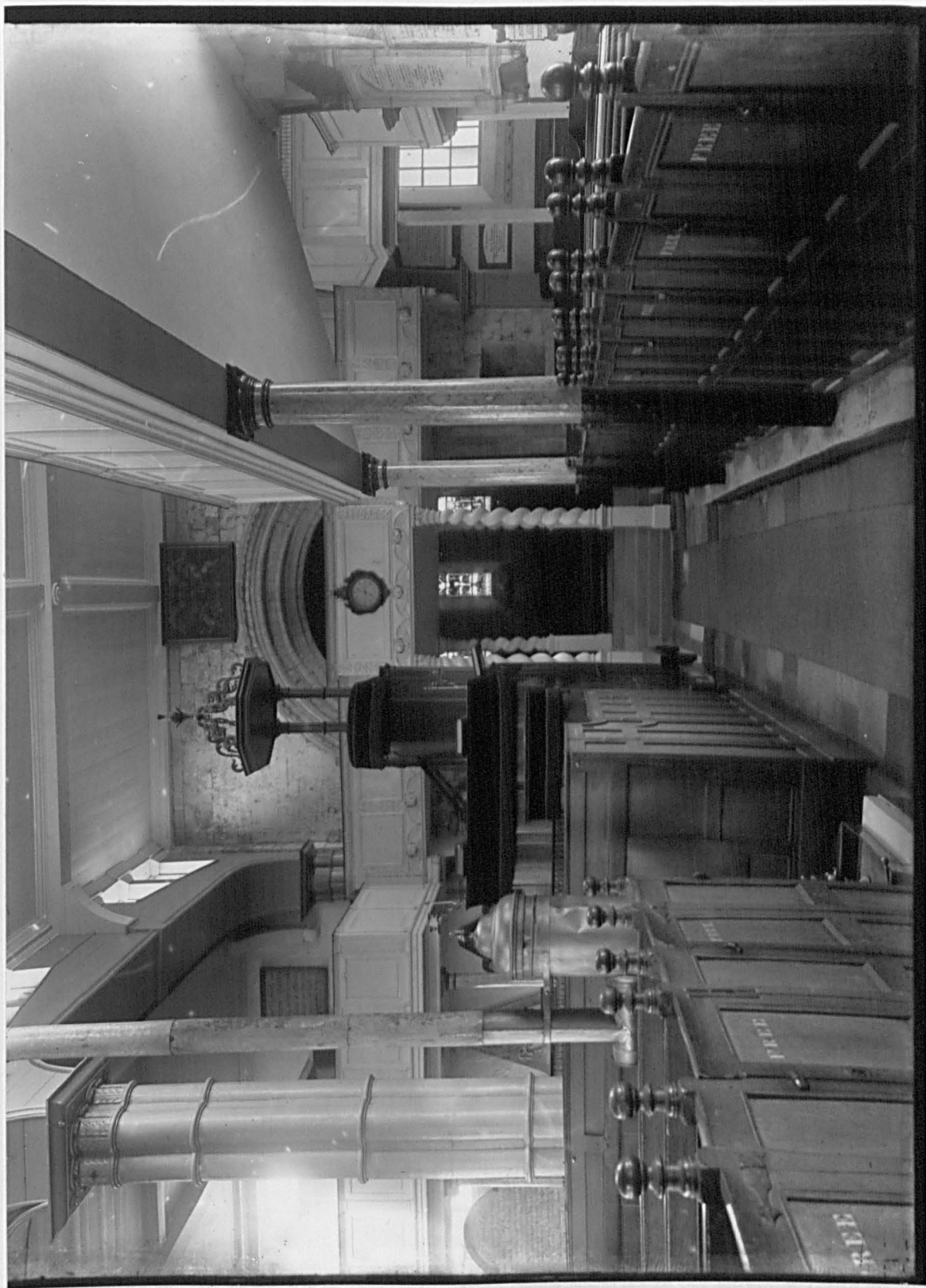


Plate 198



Plate 199



Plate 200



THE LAWN, MULGRAVE, 7. T. W.



Plate 202



Plate 203



Plate 204