

## **The graffiti catalogue**

### **Explanation of content**

This catalogue has been compiled from the photographs of the graffiti taken at the sites studied for this research. This illustrative catalogue forms another original contribution of this thesis to the study of medieval and early modern graffiti. This falls in line with the outputs of other projects such as Champion's Norfolk Medieval Graffiti Survey mentioned in chapters one through six, which provides online photographic evidence of its discoveries for wider use by the public and historical research. This illustrative catalogue supplies a visual understanding of the nature of the practice of inscribing graffiti in the medieval and early modern periods in Beverley Minster and the six parish churches within the Humber region. It demonstrates that the graffiti not only varies in terms of subject matter, but also size and manner of execution. It provides a form of visual evidence to support the descriptions and arguments advanced in chapters three through five. The catalogue is, therefore, a relevant component of this thesis, which future researchers could utilise for their own studies of graffiti as sources for comparison.

In the catalogue the caption beneath each image provides the database ID numbers for the graffiti depicted in the photograph, and further information can be accessed by finding this number in the database. This catalogue does not provide photographs of all 905 examples of graffiti listed in the database, but others can be made available on request. It nevertheless provides a cross section of the different types of the graffiti at each site. For certain images, it has been necessary to superimpose the outline. This has been used for photographs where the graffiti is too lightly-incised to be discerned. Therefore, in some cases, photographs are repeated with one showing an untouched image, and the other depicting the same graffiti with its outline superimposed. This is for viewers to understand how the graffiti appears before interpretation is added when manipulated with a superimposed outline. In other cases the same image is repeated with one showing the graffiti without being highlighted by a torch, and then the following image demonstrates how it appears with a torch cast over it.

The catalogue begins with photographs from the eastern side of the reredos, as the graffiti in this location is the focus of the study. It then features images of the graffiti located in the nave of Beverley Minster, which is followed by images from the parish churches in East Yorkshire and then North Lincolnshire. The images from the five parish churches within East Yorkshire have been arranged in the order of the quantity of graffiti recorded at each site, with Saint Andrew's and Saint Mary's at Paull having the highest total of the parish churches surveyed. The order is as follows:

### *Locations in Beverley Minster*

Eastern reredos.

Nave.

### *Parish churches in East Yorkshire*

Saint Andrew's and Saint Mary's, Paull.

All Saints, Hessle.

Saint Nicholas's, Hornsea.

Saint John of Beverley, Harpham.

Saint Mary's, Welwick.

### *Parish church in North Lincolnshire*

All Saints, Goxhill.

The images of the individual categories of graffiti have been arranged in chronological order, beginning with the medieval types, followed by early modern examples, and finally, the miscellaneous types. The images are also arranged according to their subject type and frequency at each site. For the eastern side of the reredos in Beverley Minster, the order in which the images have been arranged corresponds to that discussed in chapter three.

## **List of entries in the graffiti catalogue**

### **Eastern side of the reredos, Beverley Minster**

- |                    |   |
|--------------------|---|
| Catalogue entry 1: | Overview showing the density of the graffiti on S19                                   |
| Catalogue entry 2: | Overview showing the density of the graffiti on S50                                   |
| Catalogue entry 3: | Graffito of a Latin textual inscription possibly reading 'hec', meaning 'this' on S46 |
| Catalogue entry 4: | Scratched out graffito of a textual inscription on S46                                |
| Catalogue entry 5: | Graffito of a textual inscription on S46  |
| Catalogue entry 6: | Graffito of a textual inscription framed by a box on S51                              |
| Catalogue entry 7: | Graffito of a large textual inscription on S52  |
| Catalogue entry 8: | Graffito of a textual inscription, possibly depicting a forename on S11               |



- Catalogue entry 9: Graffito of a textual inscription on the lines of a stave of musical notation on S15
- Catalogue entry 10: Graffito of a textual inscription on S46
- Catalogue entry 11: Graffito of a Latin cross on S56
- Catalogue entry 12: Graffito of a Fourché cross on S44
- Catalogue entry 13: Graffito of a Fourché cross showing the tips of the arms divided into three on S38
- Catalogue entry 14: Graffito of a Fourché cross distorted by the date 1667 on S15
- Catalogue entry 15: Graffito of a Fourché cross with a long vertical stem located on S01
- Catalogue entry 16: Graffito of a Cross pattée on S59
- Catalogue entry 17: Graffito of a Cross pattée with a long vertical stem located on S31
- Catalogue entry 18: Graffito of a Cross pattée on S56
- Catalogue entry 19: Graffito of a Greek cross on S50
- Catalogue entry 20: Graffiti depicting a Greek cross and part of a letter T on S34
- Catalogue entry 21: Graffiti depicting three similar crosses in the form of a series of dots on S34
- Catalogue entry 22: Graffito of an eight-pointed cross on S09
- Catalogue entry 23: Graffito of a Cross fleury on S59
- Catalogue entry 24: Graffito of a possible Saltire cross on S31
- Catalogue entry 25: Graffito of a possible Consecration cross on S56
- Catalogue entry 26: Graffiti depicting two M letters, overlapping a Fourché cross on S50
- Catalogue entry 27: Graffito of the letter M on S11
- Catalogue entry 28: Graffito of the letter W on S21
- Catalogue entry 29: Graffito of a letter T on S16
- Catalogue entry 30: Graffito of a letter T on S60
- Catalogue entry 31: Graffito of a letter S on S16
- Catalogue entry 32: Graffito of a lower case letter b on S15
- Catalogue entry 33: Graffito of a lower case letter h on S39
- Catalogue entry 34: Graffito of a cross and lozenge on S56
- Catalogue entry 35: Graffito of a cross and lozenge on S18
- Catalogue entry 36: Graffito of a cross and lozenge on S50
- Catalogue entry 37: Graffito of a cross and lozenge on S34
- Catalogue entry 38: Graffito of a large star shape, consisting of various interlinking shapes on S07
- Catalogue entry 39: Graffito of a compass-drawn circle on S53

- Catalogue entry 40: Graffito of a triquetra comprising three compass-drawn circles on S33
- Catalogue entry 41: Graffito of a compass-drawn six-petalled daisywheel on S44
- Catalogue entry 42: Graffiti depicting two large sacred monograms on S49
- Catalogue entry 42a: The superimposed outline of the graffiti depicting two large sacred monograms on S49
- Catalogue entry 43: Graffito of a sacred monogram on S44
- Catalogue entry 43a: The superimposed outline of the graffito of the sacred monogram on S44
- Catalogue entry 44: Graffito of a sacred monogram on S26
- Catalogue entry 44a: The superimposed outline of the graffito of the sacred monogram on S26
- Catalogue entry 45: Graffito of a sacred monogram on S16
- Catalogue entry 45a: The superimposed outline of the graffito of the sacred monogram on S16
- Catalogue entry 46: Graffito of a mitre on S45
- Catalogue entry 47: Graffito of an angel on S02
- Catalogue entry 48: Graffiti depicting two swords or daggers on S55 and S56
- Catalogue entry 49: Graffito of a possible cog type ship on S59
- Catalogue entry 49a: The superimposed outline of the graffito of the ship on S59
- Catalogue entry 50: Graffito of a large possible cog type ship on S12 and S13
- Catalogue entry 50a: The superimposed outline of the graffito of the large possible cog type ship on S12 and S13
- Catalogue entry 51: Graffito of a possible cog type ship on S14 and S15
- Catalogue entry 52: Graffito of a possible cog type ship on S49
- Catalogue entry 53: Overview of a large ship graffito on S38 and S39
- Catalogue entry 53a: The superimposed outline of the graffito of the large ship on S38 and S39
- Catalogue entry 54: Graffito of a possible hulk ship on S18 to S19
- Catalogue entry 54a: The superimposed outline of the graffito of a possible hulk vessel on S18 and S19
- Catalogue entry 54b: The superimposed outline of two overlapping ship graffiti on S18 and S19
- Catalogue entry 55: Graffito depicting a possible barge on S17
- Catalogue entry 55a: The superimposed outline of the graffito depicting a possible barge on S17
- Catalogue entry 56: Graffito of a ship with a crescent-shaped hull on S21
- Catalogue entry 56a: The superimposed outline of the graffito of the ship with a crescent-shaped hull on S21
- Catalogue entry 57: Graffito of a stave of musical notation, comprising part of a polyphonic piece on S02
- Catalogue entry 58: Graffito of a stave of musical notation, comprising part of a polyphonic

- piece on S57
- Catalogue entry 58a: The superimposed outline of the graffito depicting the stave of musical notation on S57
- Catalogue entry 59: Overview of a graffito depicting a large stave of musical notation on S15
- Catalogue entry 59a: The superimposed outline of the graffiti on S15 depicting musical notation, letters and textual inscriptions
- Catalogue entry 60: Graffito possibly depicting a ligature above a stave of musical notation on S57
- Catalogue entry 61: Graffito of a possible four-lined stave of musical notation on S21
- Catalogue entry 62: Graffito of an heraldic device depicting a Fourché cross on S34
- Catalogue entry 63: Graffito of a Fourché cross framed by a faintly-incised shield on S26
- Catalogue entry 63a: The superimposed outline of the faintly-incised shield encompassing a Fourché cross on S26
- Catalogue entry 64: Graffito of a possible pseudo-heraldic shield on S19
- Catalogue entry 64a: The superimposed outline of the possible pseudo-heraldic shield on S19
- Catalogue entry 65: Graffito of a banner on S56
- Catalogue entry 66: Graffito of a ragged staff possibly depicted upside-down on S12
- Catalogue entry 67: Graffito of a ragged staff on S22
- Catalogue entry 67a: The superimposed outline of the graffito of the ragged staff on S22
- Catalogue entry 68: Graffito of a figure depicted in an attitude of prayer on S43
- Catalogue entry 68a: The superimposed outline of the graffito of a figure depicted in an attitude of prayer on S43
- Catalogue entry 69: Graffiti of two full-length figures on S56
- Catalogue entry 69a: The superimposed outline of the two full-length figures and a possible acorn on S56
- Catalogue entry 70: Graffito of a full-length figure depicted in profile on S56
- Catalogue entry 71: Graffito of a figure missing a head on S56
- Catalogue entry 72: Graffito of a portrait showing an arm folded across on S38
- Catalogue entry 73: Graffito of a face depicted in profile, wearing a head-dress on S38
- Catalogue entry 74: Graffiti depicting two possible Agnus Dei motifs on S22
- Catalogue entry 74a: The superimposed outline of the graffiti of the two possible Agnus Dei motifs on S22
- Catalogue entry 75: Graffito of a possible horse beneath the hull of a ship on S38
- Catalogue entry 75a: The superimposed outline of the graffito of the possible horse on S38
- Catalogue entry 76: Graffito of a merchant's mark depicted with a heraldic shield on S53

- Catalogue entry 77: Graffito of a merchant's mark on S45
- Catalogue entry 78: Graffito depicting the name 'John Shorts 1612' framed by an elaborate design on S21
- Catalogue entry 79: Graffito of the name 'Thomas Kirkman 1644' on S55
- Catalogue entry 80: Graffiti depicting the name 'Thomas : Kirkman 1644' and the initial 'ES' on S18
- Catalogue entry 81: Graffito of the name 'C Jordan 1667' on S15
- Catalogue entry 82: Graffito of a possible acorn on S56
- Catalogue entry 83: Graffito of a possible wagon wheel on S34
- Catalogue entry 84: Graffito of a box divided into smaller boxes on S22

### **Nave, Beverley Minster**

- Catalogue entry 85: Graffito of a textual inscription reading 'maburn' on N8
- Catalogue entry 86: Graffito of a foreign textual inscription on N8
- Catalogue entry 87: Graffiti depicting various crosses of a similar style on N5
- Catalogue entry 88: Graffito of a cross on N6
- Catalogue entry 89: Graffito of a pseudo-heraldic device on N8
- Catalogue entry 90: Graffito of an interlaced design located in the west end near the door leading to the north-west tower
- Catalogue entry 91: Graffito of a ragged staff with crosses incised in the centre on S4
- Catalogue entry 92: Graffito of a stave of musical notation with a clef and four notes on N2
- Catalogue entry 93: The notes and clef on the stave of musical notation on N2
- Catalogue entry 94: Graffito of a four-lined stave of musical notation located in the bay between piers N2 and N3
- Catalogue entry 95: Graffito of a large figure on N2
- Catalogue entry 95a: The superimposed outline of the large figure graffito on N2
- Catalogue entry 96: Graffito of a profile of a face on N5
- Catalogue entry 97: Graffiti possibly depicting two interlinked alpha and omega symbols on N6
- Catalogue entry 98: Graffito of the name 'Francis' in abbreviated Latin spelt 'FRACIS' on N3
- Catalogue entry 99: Graffito of the name 'Robert Cvts 1622' on N9, possibly for 'Cutts'
- Catalogue entry 100: Graffito of the name 'Thomas Ashlet 1613' on S8

### **Saint Andrew's and Saint Mary's, Paull**

- Catalogue entry 101: Graffito of a ship located on a pier on the north side of the nave
- Catalogue entry 101a: The superimposed outline of the graffito of a ship on a pier on the north side of the nave

- Catalogue entry 102: Graffito of a small ship located on a pier on the north side of the nave
- Catalogue entry 102a: The superimposed outline of the graffito of the small ship located on a pier on the north side of the nave
- Catalogue entry 103: Graffito of a ship as it appears without using a light source located on a pier on the north side of the nave
- Catalogue entry 103a: Graffito of a ship located on a pier on the north side of the nave, with lighting equipment
- Catalogue entry 104: Graffito of a possible cog type ship located on a pier on the north side of the nave
- Catalogue entry 105: Graffito depicting the hull of a ship without rigging located on a pier on the north side of the nave
- Catalogue entry 106: Graffito of a merchant's mark located on a pier on the north side of the nave
- Catalogue entry 107: Graffito of a small possible Consecration cross located on the south side of the chancel
- Catalogue entry 108: Graffiti depicting a series of concentric compass-drawn circles within circles located on a pier on the north side of the nave

### **All Saints, Hessle**

- Catalogue entry 109: Graffito of a ship located on a pier close to the west end
- Catalogue entry 110: Graffito of a ship showing the detail of the shrouds, yards, crow's nest and planking, situated at a low height on the westernmost pier on the north side of the nave
- Catalogue entry 111: Graffito of a ship showing the detail of its hull and rigging, above the door frame leading to the central power
- Catalogue entry 112: Graffito of a textual inscription located on a pier on the north side of the nave towards the west end
- Catalogue entry 113: Graffito of a stave of musical notation with diamonds and square shapes representing notes, situated above standing eye level near the doorway leading to the central tower
- Catalogue entry 114: Graffito possibly depicting a four-lined stave of musical notation consisting of lines and dots, situated at a low height facing east near the door jamb leading to the central tower
- Catalogue entry 115: Graffito possibly representing a stave of musical notation consisting of lines and dots, located in the west end near the door leading to the tower
- Catalogue entry 116: Graffito of a compass-drawn design of a six-petalled daisywheel, located

above the door frame leading to the central tower

Catalogue entry 117: Graffito of a compass-drawn design consisting of a six-petalled daisywheel, located in the west end near the doorway to the tower

Catalogue entry 118: A faintly-incised graffito of a face located in the west end near the doorway leading to the tower

Catalogue entry 118a: The superimposed outline of the graffito of the face located in the west end near the doorway leading to the tower

Catalogue entry 119: Graffito of a merchant's mark on the westernmost pier on the north side of the nave

Catalogue entry 120: Graffito of a shield located on the westernmost pier near the doorway leading to the tower

Catalogue entry 121: Graffito of a time keeping device located in the west end

### **Saint Nicholas's, Hornsea**

Catalogue entry 122: Graffito of a ragged staff located on the westernmost pier on the south side of the nave

Catalogue entry 123: Graffito depicting a possible angel with compass-drawn circular wings, situated at a low height on a pier on the north side of the nave

Catalogue entry 124: Graffiti of two merchants' marks located on a pier on the south side of the nave

Catalogue entry 125: Graffiti of two W letters consisting of a double V located on a pier on the south side of the nave

Catalogue entry 126: Graffito of a compass-drawn design depicting a faintly-incised daisywheel, located on a pier on the south side of the nave

Catalogue entry 127: Graffito of a face depicted in profile located on a pier on the south side of the nave

Catalogue entry 128: Graffito of a possible bird located on the westernmost pier on the south side of the nave

### **Saint John of Beverley, Harpham**

Catalogue entry 129: Graffiti of two sacred monograms located on the east side of the west arch

Catalogue entry 130: Graffito of a textual inscription located on the west side of the chancel arch

Catalogue entry 131: Graffito of a textual inscription located on the west side of the chancel arch

Catalogue entry 132: Graffito possibly depicting a hulk type ship located on the north side of the west tower arch facing towards the nave

Catalogue entry 133: Graffito of a portrait, possibly a caricature wearing an elaborately decorated hat located on the east side of the west arch

Catalogue entry 134: Graffiti depicting two birds located on the west arch of the tower

### **Saint Mary's, Welwick**

Catalogue entry 135: Graffito of a mitred head located on a pier on the north side of the nave

Catalogue entry 136: Graffito of a shield located on a pier on the south side of the nave

Catalogue entry 137: Graffito of a textual inscription located on the door jamb on south-west entrance

Catalogue entry 138: Graffito of a possible hulk type ship located on a pier on the north side of the nave

### **All Saints, Goxhill**

Catalogue entry 139: Graffito of a face wearing a hat located on a pier on the north side of the nave

Catalogue entry 140: Graffiti of two faces depicted wearing hats located on a pier on the north side of the nave

Catalogue entry 141: Graffito of a face depicted wearing a hat located on a pier on the north side of the nave

Catalogue entry 142: Graffito of a portrait of a woman wearing a hat located on a pier on the north side of the nave

Catalogue entry 143: Graffito of a portrait of a woman wearing a hat located on a pier on the north side of the nave

Catalogue entry 144: Graffito of a figure in armour wielding a sword located on the westernmost pier on the south side of the nave

Catalogue entry 145: Graffito of a full-length figure located on a pier on the south side of the nave

Catalogue entry 145a: The superimposed outline of the graffito of the full-length figure on a pier on the south side of the nave

Catalogue entry 146: Graffiti of two figures situated at a low height on the east side of the chancel arch

Catalogue entry 147: Graffito depicting a horse being ridden by a figure located on the easternmost pier on the north side of the nave

Catalogue entry 148: Graffito of a faintly-incised ship located on a pier on the north side of the nave

Catalogue entry 148a: The superimposed outline of the graffito of the faintly-incised ship, located on a pier on the north side of the nave

Catalogue entry 149: Graffito of a compass-drawn design located on a pier on the north side of

the nave

Catalogue entry 150: Graffito of a possible Consecration cross located on a pier on the north side of the nave

Catalogue entry 151: An early modern graffito depicting the name 'George Roberts' located in the west end



**Eastern side of the reredos, Beverley Minster**



Catalogue entry 1: Overview showing the density of the graffiti on S19

Database ID nos: 0159, 0160, 0377, 0380, 381, 0382, 0383, 0384, 0385,  
0386, 0387, 0388



Catalogue entry 2: Overview showing the density of the graffiti on S50

Database ID nos: 0315, 0316, 0317, 0318, 0319, 0320, 0321, 0322, 0323,  
0495, 0496, 0497





Catalogue entry 3: Graffito of a Latin textual inscription possibly reading 'hec', meaning 'this' on S46

Database ID no: 0287



Catalogue entry 4: Scratched out graffito of a textual inscription on S46

Database ID no: 0290





Catalogue entry 5: Graffito of a textual inscription on S46

Database ID no: 0289



Catalogue entry 6: Graffito of a textual inscription framed by a box on S51

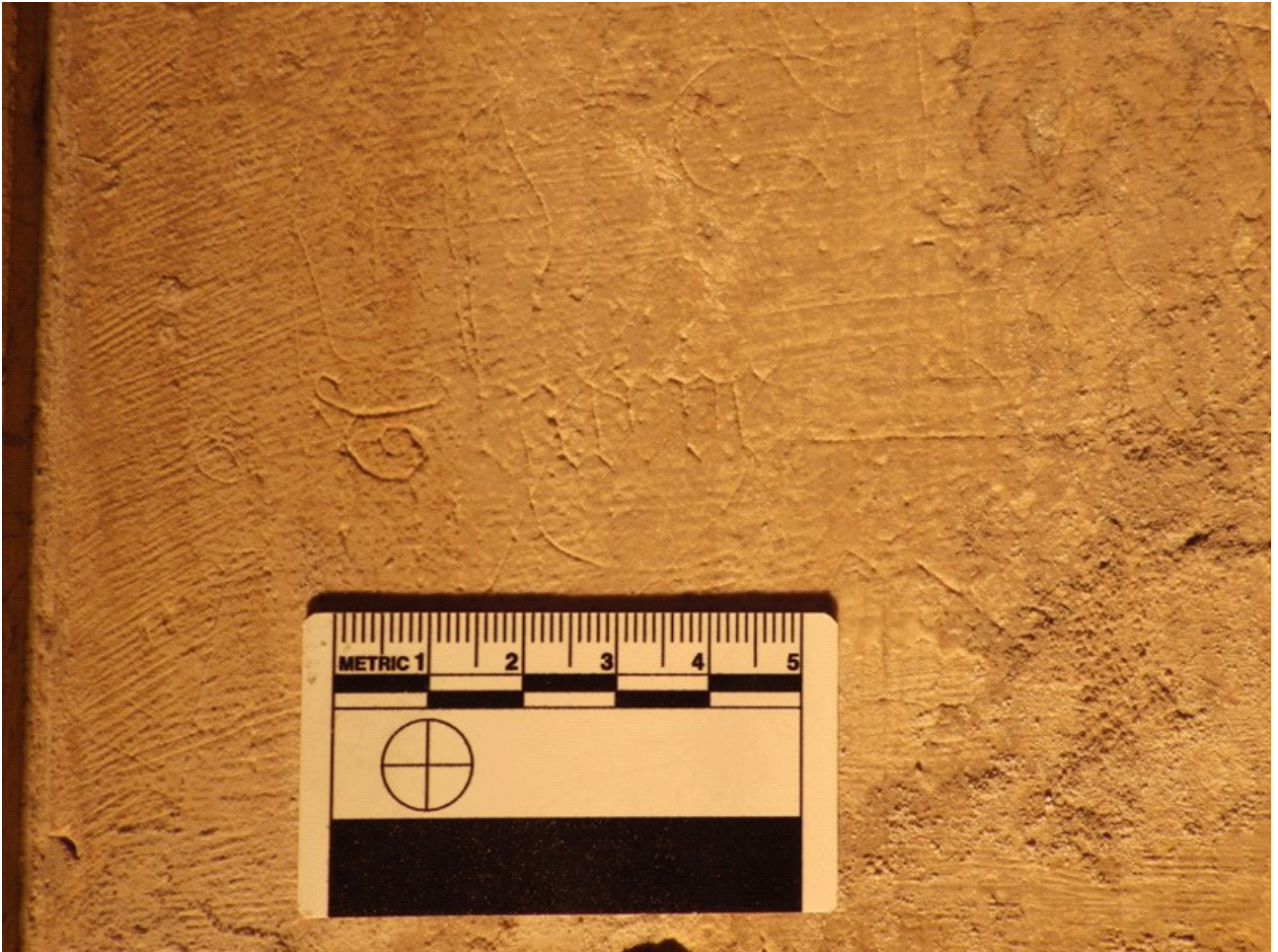
Database ID no: 0313





Catalogue entry 7: Graffito of a large textual inscription on S52

Database ID no: 0312



Catalogue entry 8: Graffito of a textual inscription, possibly depicting a forename on S11

Database ID no: 0182

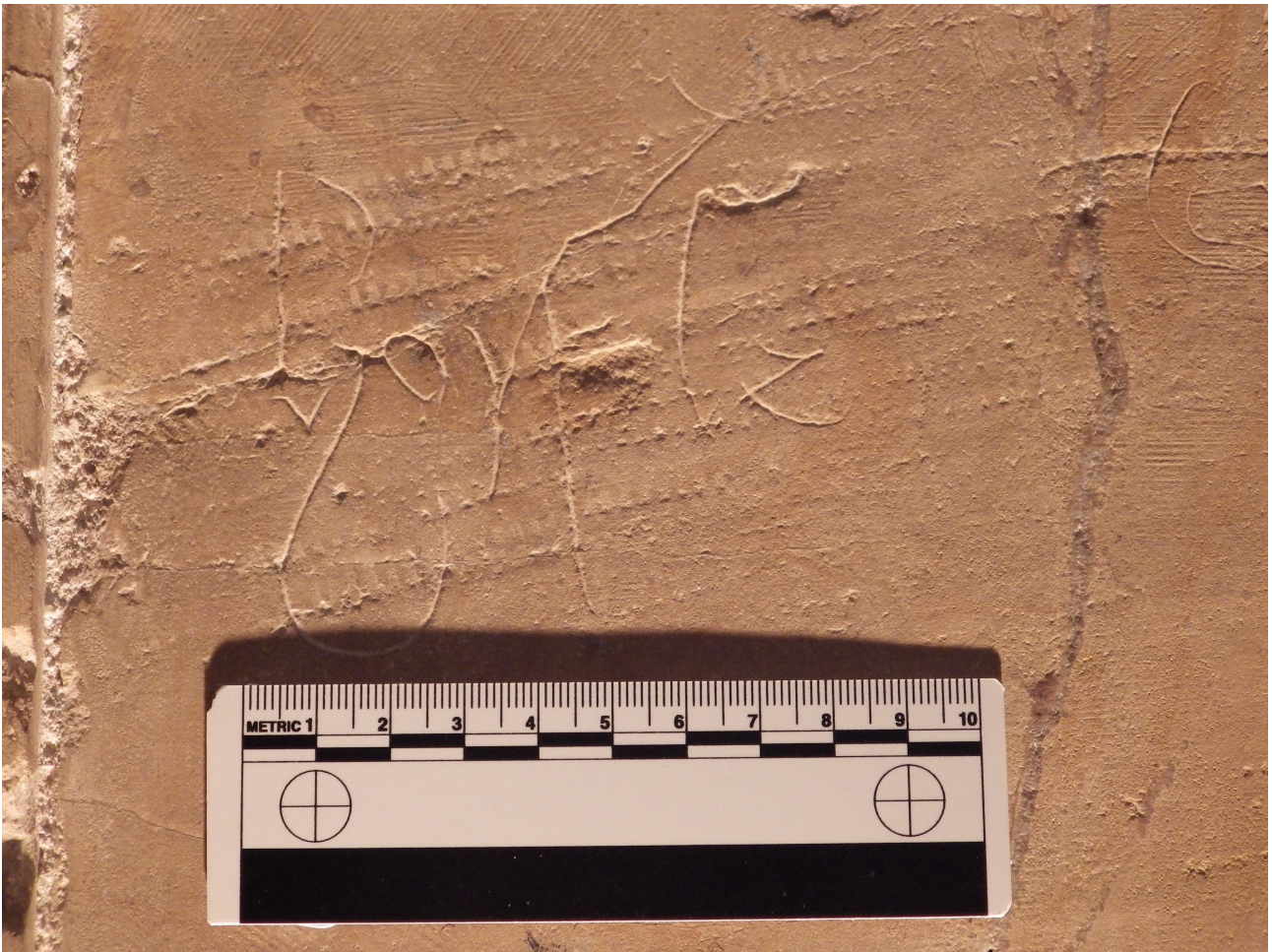




Catalogue entry 9: Graffito of a textual inscription on the lines of a stave of musical notation on S15

Database ID no: 0405





Catalogue entry 10: Graffito of a textual inscription on S46

Database ID no: 0286



Catalogue entry 11: Graffito of a Latin cross on S56

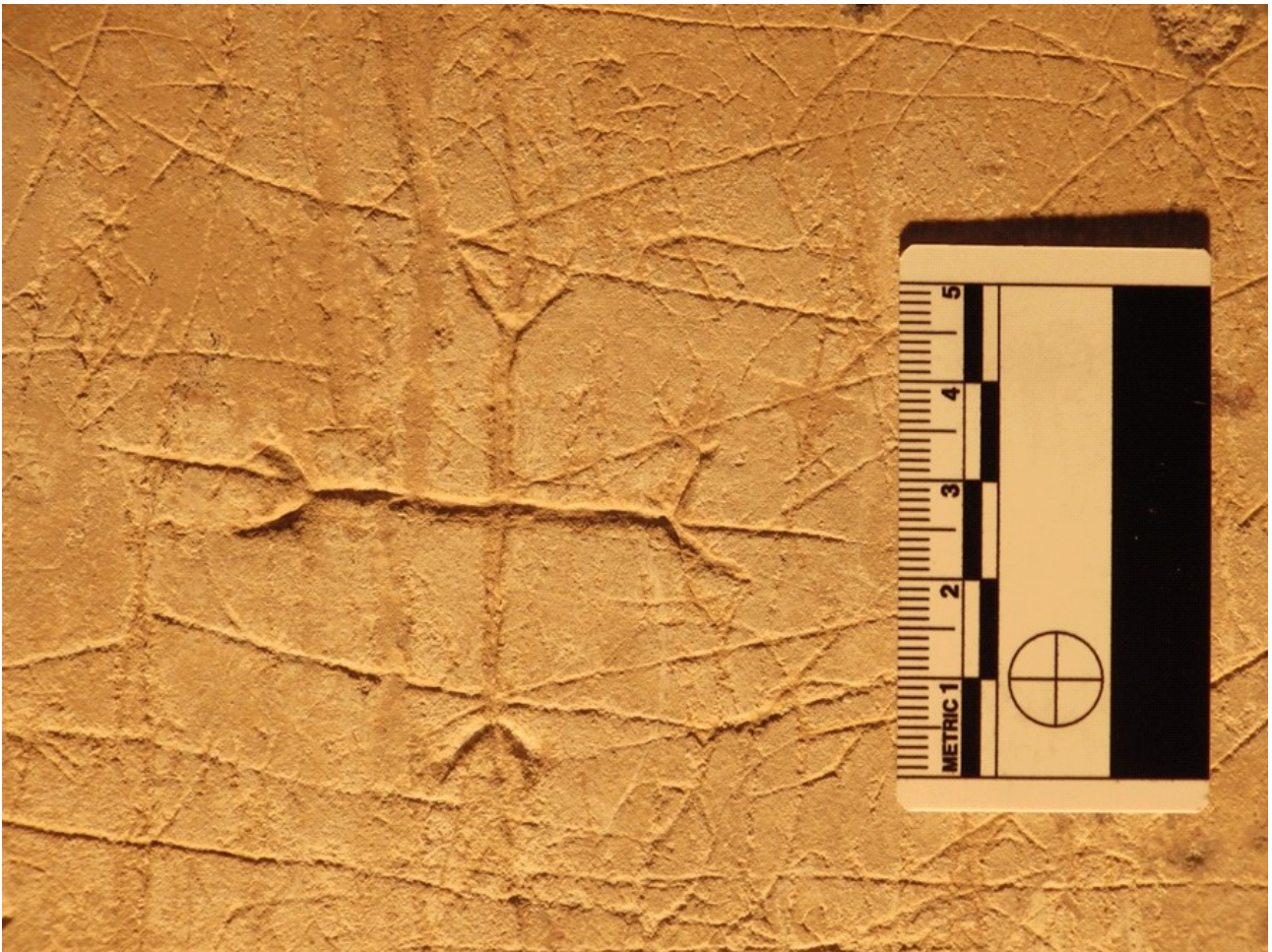
Database ID no. 0335





Catalogue entry 12: Graffito of a Fourché cross on S44

Database ID no: 0300



Catalogue entry 13: Graffito of a Fourché cross showing the tips of the arms divided into three on S38

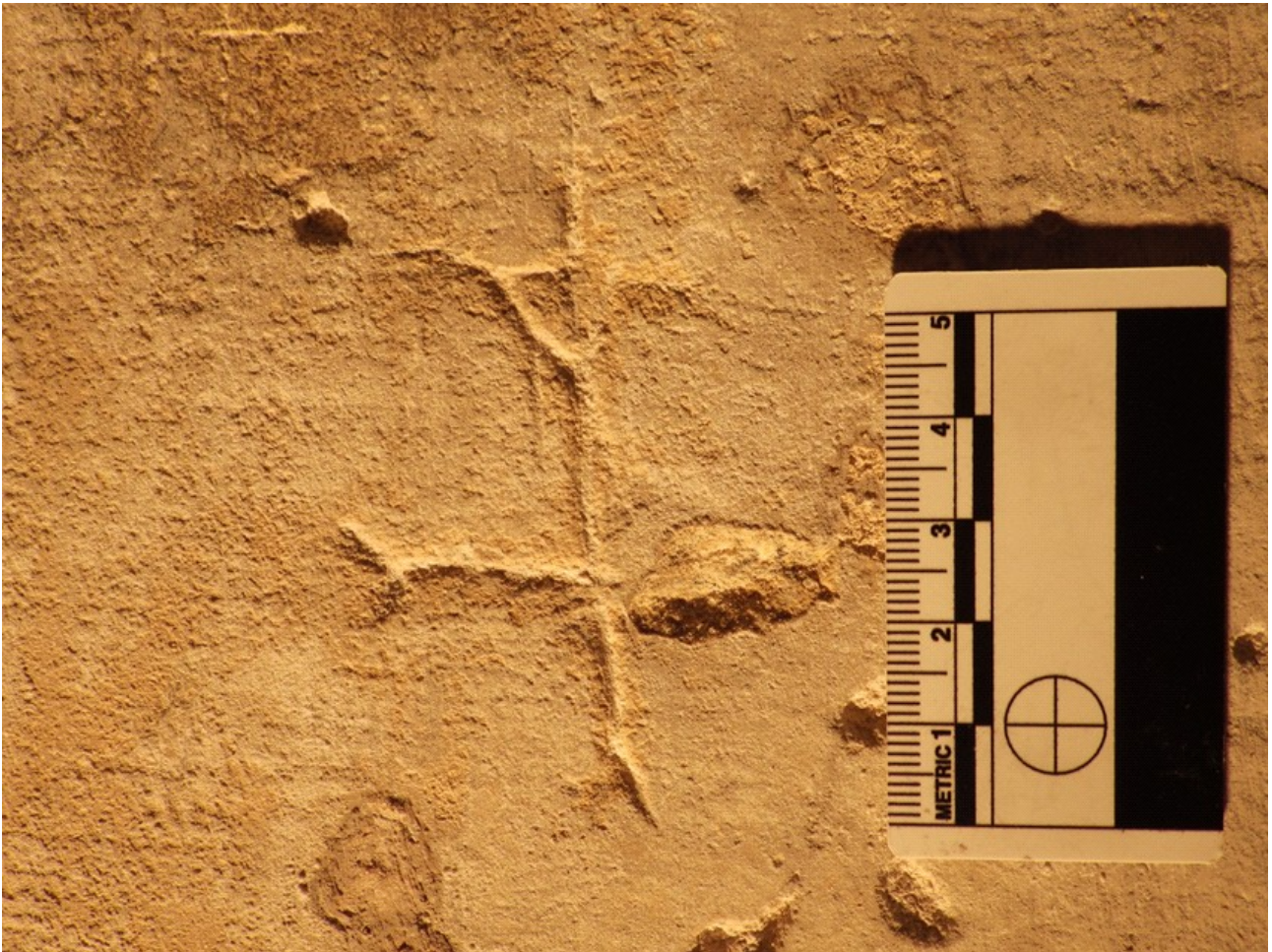
Database ID no: 0271





Catalogue entry 14: Graffito of a Fourché cross distorted by the date 1667 on S15

Database ID no: 0173



Catalogue entry 15: Graffito of a Fourché cross with a long vertical stem located on S01

Database ID no: 0116

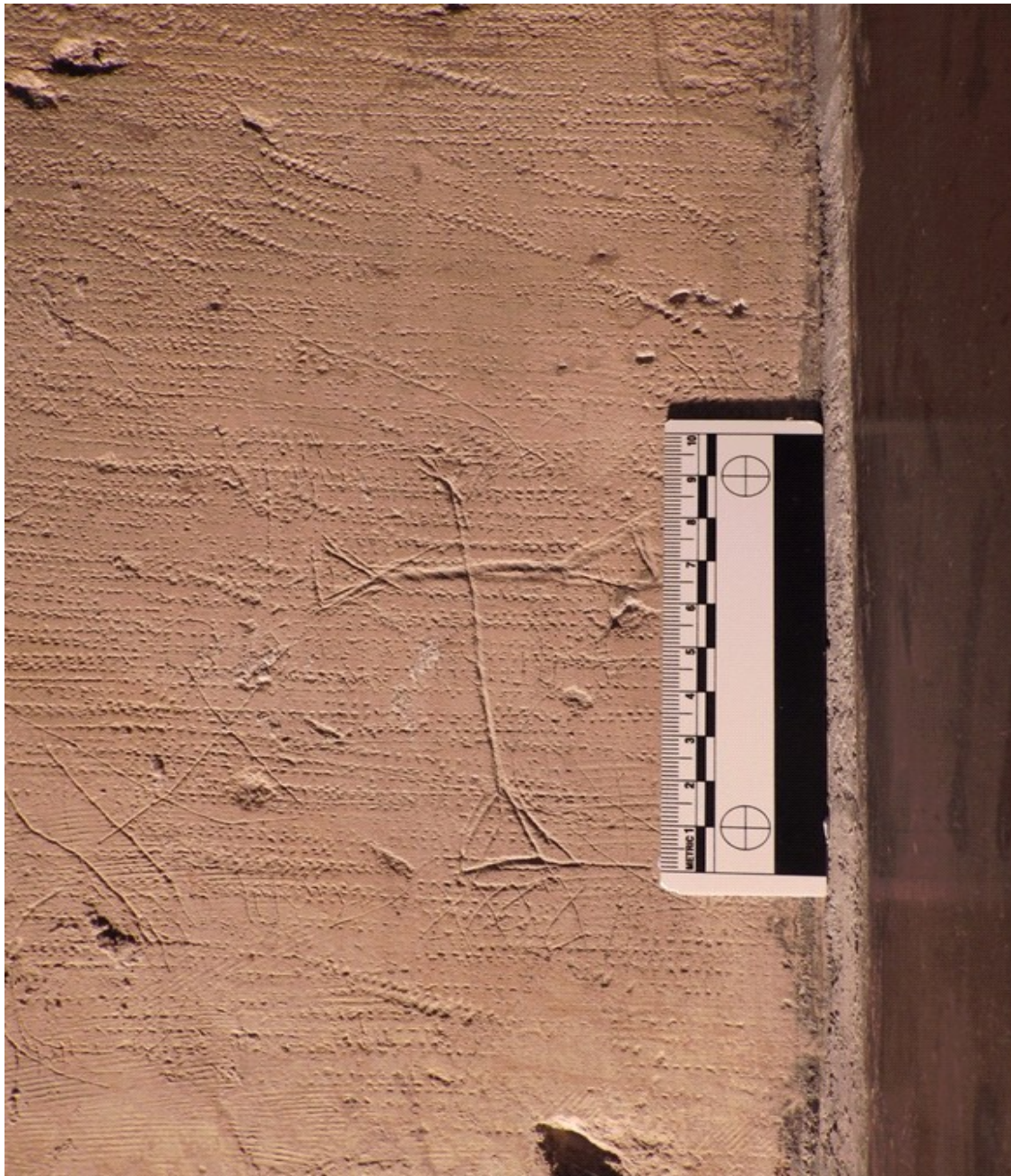




Catalogue entry 16: Graffito of a Cross pattée on S59

Database ID no: 0132





Catalogue entry 17: Graffito of a Cross pattée with a long vertical stem located on S31

Database ID no. 0220





Catalogue entry 18: Graffito of a Cross pattée on S56

Database ID no: 0129



Catalogue entry 19: Graffito of a Greek cross on S50

Database ID no: 0317





Catalogue entry 20: Graffiti depicting a Greek cross and part of a letter T on S34

Database ID no: 0242





Catalogue entry 21: Graffiti depicting three similar crosses in the form of a series of dots on S34

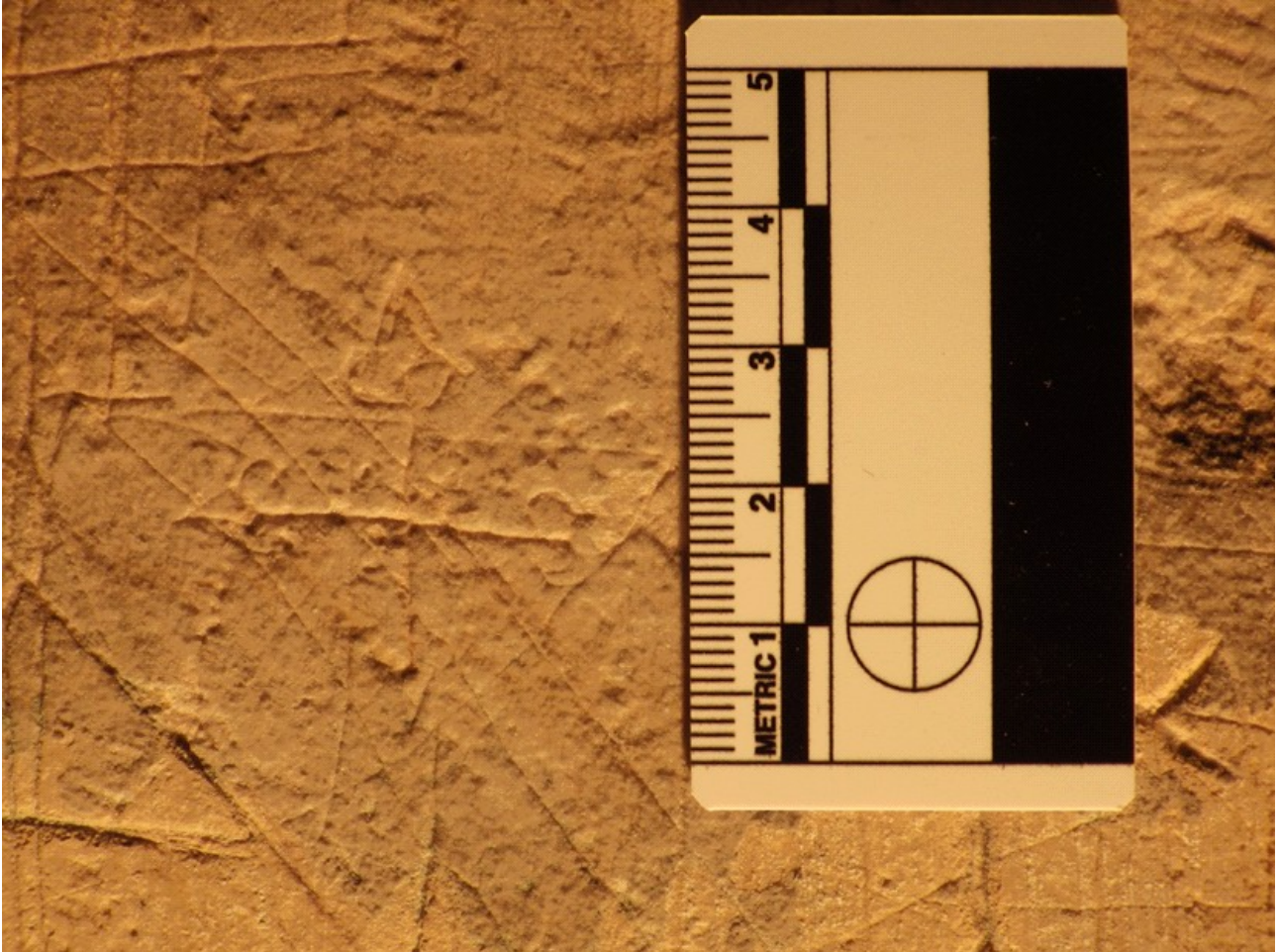
Database ID nos: 0236, 0237, 0238



Catalogue entry 22: Graffito of an eight-pointed cross on S09

Database ID no: 0111





Catalogue entry 23: Graffito of a Cross fleury on S59

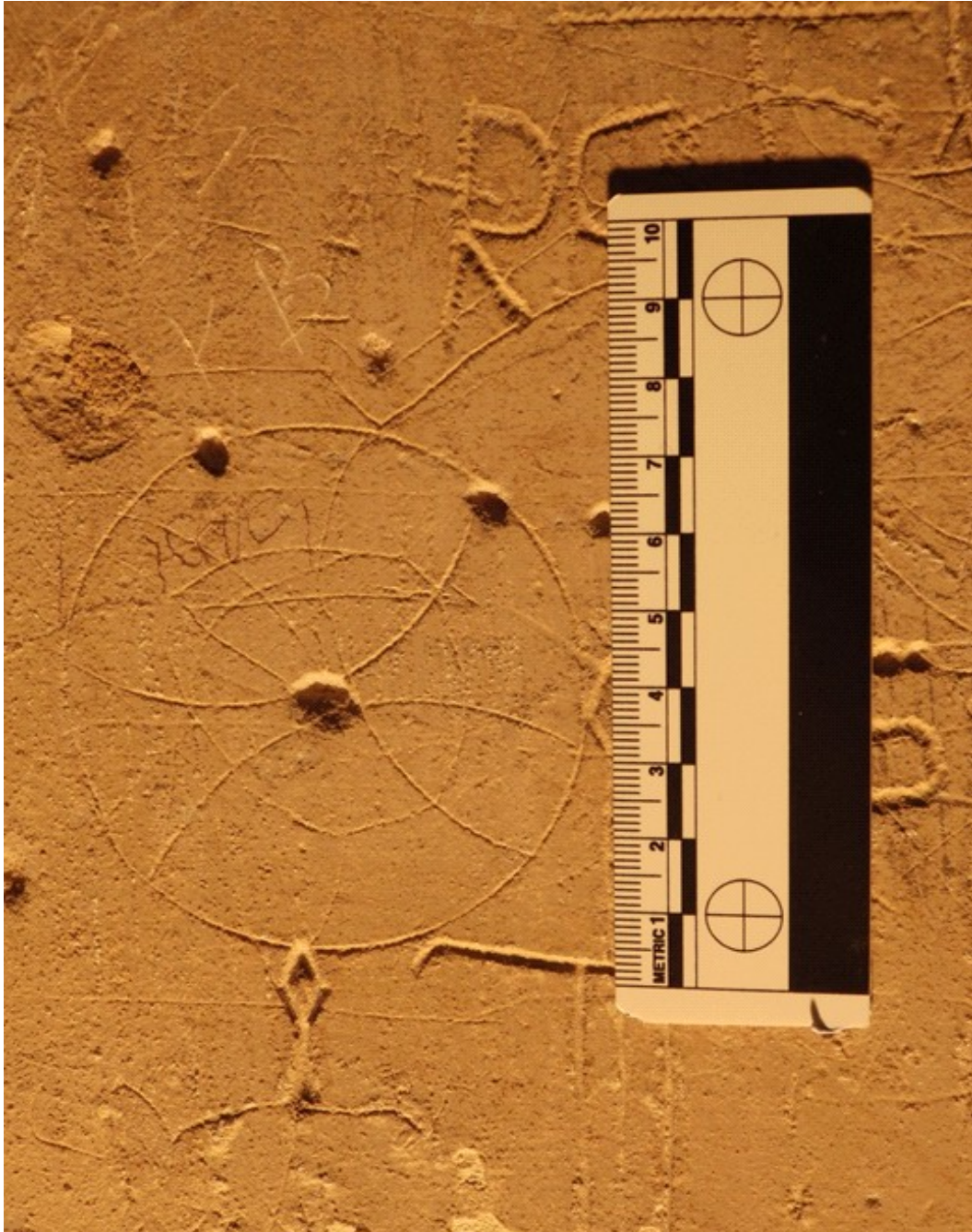
Database ID no: 0133



Catalogue entry 24: Graffito of a possible Saltire cross on S31

Database ID no: 0221





Catalogue entry 25: Graffito of a possible Consecration cross on S56

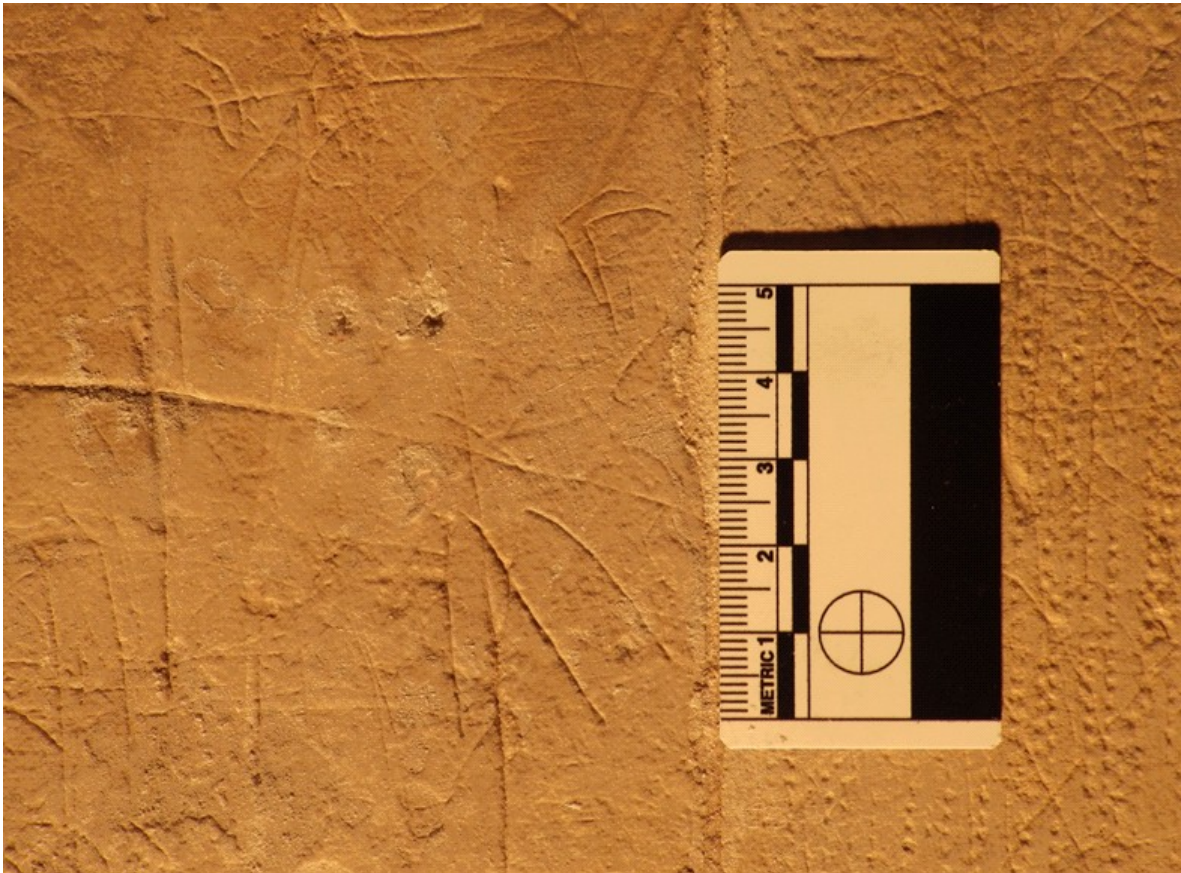
Database ID no: 0124



Catalogue entry 26: Graffiti depicting two M letters, overlapping a Fourché cross on S50

Database ID nos: 0139, 0320. (M letters)





Catalogue entry 27: Graffito of the letter M on S11

Database ID no: 0204



Catalogue entry 28: Graffito of the letter W on S21

Database ID no: 0135





Catalogue entry 29: Graffito of a letter T on S16

Database ID no: 0395



Catalogue entry 30: Graffito of a letter T on S60

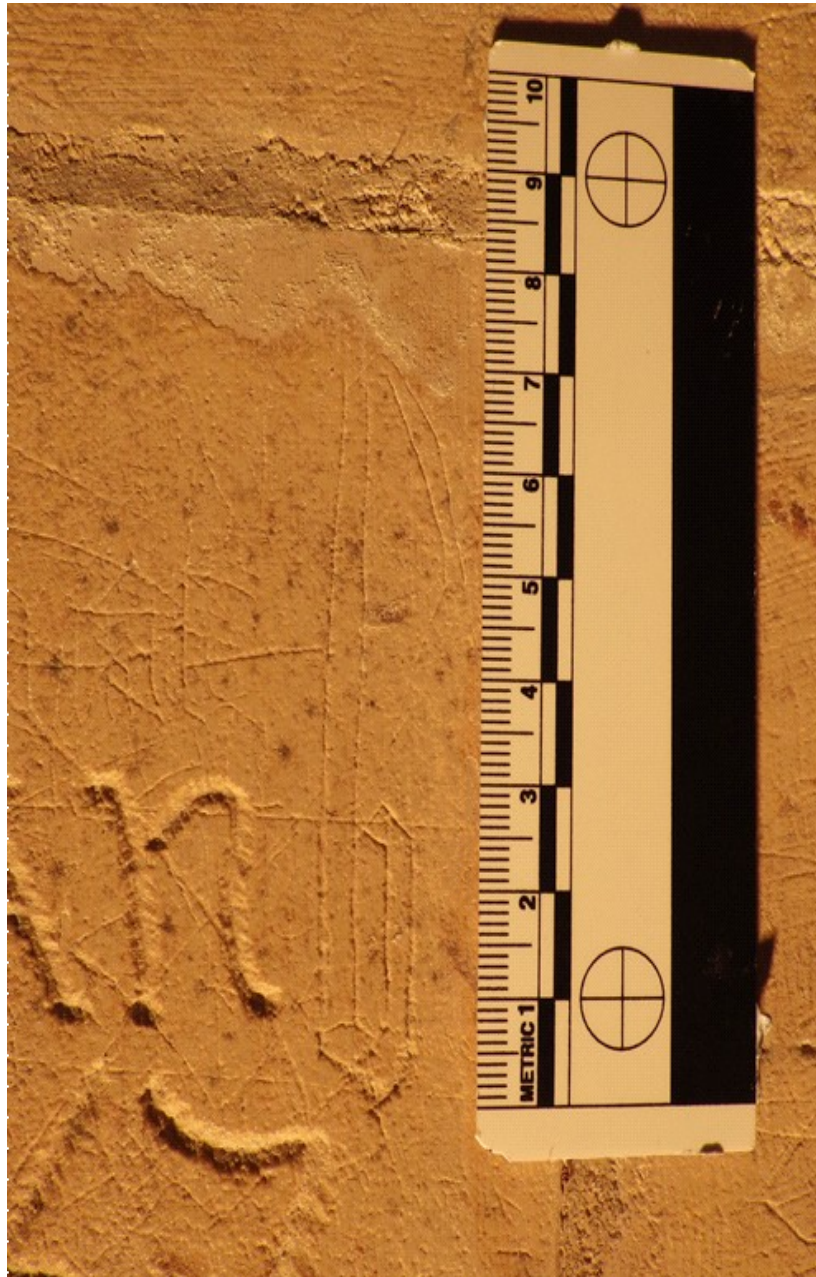
Database ID no: 0130





Catalogue entry 31: Graffito of a letter S on S16

Database ID no: 0401



Catalogue entry 32: Graffito of a lower case letter b on S15

Database ID no: 0408





Catalogue entry 33: Graffito of a lower case letter h on S39

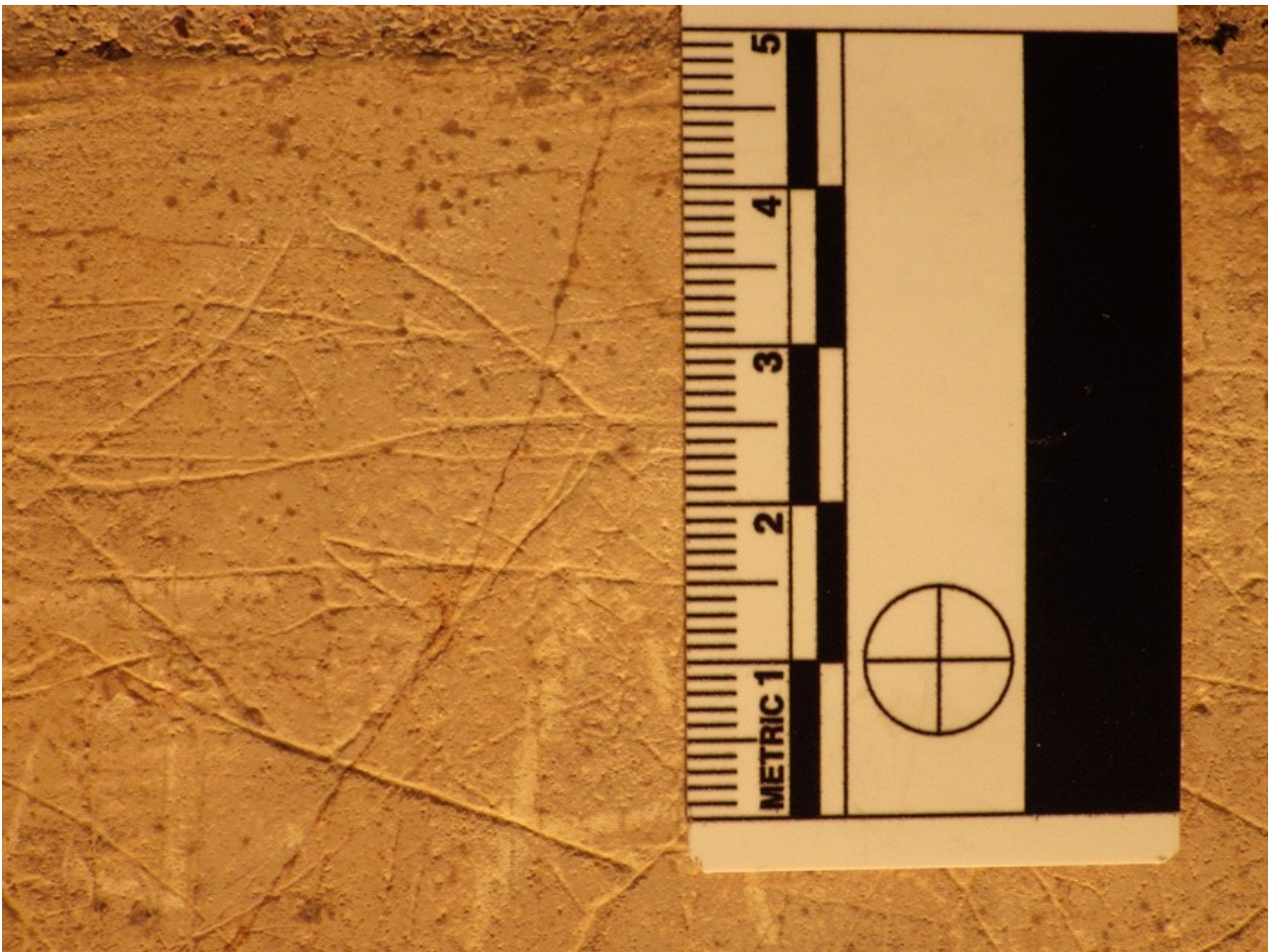
Database ID no: 0463



Catalogue entry 34: Graffito of a cross and lozenge on S56

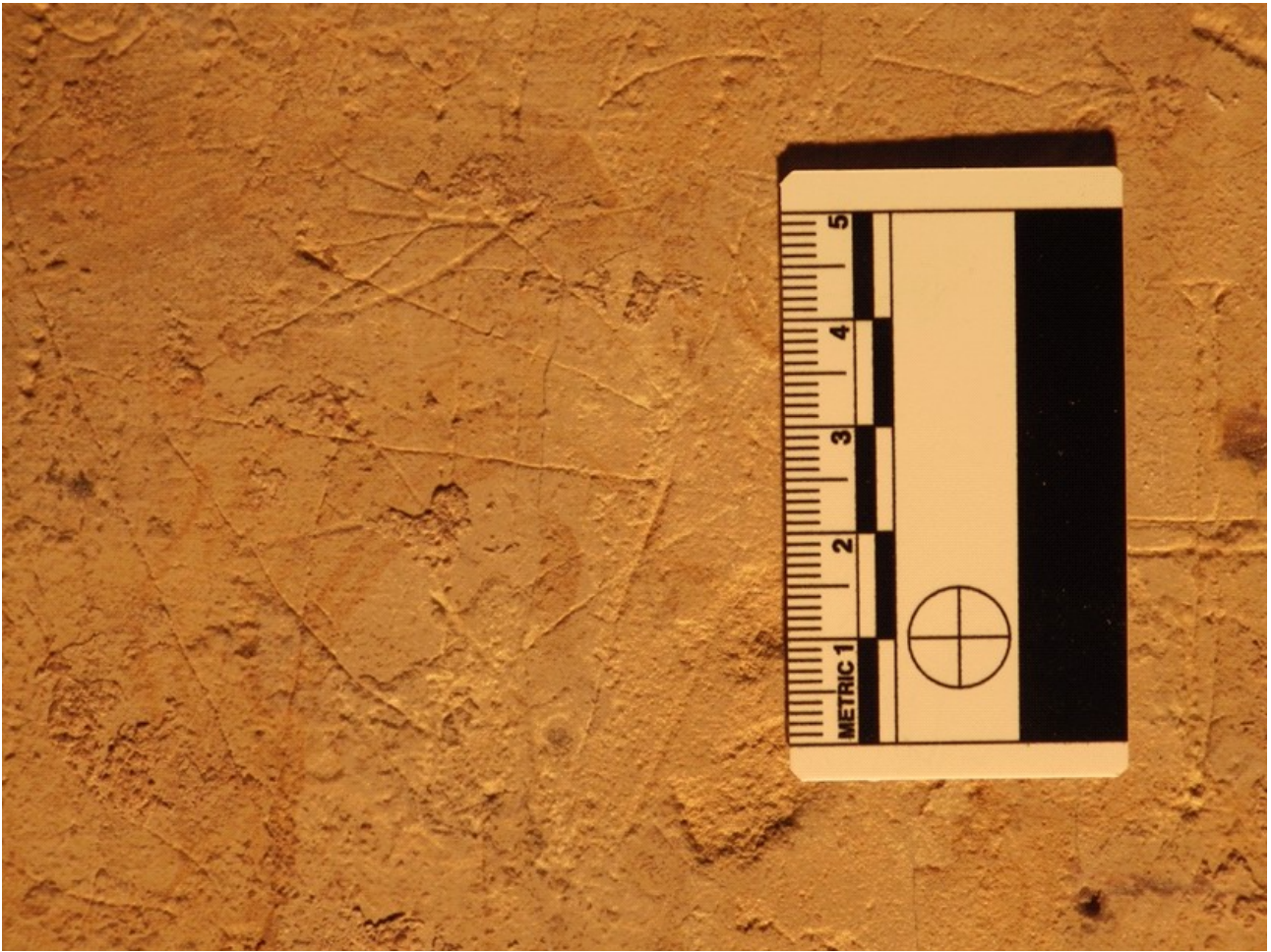
Database ID no: 0341





Catalogue entry 35: Graffito of a cross and lozenge on S18

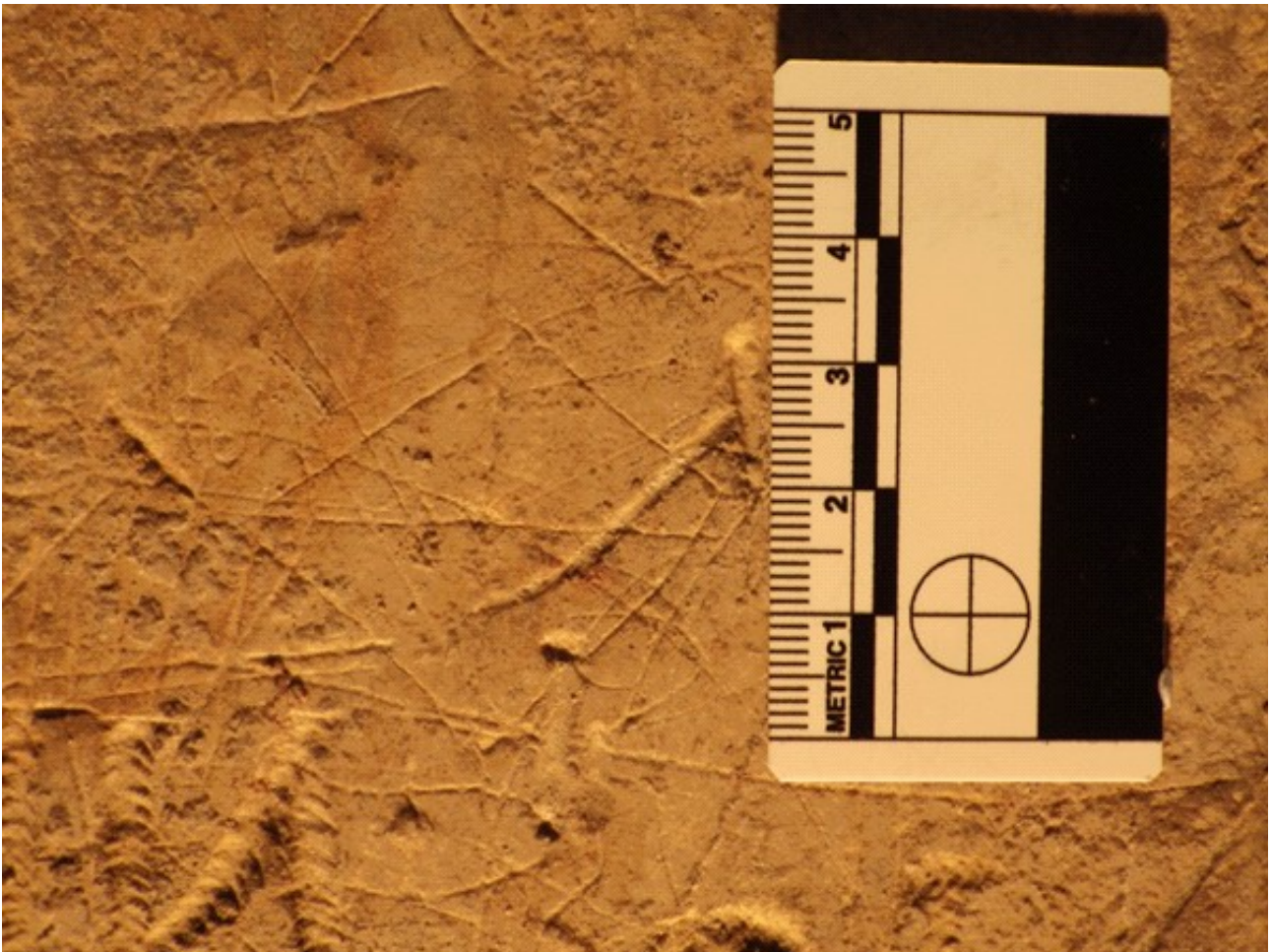
Database ID no: 0389



Catalogue entry 36: Graffito of a cross and lozenge on S50

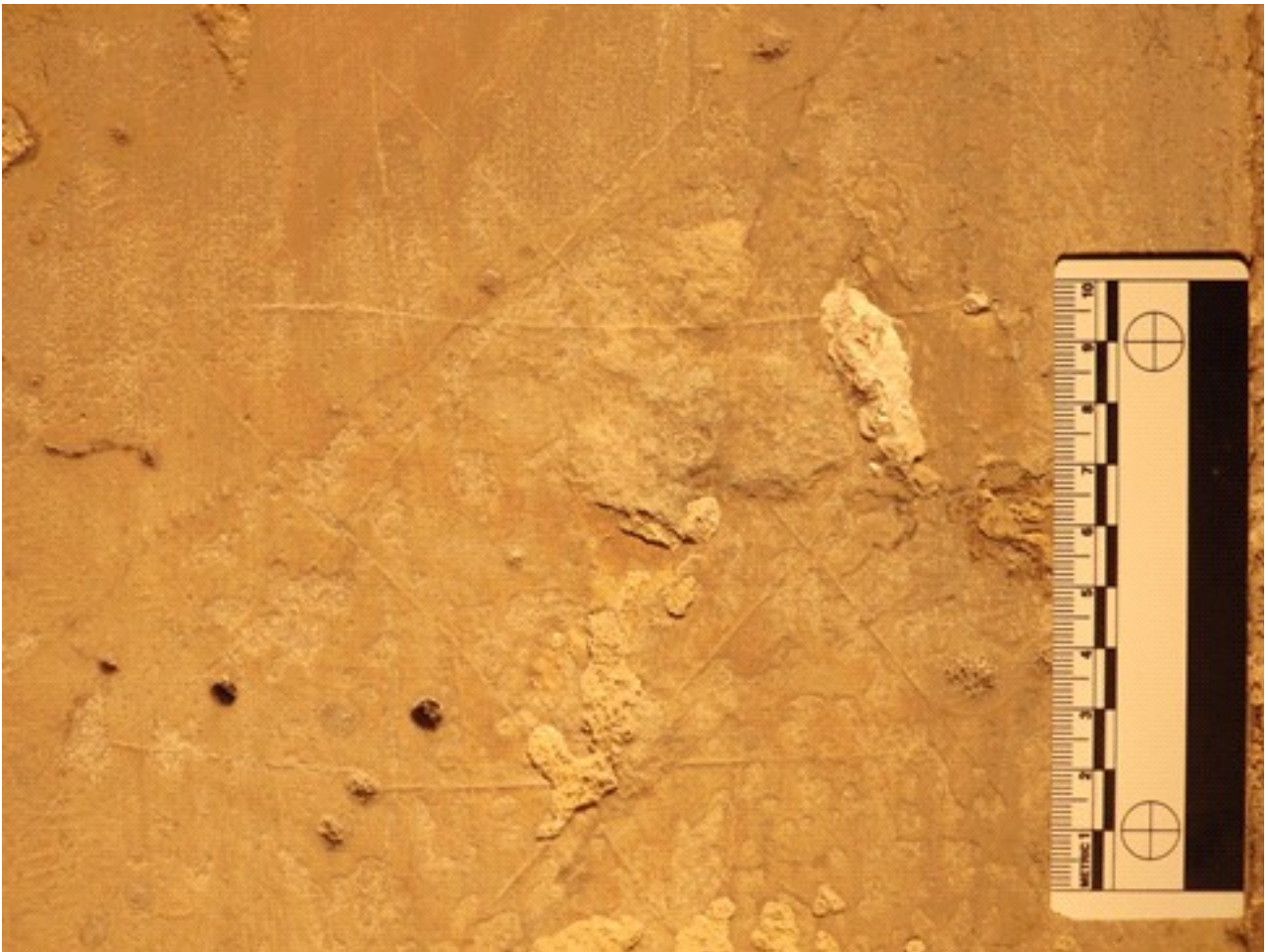
Database ID no: 0321





Catalogue entry 37: Graffito of a cross and lozenge on S34

Database ID no: 0234



Catalogue entry 38: Graffito of a large star shape, consisting of various interlinking shapes on S07

Database ID no: 0118





Catalogue entry 39: Graffito of a compass-drawn circle on S53

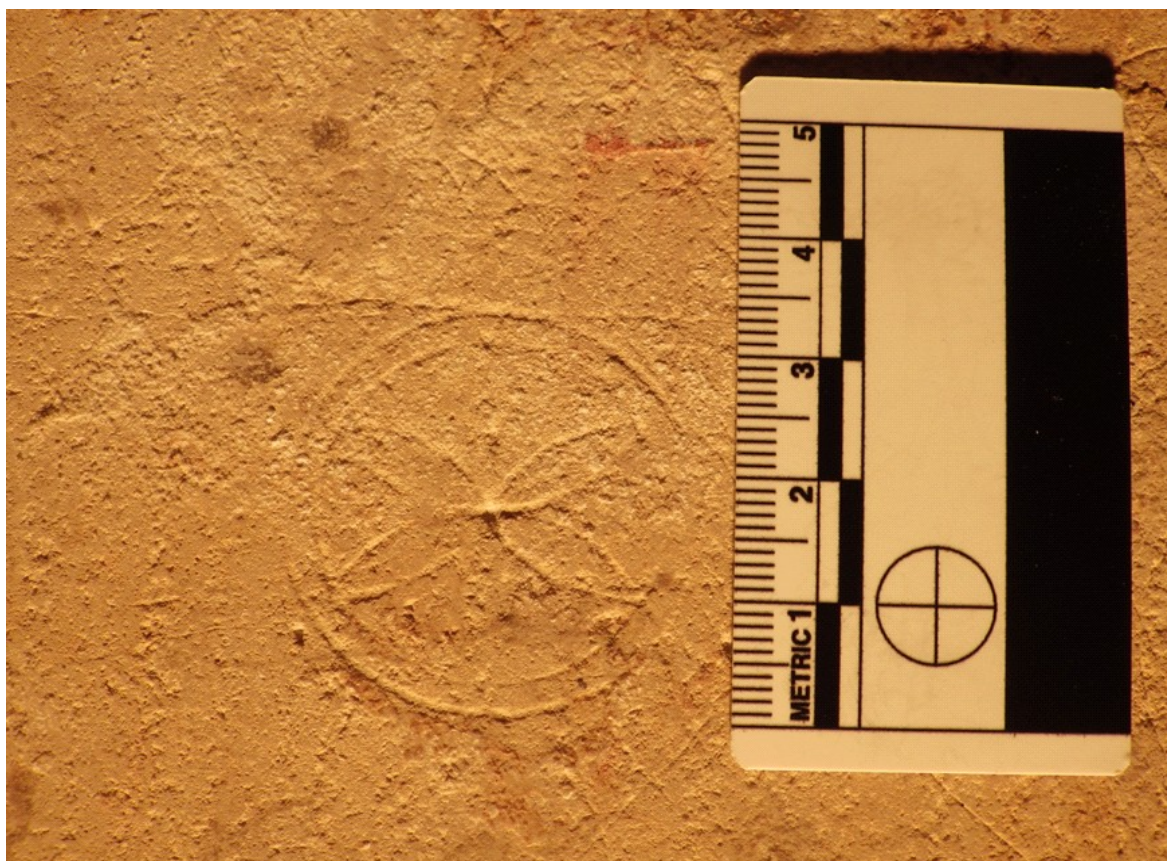
Database ID no: 0358



Catalogue entry 40: Graffito of a triquetra comprising three compass-drawn circles on S33

Database ID no: 0245





Catalogue entry 41: Graffito of a compass-drawn six-petalled daisywheel on S44

Database ID no: 0302



Catalogue entry 42: Graffiti depicting two large sacred monograms on S49

Database ID no: 0326, 0560





Catalogue entry 42a: The superimposed outline of the graffiti depicting two large sacred monograms on S49

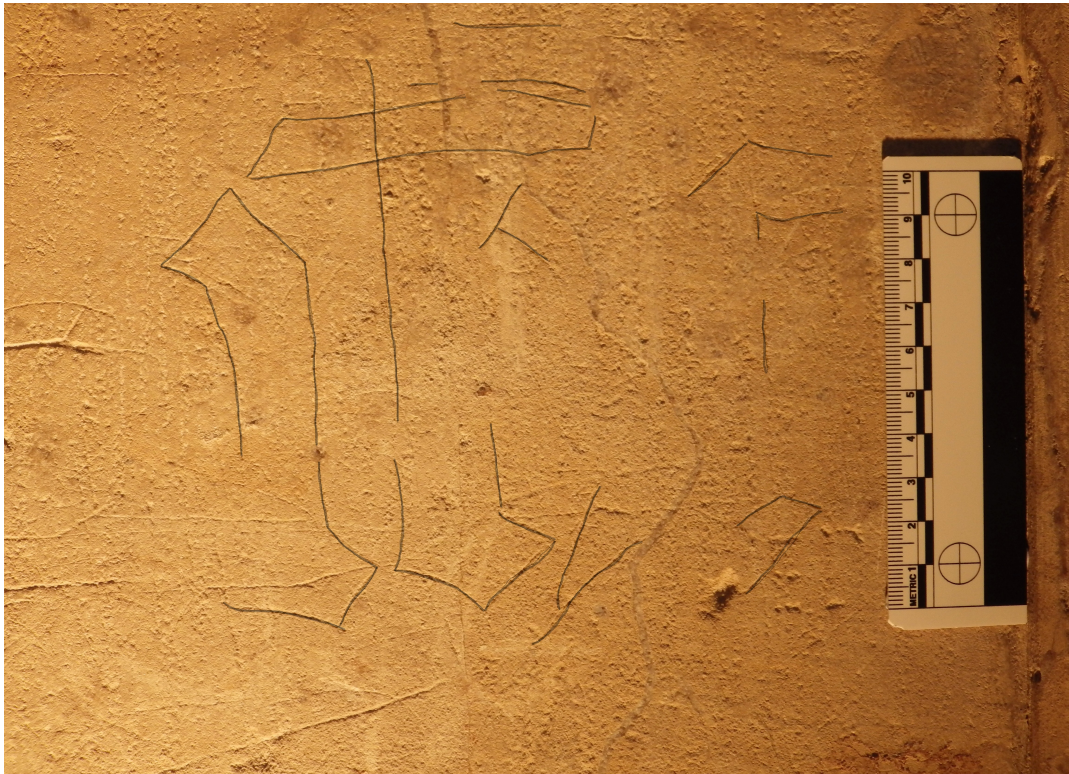
Database ID nos: 0326, 0560



Catalogue entry 43: Graffito of a sacred monogram on S44

Database ID no: 0482





Catalogue entry 43a: The superimposed outline of the graffito of the sacred monogram on S44

Database ID no: 0482



Catalogue entry 44: Graffito of a sacred monogram on S26

Database no: 0211





Catalogue entry 44a: The superimposed outline of the graffito of the sacred monogram on S26

Database ID no: 0211



Catalogue entry 45: Graffito of a sacred monogram on S16

Database ID no: 0402





Catalogue entry 45a: The superimposed outline of the graffito of the sacred monogram on S16

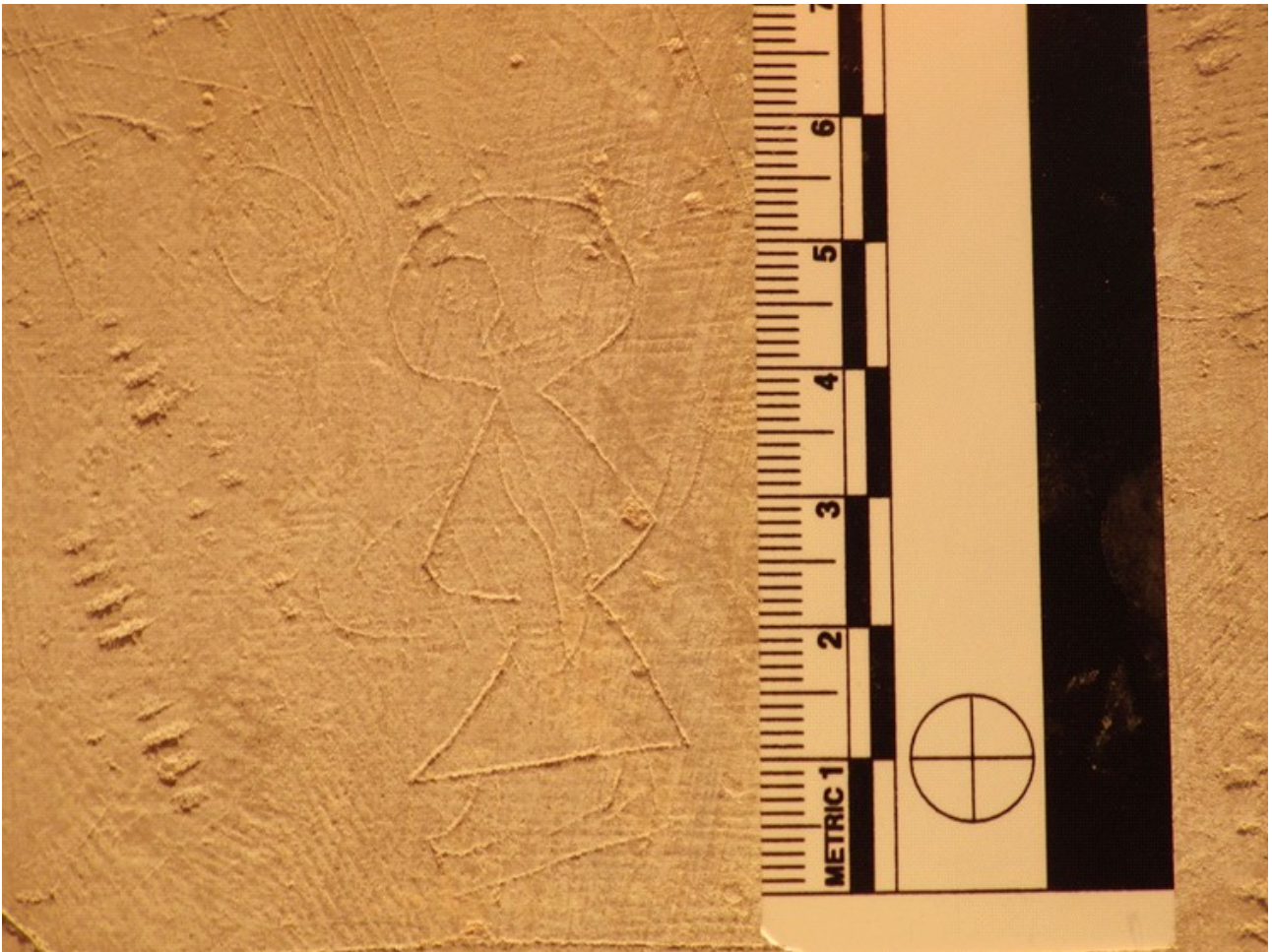
Database ID no: 0402



Catalogue entry 46: Graffito of a mitre on S45

Database ID no: 0295





Catalogue entry 47: Graffito of an angel on S02

Database ID no: 0109



Catalogue entry 48: Graffiti depicting two swords or daggers on S55 and S56

Database ID no: 0336, 0337





Catalogue entry 49: Graffito of a possible cog type ship on S59

Database ID no: 0131



Catalogue entry 49a: The superimposed outline of the graffito of the ship on S59

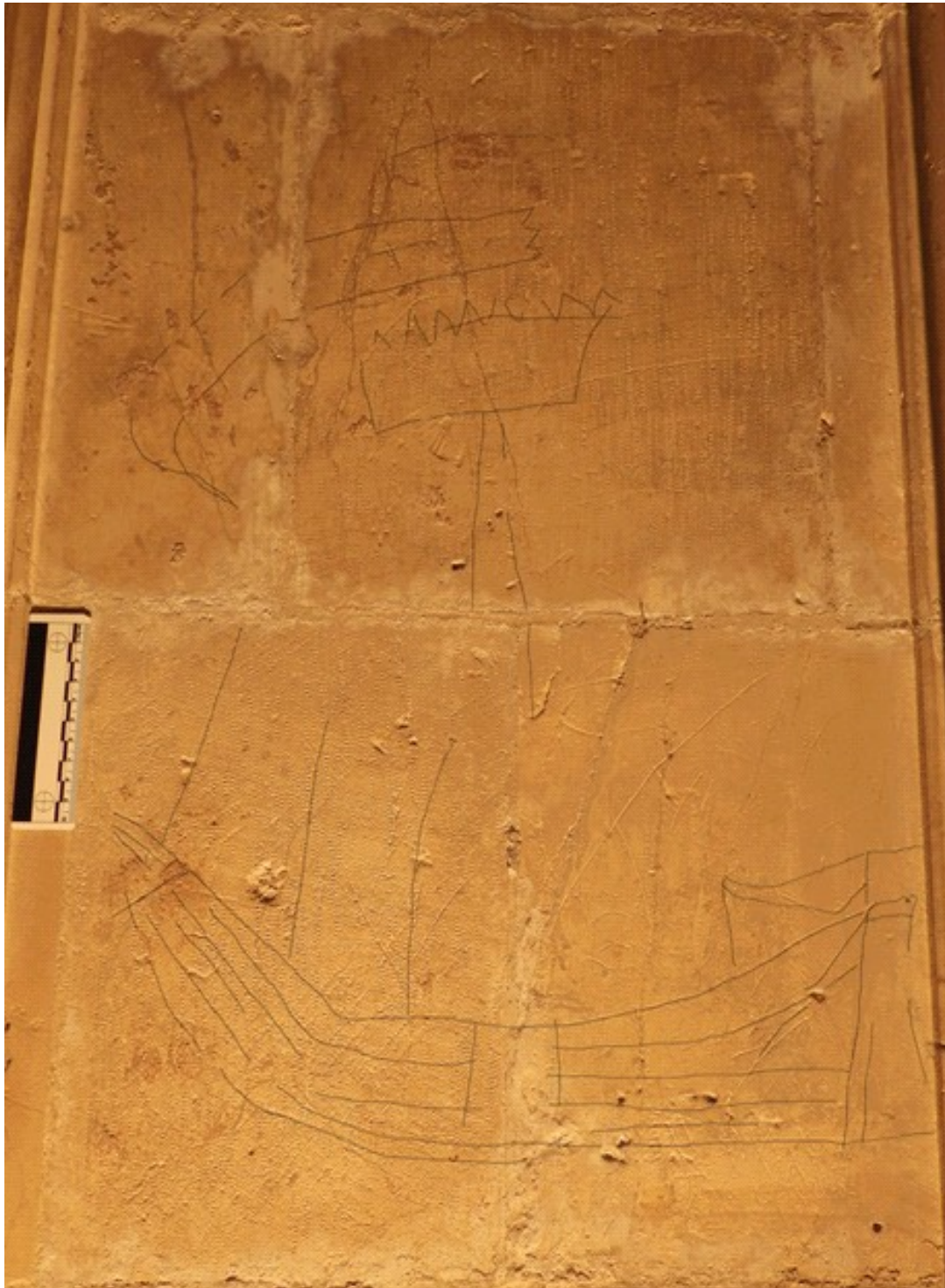
Database ID no: 0131





Catalogue entry 50: Graffito of a large possible cog type ship on S12 and S13

Database ID no: 0179



Catalogue entry 50a: The superimposed outline of the graffito of the large possible cog type ship on S12 and S13

Database ID no: 0179





Catalogue entry 51: Graffito of a possible cog type ship on S14 and S15

Database ID no: 0176



Catalogue entry 52: Graffito of a possible cog type ship on S49

Database ID no: 0325





Catalogue entry 53: Overview of a large ship graffito on S38 and S39

Database ID no: 0265



Catalogue entry 53a: The superimposed outline of the graffito of the large ship on S38 and S39

Database ID no: 0265





Catalogue 54: Graffito of a possible hulk ship on S18 to S19

Database ID no: 0161





Catalogue entry 54a: The superimposed outline of the graffito of a possible hulk vessel on S18 and S19

Database ID no: 0161





Catalogue entry 54b: The superimposed outline of two overlapping ship graffiti on S18 and S19

Database ID nos: 0161, 0162



Catalogue entry 55: Graffito depicting a possible barge on S17

Database ID no: 0168





Catalogue entry 55a: The superimposed outline of the graffito depicting a possible barge on S17

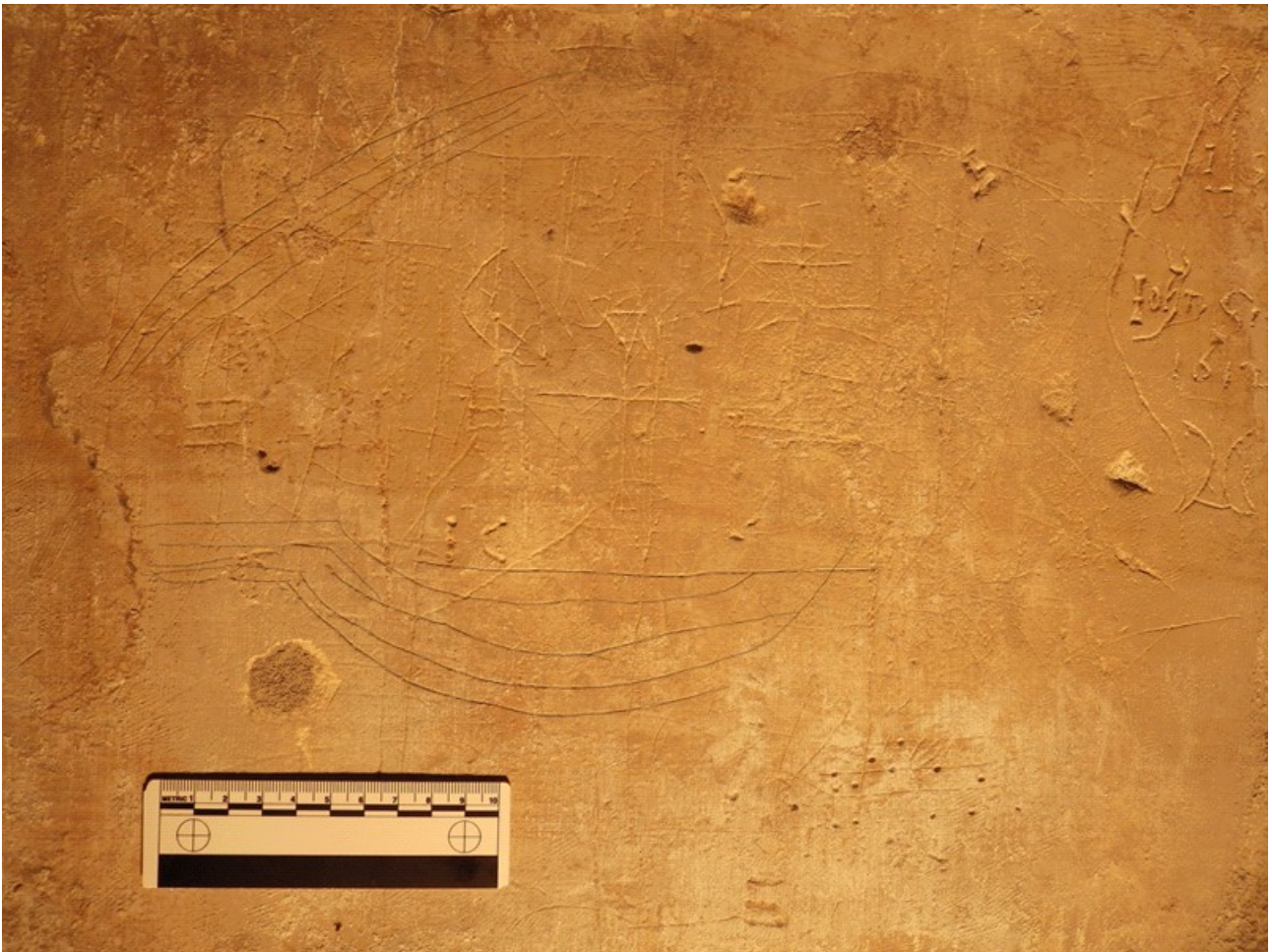
Database ID no: 0168



Catalogue entry 56: Graffito of a ship with a crescent-shaped hull on S21

Database ID no: 0151





Catalogue entry 56a: The superimposed outline of the graffito of the ship with a crescent-shaped hull on S21

Database ID no: 0151



Catalogue entry 57: Graffito of a stave of musical notation, comprising part of a polyphonic piece on S02

Database ID no: 0107





Catalogue entry 58: Graffito of a stave of musical notation, comprising part of a polyphonic piece on S57

Database ID no: 0342



Catalogue entry 58a: The superimposed outline of the graffito depicting the stave of musical notation on S57

Database ID no: 0342





Catalogue entry 59: Overview of a graffito depicting a large stave of musical notation on S15

Database ID no: 0172



Catalogue entry 59a: The superimposed outline of the graffiti on S15 depicting musical notation, letters and textual inscriptions

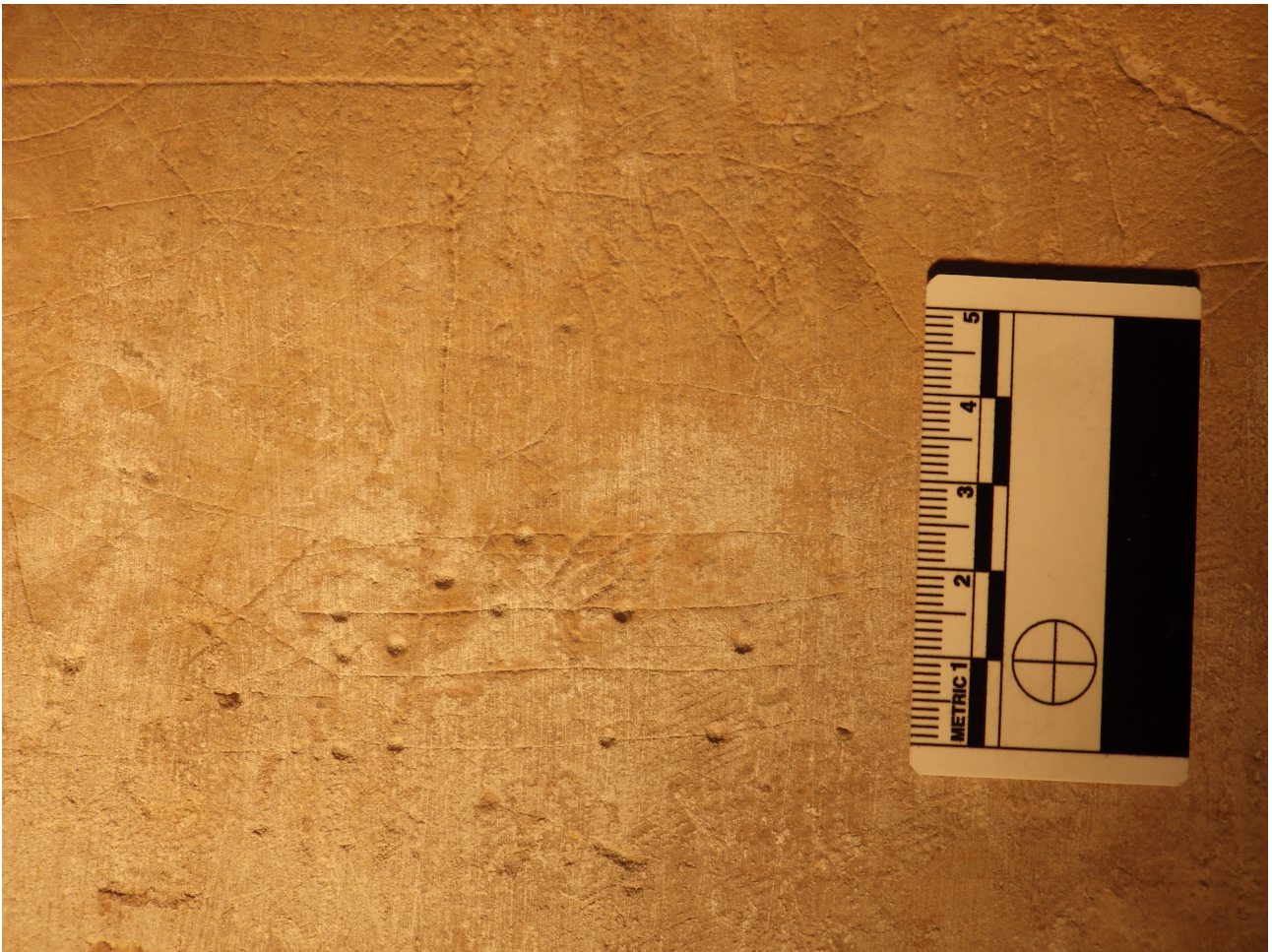
Database ID no: 0172





Catalogue entry 60: Graffito possibly depicting a ligature above a stave of musical notation on S57

Database ID no: 0343



Catalogue entry 61: Graffito of a possible four-lined stave of musical notation on S21

Database ID no: 0152

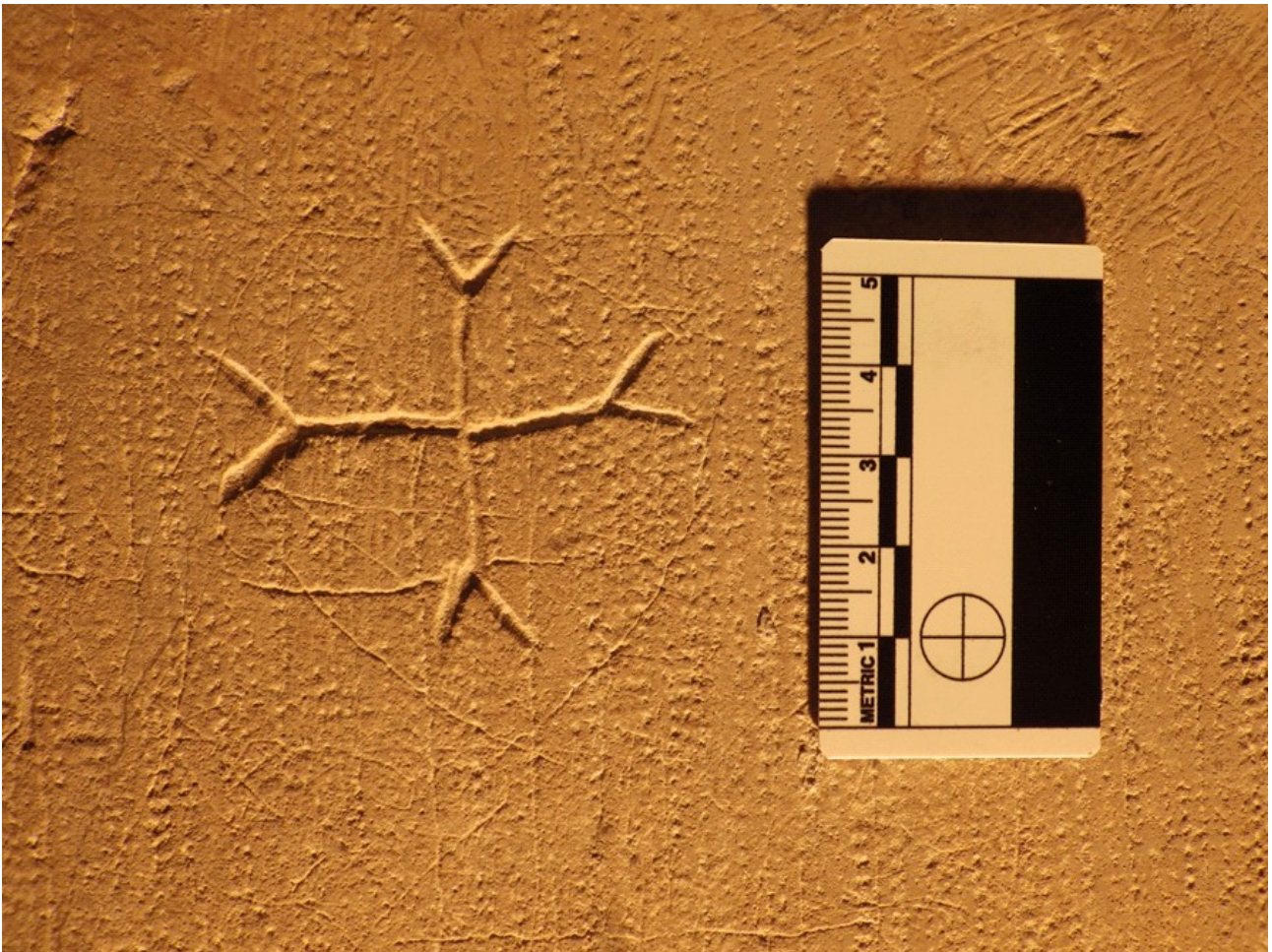




Catalogue entry 62: Graffito of an heraldic device depicting a Fourché cross on S34

Database ID no: 0235

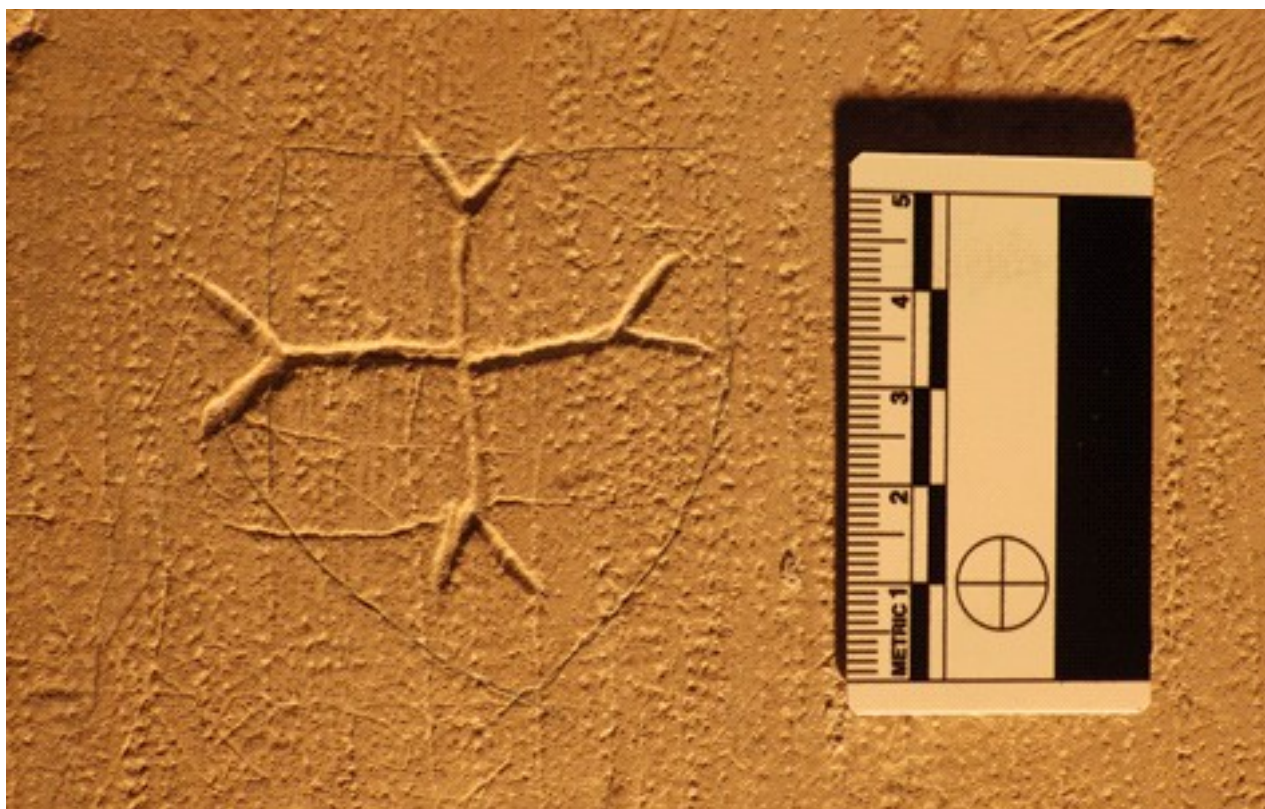




Catalogue entry 63: Graffito of a Fourché cross framed by a faintly-incised shield on S26

Database ID no: 0215





Catalogue entry 63a: The superimposed outline of the faintly-incised shield encompassing a Fourché cross on S26

Database ID no: 0215



Catalogue entry 64: Graffito of a possible pseudo-heraldic shield on S19

Database ID no: 0158





Catalogue entry 64a: The superimposed outline of the possible pseudo-heraldic shield on S19

Database ID no: 0158



Catalogue entry 65: Graffito of a banner on S56

Database ID no: 0126





Catalogue entry 66: Graffito of a ragged staff possibly depicted upside-down on S12

Database ID no: 0180





Catalogue entry 67: Graffito of a ragged staff on S22

Database ID no: 0149





Catalogue entry 67a: The superimposed outline of the graffito of the ragged staff on S22

Database ID no: 0149



Catalogue entry 68: Graffito of a figure depicted in an attitude of prayer on S43

Database ID no: 0307





Catalogue entry 68a: The superimposed outline of the graffito of a figure depicted in an attitude of prayer on S43

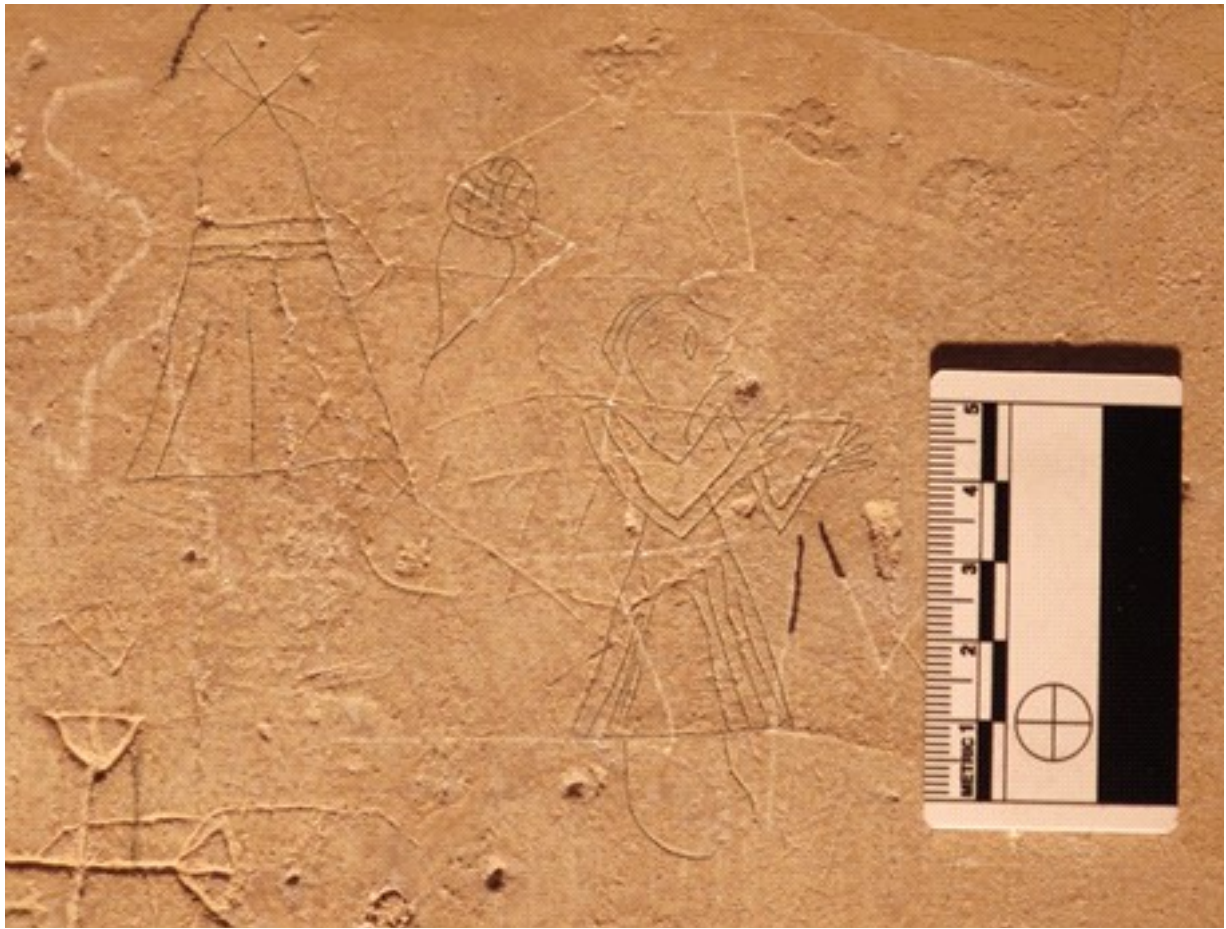
Database ID no: 0307



Catalogue entry 69: Graffiti of two full-length figures on S56

Database ID nos: 0127, 0128





Catalogue entry 69a: The superimposed outline of the two full-length figures and a possible acorn on S56

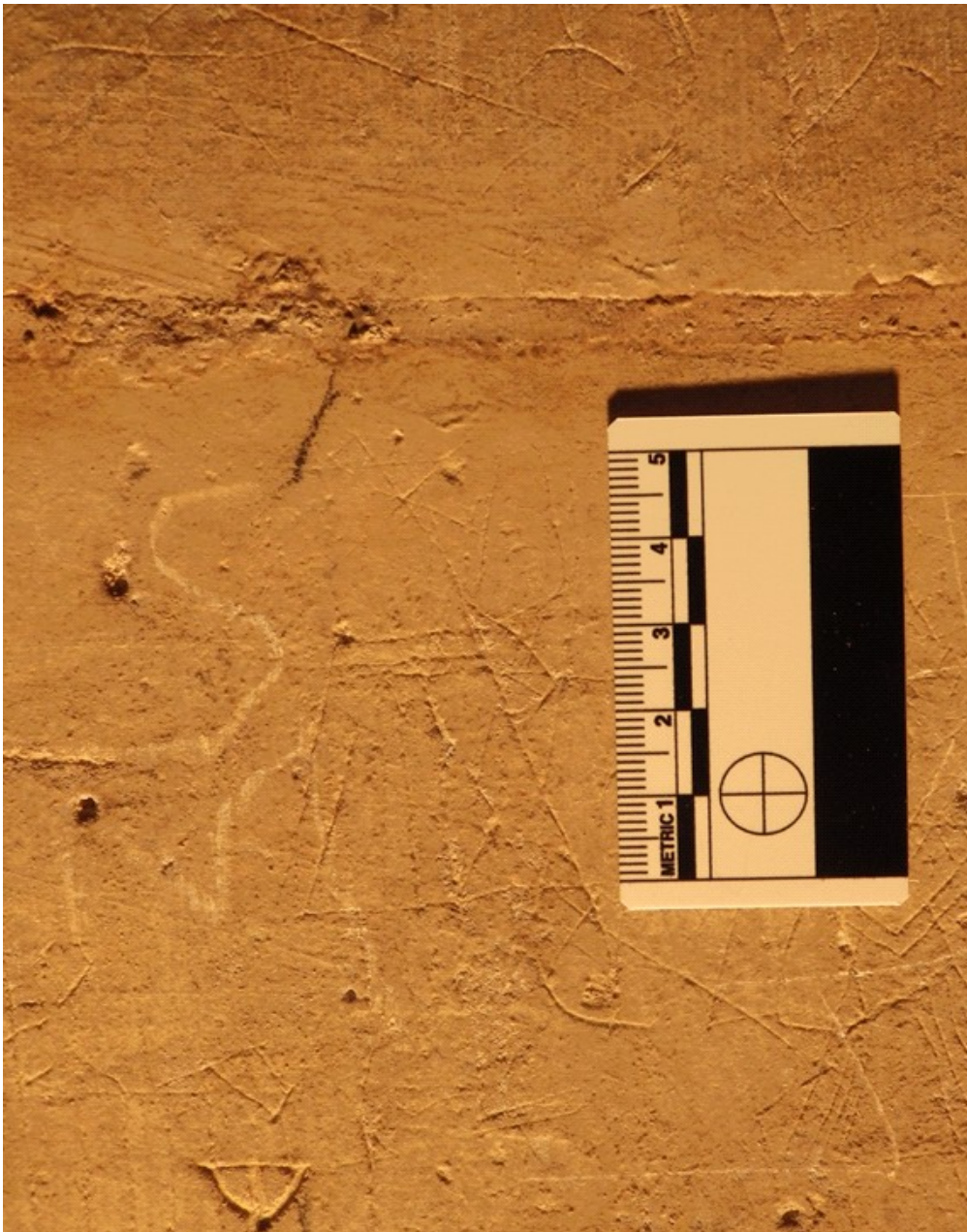
Database ID nos: 0123, 0127, 0128



Catalogue entry 70: Graffito of a full-length figure depicted in profile on S56

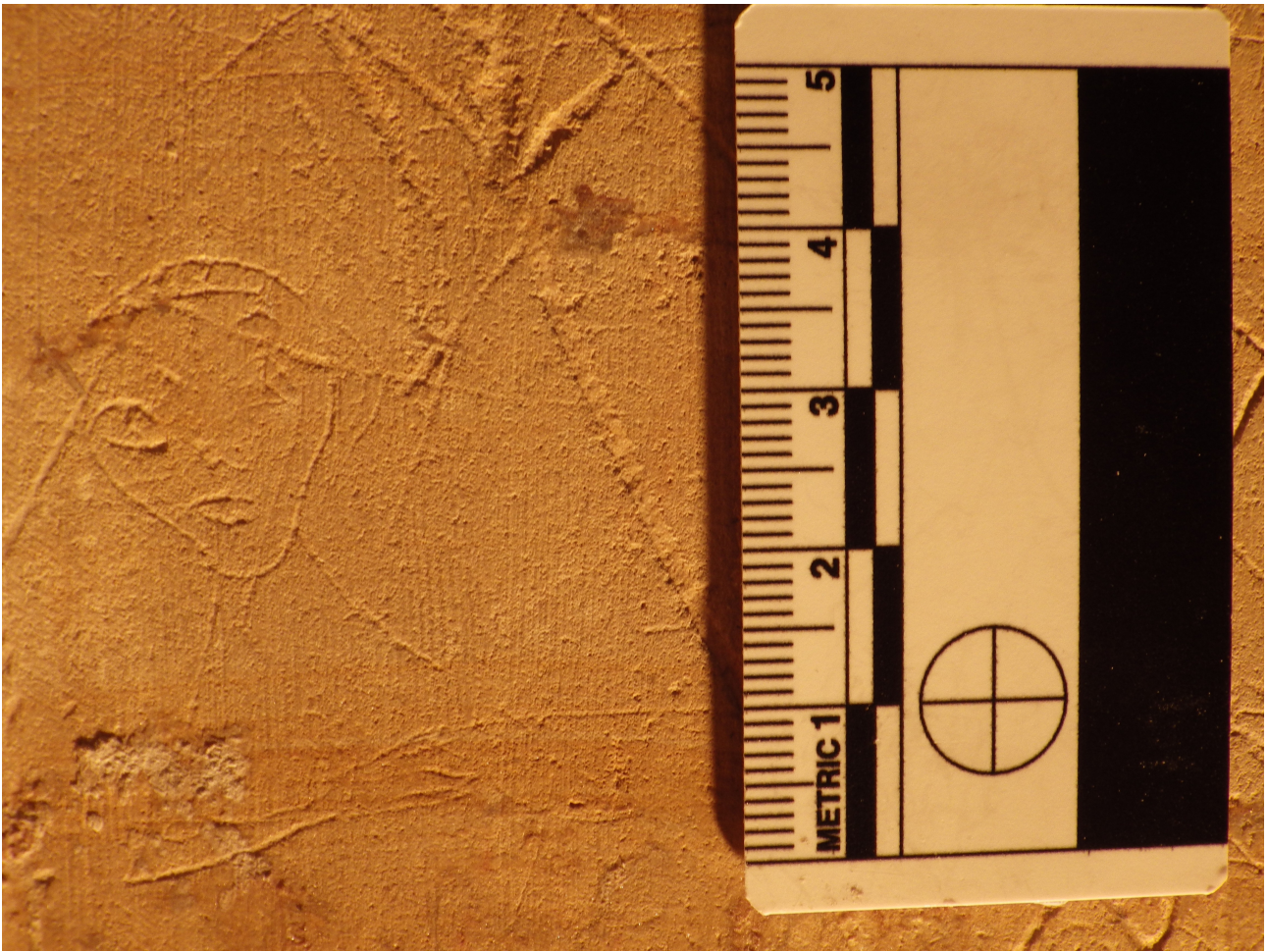
Database ID no: 0127





Catalogue entry 71: Graffito of a figure missing a head on S56

Database ID no: 0128



Catalogue entry 72: Graffito of a portrait showing an arm folded across on S38

Database ID no: 0268

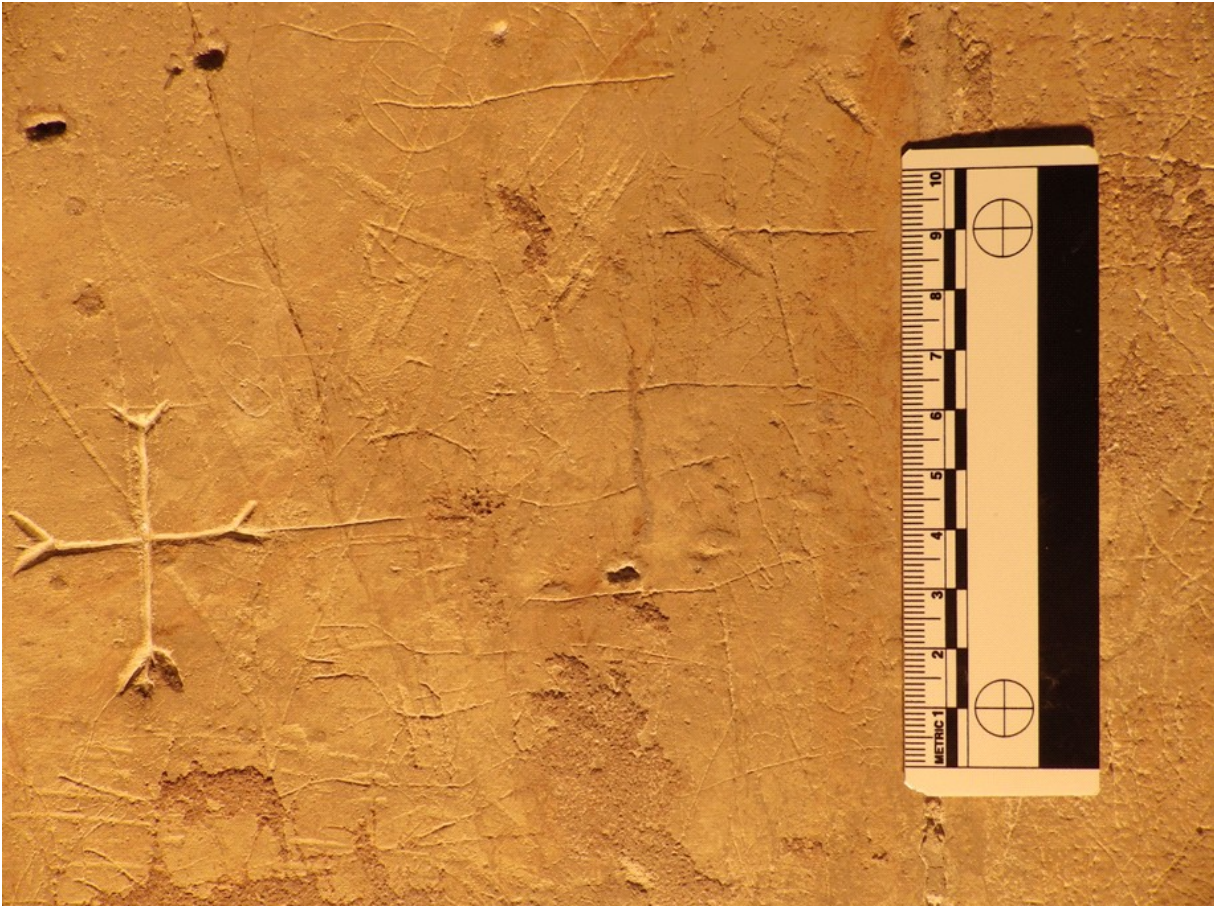




Catalogue entry 73: Graffito of a face depicted in profile, wearing a head-dress on S38

Database ID no: 0269





Catalogue entry 74: Graffiti depicting two possible Agnus Dei motifs on S22

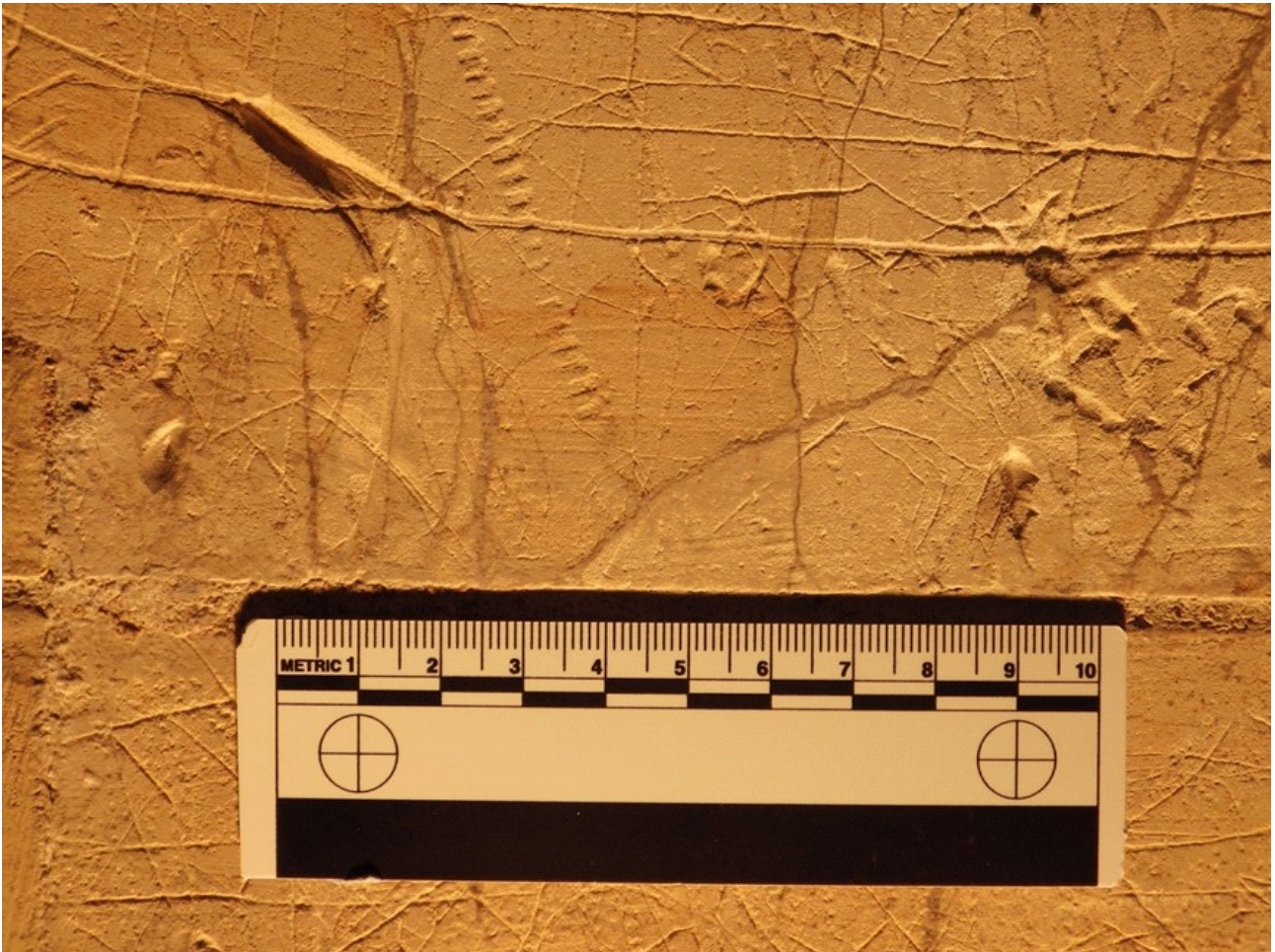
Database ID nos: 0190, 0191





Catalogue entry 74a: The superimposed outline of the graffiti of the two possible Agnus Dei motifs on S22

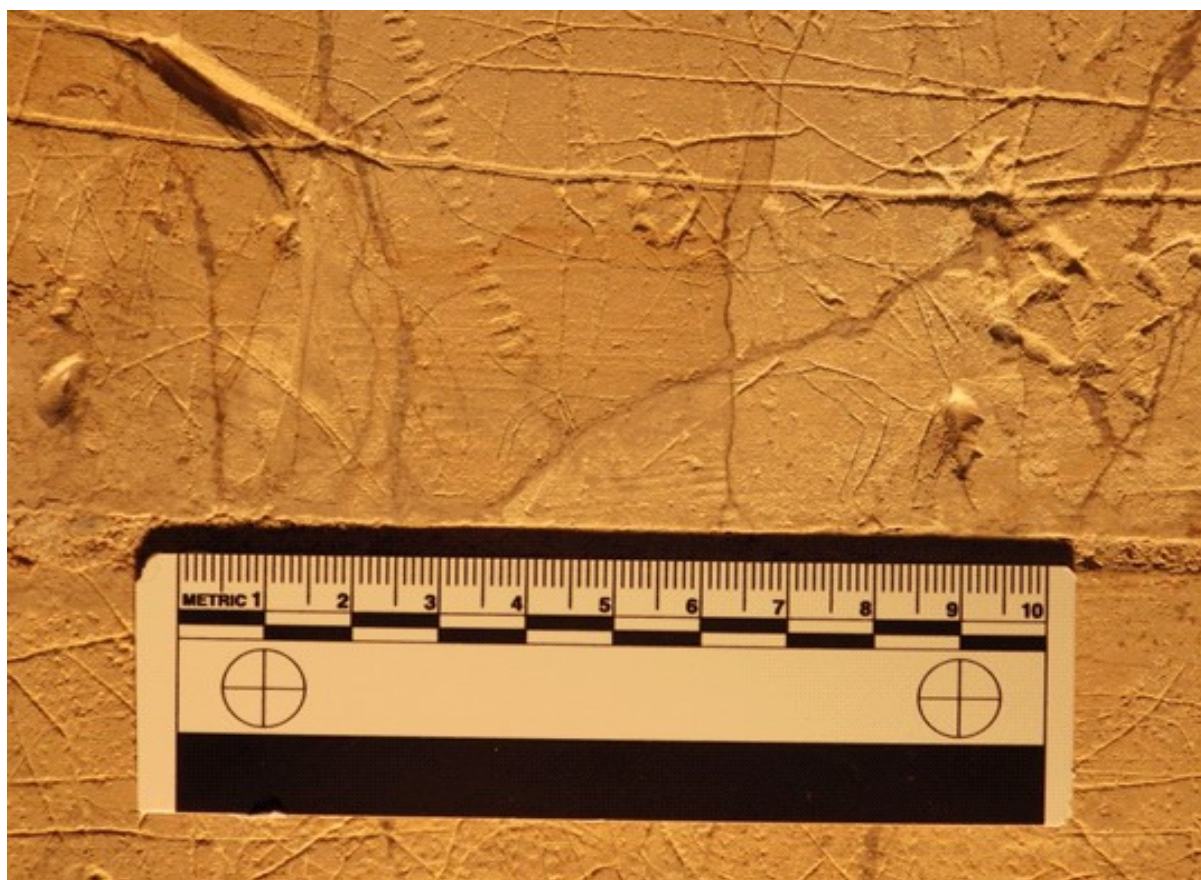
Database ID nos: 0190, 0191



Catalogue entry 75: Graffito of a possible horse beneath the hull of a ship on S38

Database ID no: 0266





Catalogue entry 75a: The superimposed outline of the graffito of the possible horse on S38

Database ID no: 0266



Catalogue entry 76: Graffito of a merchant's mark depicted with a heraldic shield on S53

Database ID no: 0134





Catalogue entry 77: Graffito of a merchant's mark on S45

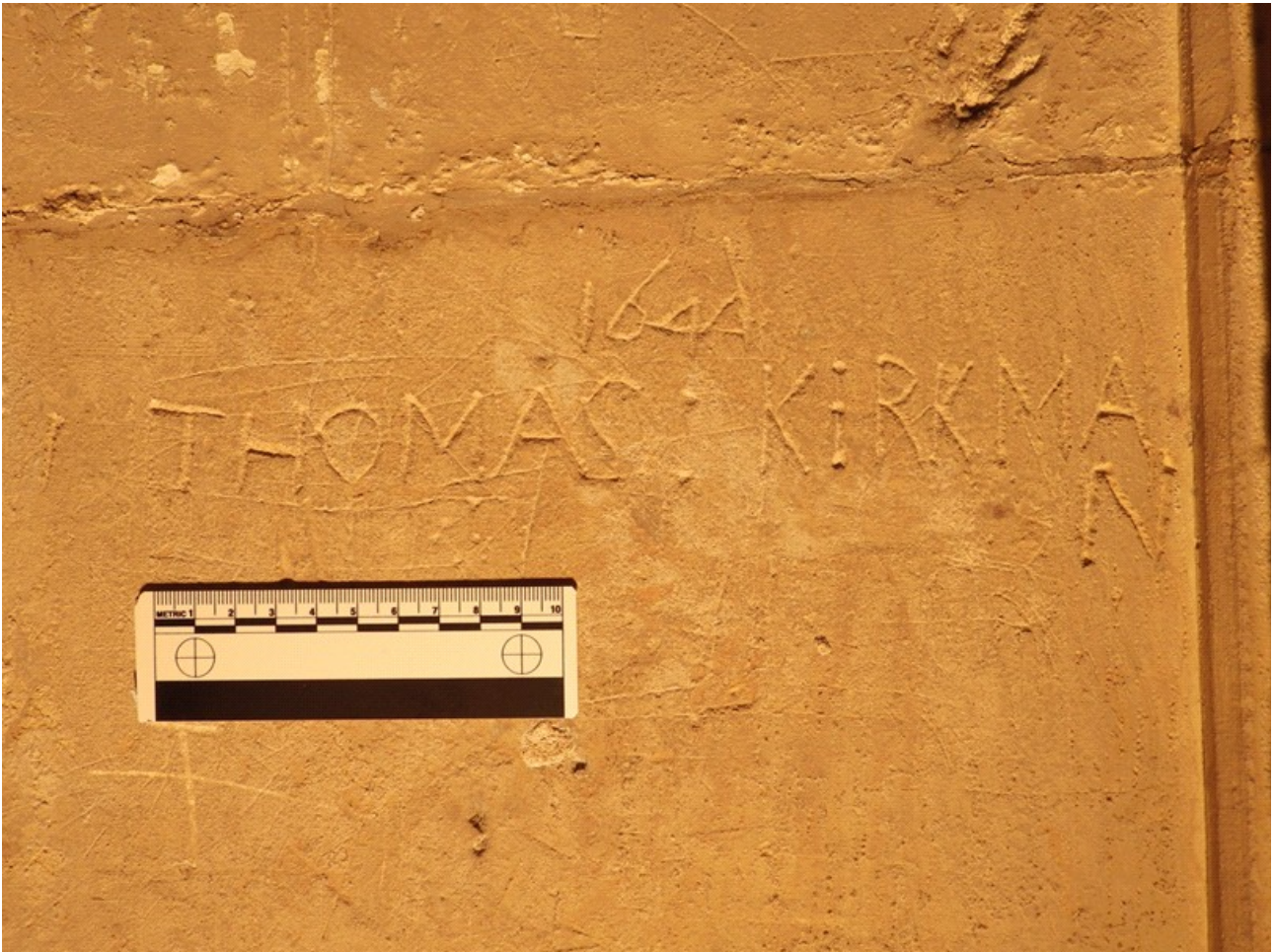
Database ID no: 0294



Catalogue entry 78: Graffito depicting the name 'John Shorts 1612' framed by an elaborate design on S21

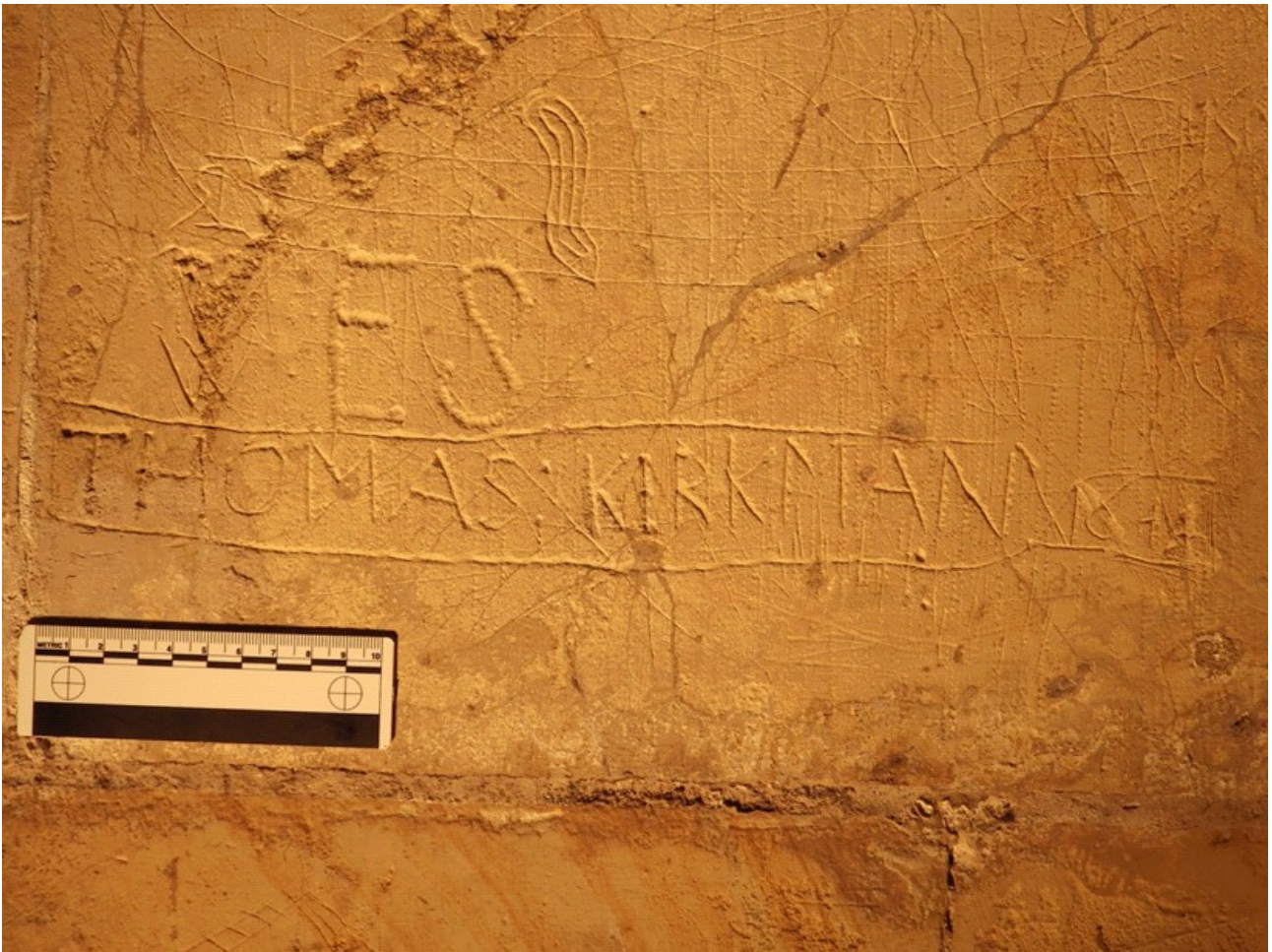
Database ID no: 0150





Catalogue entry 79: Graffito of the name 'Thomas Kirkman 1644' on S55

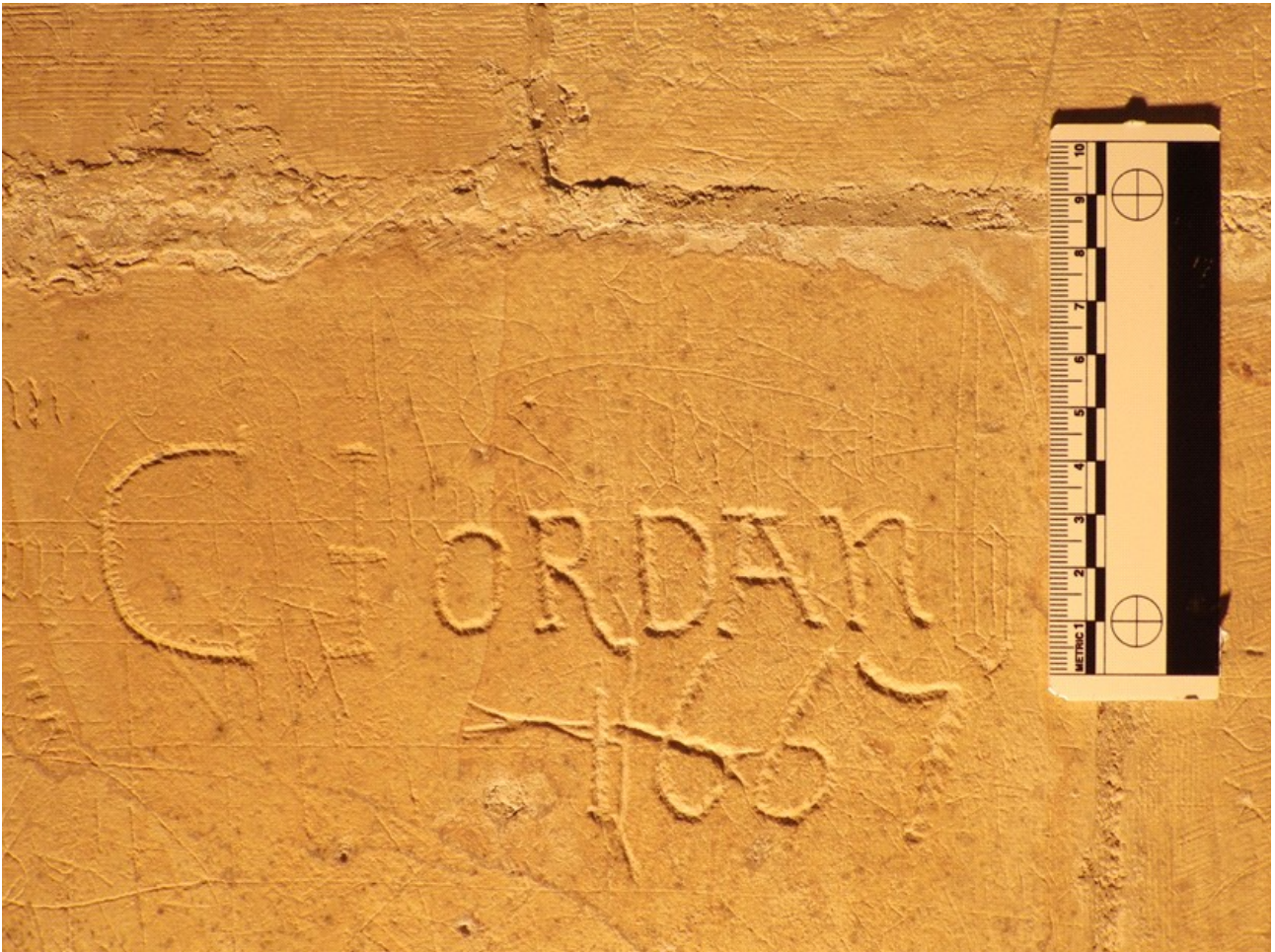
Database ID no: 0136



Catalogue entry 80: Graffiti depicting the name 'Thomas : Kirkman 1644' and the initial 'ES' on S18

Database ID no: 0164





Catalogue entry 81: Graffito of the name 'C Jordan 1667' on S15

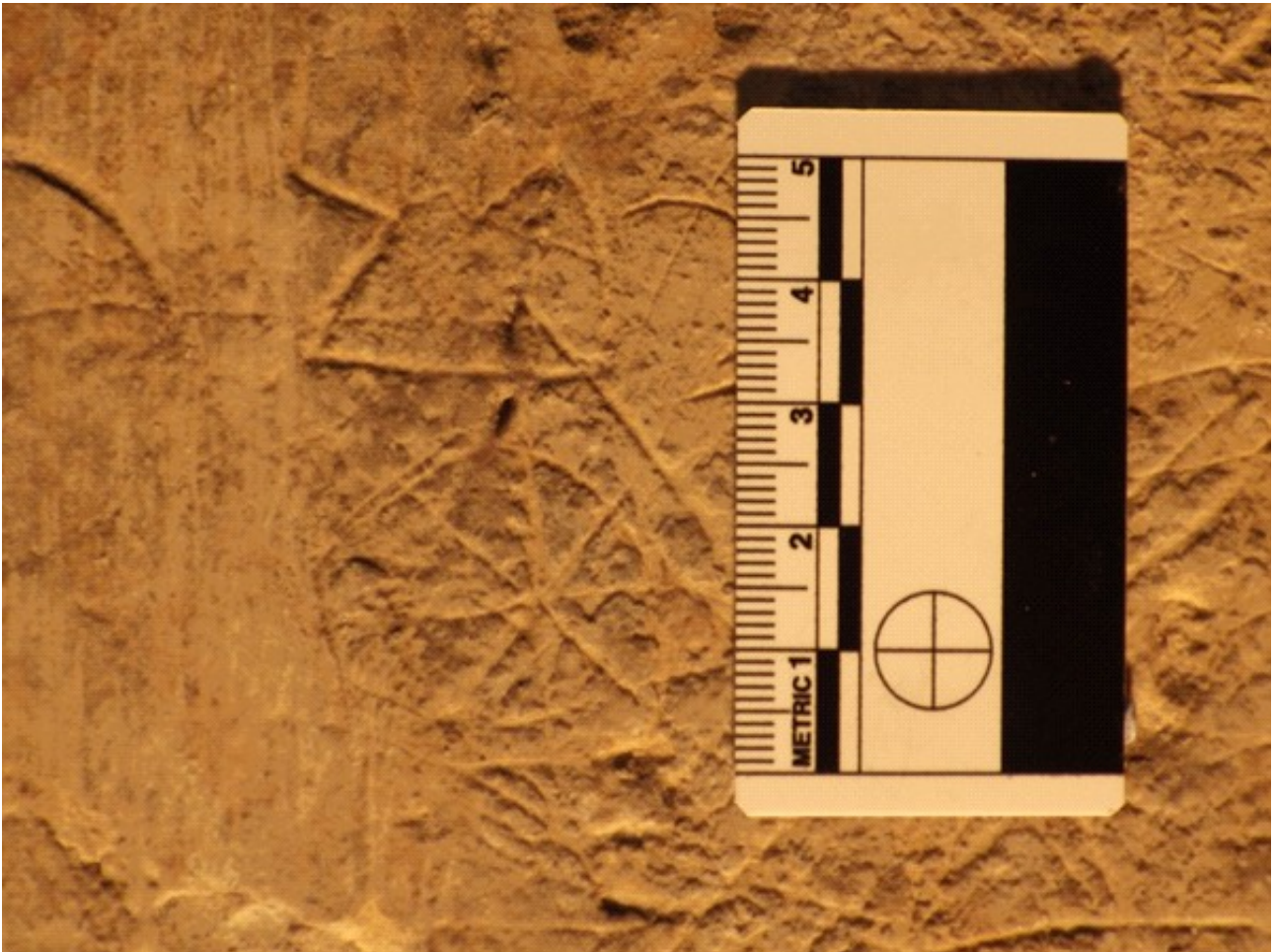
Database ID no: 0171



Catalogue entry 82: Graffito of a possible acorn on S56

Database ID no: 0123





Catalogue entry 83: Graffito of a possible wagon wheel on S34

Database ID no: 0233



Catalogue entry 84: Graffito of a box divided into smaller boxes on S22

Database ID no: 0117

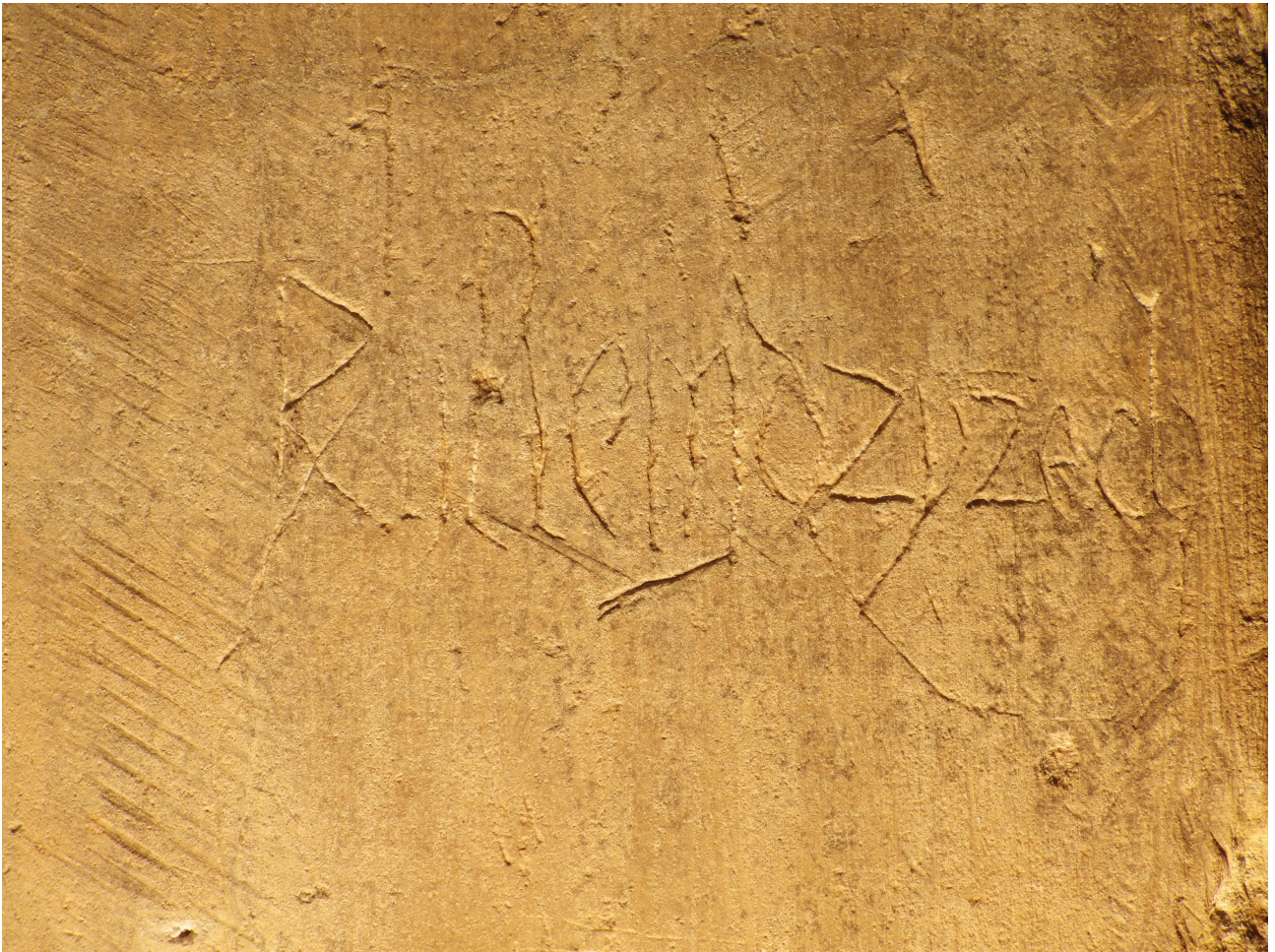




Catalogue entry 85: Graffito of a textual inscription reading 'maburn' on N8

Database ID no: 0475





Catalogue entry 86: Graffito of a foreign textual inscription on N8

Database ID no: 0339





Catalogue entry 87: Graffiti depicting various crosses of a similar style on N5

Database ID no: 0296, 0297, 0298, 0299



Catalogue entry 88: Graffito of a cross on N6

Database ID no: 0483





Catalogue entry 89: Graffito of a pseudo-heraldic device on N8

Database ID no: 0477





Catalogue entry 90: Graffito of an interlaced design located in the west end near the door leading to the north-west tower

Database ID no: 0496





Catalogue 91: Graffito of a ragged staff with crosses incised in the centre on S4

Database ID no: 0288



Catalogue entry 92: Graffito of a stave of musical notation with a clef and four notes on N2

Database ID no: 0295





Catalogue entry 93: The notes and clef on the stave of musical notation on N2

Database ID no: 0295



Catalogue entry 94: Graffito of a four-lined stave of musical notation located in the bay between piers N2 and N3

Database ID no: 0286





Catalogue entry 95: Graffito of a large figure on N2

Database ID no: 0480





Catalogue entry 95a: The superimposed outline of the large figure graffito on N2

Database ID no: 0480





Catalogue entry 96: Graffito of a profile of a face on N5

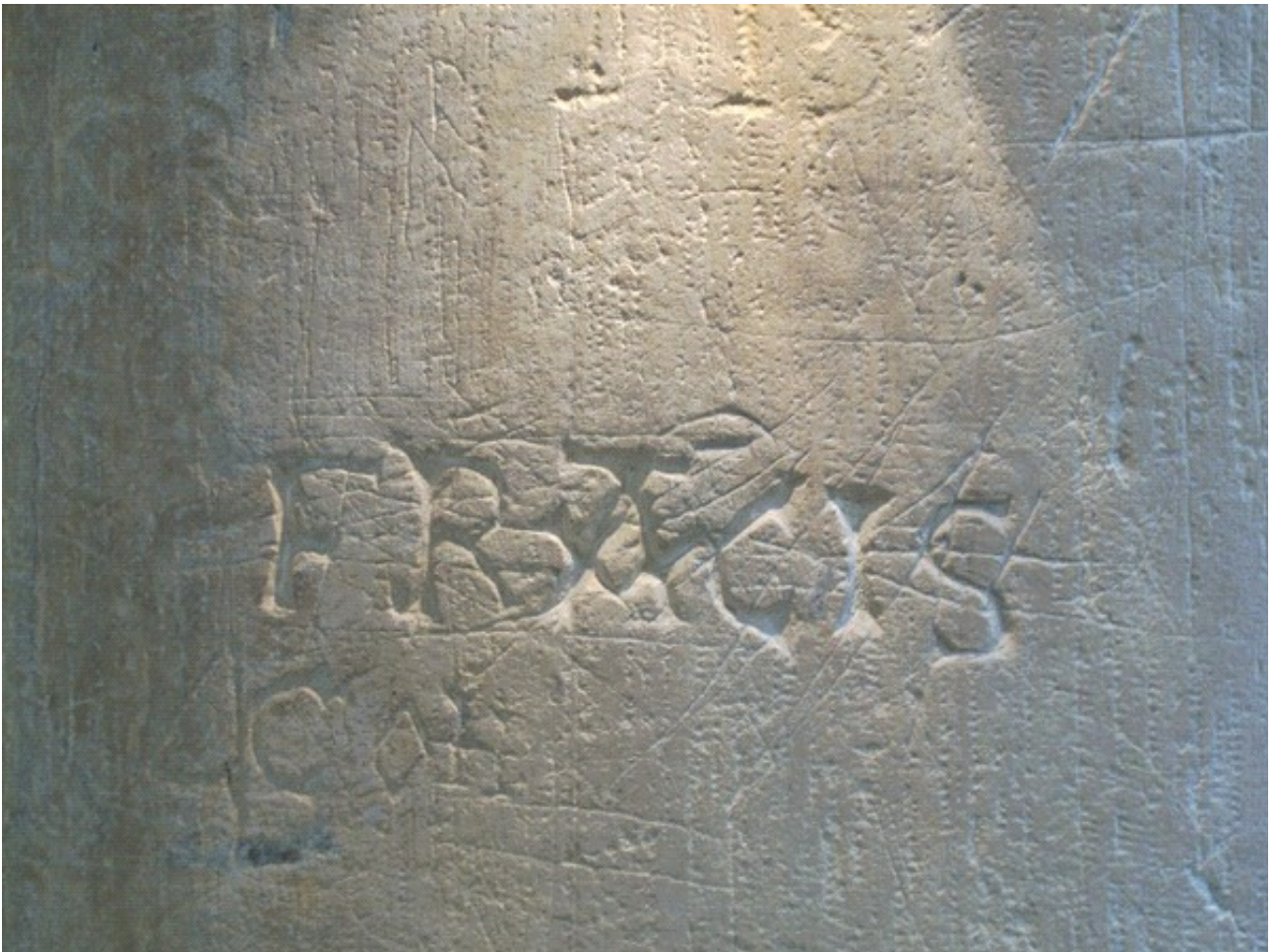
Database ID no: 0281



Catalogue entry 97: Graffiti possibly depicting two interlinked alpha and omega symbols on N6

Database ID no: 0482, 0301





Catalogue entry 98: Graffito of the name 'Francis' in abbreviated Latin spelt 'FRACIS' on N3

Database ID no: 0130



Catalogue entry 99: Graffito of the name 'Robert Cvttis 1622' on N9, possibly for 'Cutts'

Database ID no: 0663





Catalogue entry 100: Graffito of the name 'Thomas Ashlet 1613' on S8

Database ID no: 1117



Catalogue entry 101: Graffito of a ship located on a pier on the north side of the nave

Database ID no: 0559





Catalogue entry 101a: The superimposed outline of the graffito of a ship on a pier  
on the north side of the nave

Database ID no: 0559



Catalogue entry 102: Graffito of a small ship located on a pier on the north side of the nave

Database ID no: 0556





Catalogue entry 102a: The superimposed outline of the graffito of the small ship located on a pier on the north side of the nave

Database ID no: 0556



Catalogue entry 103: Graffito of a ship as it appears without using a light source located on a pier on the north side of the nave

Database ID no: 0540





Catalogue entry 103a: Graffito of a ship located on a pier on the north side of the nave,  
with lighting equipment

Database ID no: 0540



Catalogue entry 104: Graffito of a possible cog type ship located on a pier on the north side of the nave

Database ID no: 0570





Catalogue entry 105: Graffito depicting the hull of a ship without rigging located on a pier on the north side of the nave

Database ID no: 0705



Catalogue entry 106: Graffito of a merchant's mark located on a pier on the north side of the nave

Database ID no: 0558





Catalogue entry 107: Graffito of a small possible Consecration cross located on the south side of the chancel

Database ID no: 0578



Catalogue entry 108: Graffiti depicting a series of concentric compass-drawn circles within circles located on a pier on the north side of the nave

Database ID nos: 0703, 0704





Catalogue entry 109: Graffito of a ship located on a pier close to the west end

Database ID no: 0724



Catalogue entry 110: Graffito of a ship showing the detail of the shrouds, yards, crow's nest and planking, situated at a low height on the westernmost pier on the north side of the nave

Database ID no: 0086





Catalogue entry 111: Graffito of a ship showing the detail of its hull and rigging, above the door frame leading to the central power

Database ID no: 0066



Catalogue entry 112: Graffito of a textual inscription located on a pier on the north side of the nave towards the west end

Database ID no: 0727





Catalogue entry 113: Graffito of a stave of musical notation with diamonds and square shapes representing notes, situated above standing eye level near the doorway leading to the central tower

Database ID no: 0070



Catalogue entry 114: Graffito possibly depicting a four-lined stave of musical notation consisting of lines and dots, situated at a low height facing east near the door jamb leading to the central tower

Database ID no: 0065





Catalogue entry 115: Graffito possibly representing a stave of musical notation consisting of lines and dots, located in the west end near the door leading to the tower

Database ID no: 0063



Catalogue entry 116: Graffito of a compass-drawn design of a six-petalled daisywheel, located above the door frame leading to the central tower

Database ID no: 0064





Catalogue entry 117: Graffito of a compass-drawn design consisting of a six-petalled daisywheel, located in the west end near the doorway to the tower

Database ID no: 0073



Catalogue entry 118: A faintly-incised graffito of a face located in the west end near the doorway leading to the tower

Database ID no: 0074





Catalogue entry 118a: The superimposed outline of the graffito of the face located in the west end near the doorway leading to the tower

Database ID no: 0074



Catalogue entry 119: Graffito of a merchant's mark on the westernmost pier on the north side of the nave

Database ID no: 0081





Catalogue entry 120: Graffito of a shield located on the westernmost pier near the doorway  
leading to the tower

Database ID no: 0077



Catalogue entry 121: Graffito of a time keeping device located in the west end

Database ID no: 0087



**Saint Nicholas's, Hornsea**



Catalogue entry 122: Graffito of a ragged staff located on the westernmost pier on the south side of the nave

Database ID no: 0518



Catalogue entry 123: Graffito depicting a possible angel with compass-drawn circular wings, situated at a low height on a pier on the north side of the nave

Database ID no: 0516





Catalogue entry 124: Graffiti of two merchants' marks located on a pier on the south side of the nave

Database ID no: 0991, 0845



Catalogue entry 125: Graffiti of two W letters consisting of a double V located on a pier on the south side of the nave

Database ID nos: 0620, 0621





Catalogue entry 126: Graffito of a compass-drawn design depicting a faintly-incised daisywheel, located on a pier on the south side of the nave

Database ID no: 0622



Catalogue entry 127: Graffito of a face depicted in profile located on a pier on the south side of the nave

Database ID no: 0582





Catalogue entry 128: Graffito of a possible bird located on the westernmost pier on the south side of the nave

Database ID no: 0581

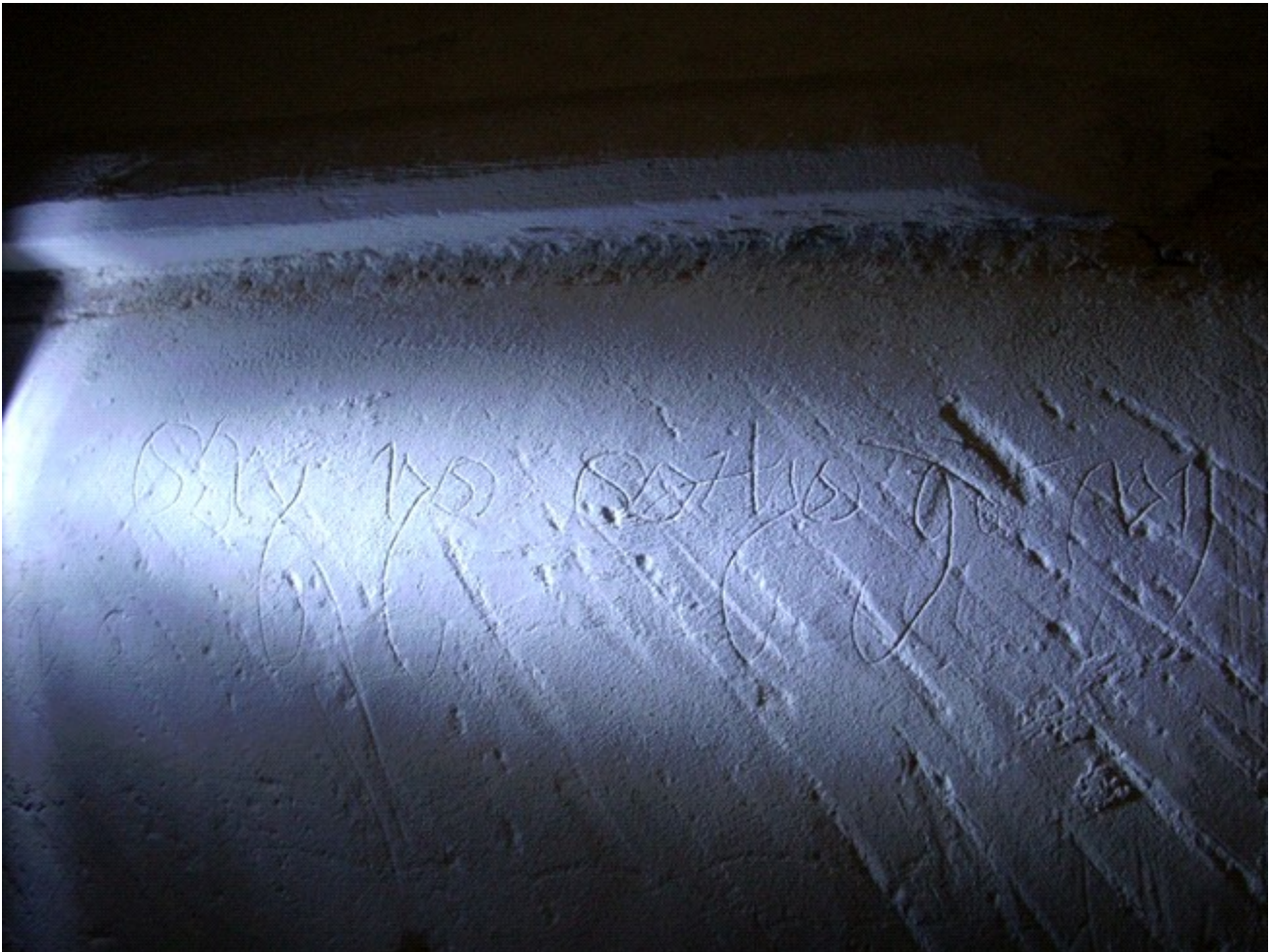
**Saint John of Beverley, Harpham**



Catalogue entry 129: Graffiti of two sacred monograms located on the east side of the west arch

Database ID no: 0623, 0624





Catalogue entry 130: Graffito of a textual inscription located on the west side of the chancel arch

Database ID no: 0510



Catalogue entry 131: Graffito of a textual inscription located on the west side of the chancel arch

Database ID no: 0509





Catalogue entry 132: Graffito possibly depicting a hulk type ship located on the north side of the west tower arch facing towards the nave

Database ID no: 0508



Catalogue entry 133: Graffito of a portrait, possibly a caricature wearing an elaborately decorated hat located on the east side of the west arch

Database ID nos: 0505, 1207





Catalogue entry 134: Graffiti depicting two birds located on the west arch of the tower

Database ID no: 0506



Catalogue entry 135: Graffito of a mitred head located on a pier on the north side of the nave

Database ID no: 0501





Catalogue entry 136: Graffito of a shield located on a pier on the south side of the nave

Database ID no: 0503



Catalogue entry 137: Graffito of a textual inscription located on the door jamb on south-west entrance

Database ID no: 0626





Catalogue entry 138: Graffito of a possible hulk type ship located on a pier on the north side of the nave

Database ID no: 0500

**All Saints, Goxhill**



Catalogue entry 139: Graffito of a face wearing a hat located on a pier on the north side of the nave

Database ID no: 0607





Catalogue entry 140: Graffiti of two faces depicted wearing hats located on a pier on the north side of the nave

Database ID no: 0605, 0606





Catalogue entry 141: Graffito of a face depicted wearing a hat located on a pier on the north side of the nave

Database ID no: 0530





Catalogue entry 142: Graffito of a portrait of a woman wearing a hat located on a pier on the north side of the nave

Database ID no: 0533



Catalogue entry 143: Graffito of a portrait of a woman wearing a hat located on a pier on the north side of the nave

Database ID no: 0534





Catalogue entry 144: Graffito of a figure in armour wielding a sword located on the westernmost pier on the south side of the nave

Database ID no: 0529



Catalogue entry 145: Graffito of a full-length figure located on a pier on the south side of the nave

Database ID no: 0537





Catalogue entry 145a: The superimposed outline of the graffito of the full-length figure on a pier on the south side of the nave

Database ID no: 0537



Catalogue entry 146: Graffiti of two figures situated at a low height on the east side of the chancel arch

Database ID no: 0535





Catalogue entry 147: Graffito depicting a horse being ridden by a figure located on the easternmost pier on the north side of the nave

Database ID no: 0536



Catalogue entry 148: Graffito of a faintly-incised ship located on a pier on the north side of the nave

Database ID no: 0531





Catalogue entry 148a: The superimposed outline of the graffito of the faintly-incised ship, located on a pier on the north side of the nave

Database ID no: 0531



Catalogue entry 149: Graffito of a compass-drawn design located on a pier on the north side of the nave

Database ID no: 0532





Catalogue entry 150: Graffito of a possible Consecration cross located on a pier on the north side of the nave

Database ID no: 0610



Catalogue entry 151: An early modern graffito depicting the name 'George Roberts' located in the west end

Database ID no: 0539